

PUDA 整體浴室
極致工藝 呈現頂級感受



THE BEST
UNIT-BATHROOM



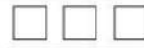
■ 整體浴室型式表.....	03
■ 系統優勢.....	07
■ 結構特性.....	09
■ 設計機能.....	11
■ 產品型式.....	15
■ 設計施工.....	75

型式表

1 6 2 4
短邊內尺寸 長邊內尺寸



W-全磁磚壁
K-磁磚+SMC壁
R-全SMC壁



T-馬桶 B-浴缸 U-小便斗
S-淋浴龍頭 L-底盤缺角
H-臉盆龍頭+蓮蓬頭

商品系列
編碼原則

門開方向	短邊-右	短邊-左	長邊-右	長邊-左	中間-右	中間-左
2030WTSB P.15					2030 WU 6244 	2030 WU 6134
1837WTSB P.17					1837 WU A234 	1837 WU A144
1635WTSB P.17					1635 WU 4234 	1635 WU 4144
1632WTSB P.19	1632 WU 3264 	1632 WU 3114 	1632 WU 3254 	1632 WU 3124 	1632 WU 3244 	1632 WU 3134
1632WTSBL P.19	1632 WU 3464 	1632 WU 3314 	1632 WU 3454 	1632 WU 3324 	1632 WU 3444 	1632 WU 3334
1624WTSB P.21					1624 WU BR34 	1624 WU BQ44
1624KTSB P.23	1624 ZK B666 	1624 ZK B516 	1624 ZK B656 	1624 ZK B526 		
1624 ^{KTS} _{WTS} P.25	1624 ZK B466 	1624 ZK B316 	1624 ZK B456 	1624 ZK B326 	1624 ZK B446 	1624 ZK B336
1624 ^{KTSL} _{WTSL} P.27	1624 ZK B866 	1624 ZK B716 	1624 ZK B856 	1624 ZK B726 	1624 ZK B846 	1624 ZK B736
1620KTSB P.29	1620 ZK A466 	1620 ZK A316 	1620 ZK A456 	1620 ZK A326 		
1616 ^{KTS} _{WTS} P.31	1616 ZK 9226 	1616 ZK 9156 				
1529WTSB P.33	1529 WU 2264 	1529 WU 2114 			1529 WU 2244 	1529 WU 2134

型式表

門開方向	短邊-右	短邊-左	長邊-右	長邊-左	中間-右	中間-左
1529WTSBL P.33	1529 WU 2464 	1529 WU 2314 			1529 WU 2444 	1529 WU 2334
1521ATT P.35	1521 KN 8H64 	1521 KN 8G14 	1521 KN 8H54 	1521 KN 8G24 		
1521 KTS WTS P.37	1521 ZK 8466 	1521 ZK 8316 	1521 ZK 8456 	1521 ZK 8326 		
1521 KTS WTS P.39	1521 ZK 8266 	1521 ZK 8116 	1521 ZK 8256 	1521 ZK 8126 		
1428WTSB P.41	1428 WU 1264 	1428 WU 1114 			1428 WU 1244 	1428 WU 1134
1427KTS P.51					1427 ZK G8F6 	1427 ZK G7F6
1421 KTS WTS P.43	1421 ZK F466 	1421 ZK F316 	1421 ZK F456 	1421 ZK F326 		
1421 KTS WTS P.45	1421 ZK F266 	1421 ZK F116 	1421 ZK F256 	1421 ZK F126 		
1420 KTS WTS P.47	1420 ZK 7266 	1420 ZK 7116 	1420 ZK 7256 	1420 ZK 7126 		
1418KTS P.49	1418 ZK 6266 	1418 ZK 6116 	1418 ZK 6256 	1418 ZK 6126 		
1227KTS P.51					1227 ZK E8F6 	1227 ZK E7F6
1221 KTS WTS P.53	1221 ZK 5406 	1221 ZK 53D6 	1221 ZK 5496 	1221 ZK 53C6 		

浴室實品照片

型式表

門開方向	短邊-右	短邊-左	長邊-右	長邊-左	中間-右	中間-左
1221 KTSL WTSL P.55	1221 ZK 5206 	1221 ZK 51D6 	1221 ZK 5296 	1221 ZK 51C6 		
	1218 ZK 4206 	1218 ZK 41D6 	1218 ZK 4296 	1218 ZK 41C6 		
1216 KTS P.57	1216 ZK 3206 	1216 ZK 31D6 	1216 ZK 3296 	1216 ZK 31C6 		
	1214 ZK 2A66 	1214 ZK 2B16 	1214 ZK 2A56 	1214 ZK 2B26 		
1214 KTH P.59	1214 RJ 2566 	1214 RJ 2616 	1214 RJ 2556 	1214 RJ 2626 		
	1014 RJ 1A66 	1014 RJ 1B16 	1014 RJ 1A56 	1014 RJ 1B26 		
1214 RS P.60	1014 RJ 1566 	1014 RJ 1616 	1014 RJ 1556 	1014 RJ 1626 		
	0812 RJ C654 	0812 RJ C524 	0812 RJ C564 	0812 RJ C614 		
0812 RS P.69						
無障礙浴廁						
2020KT(S) P.70	2020 ZK DEE4 	2020 ZK DFE4 	2020 ZK DJE4 	2020 ZK DKE4 		
			2425 ZK J1E4 	2425 ZK J2E4 		
2425 KTS P.73						
衛廁專用						
1925 KTTU P.61					1925 ZK H1Z4 	1925 ZK H2Z4
1925 KTUU P.61					1925 ZK H3Z4 	1925 ZK H4Z4

型式表

門開方向	短邊-右	短邊-左	長邊-右	長邊-左	中間-右	中間-左
1427KTT P.63						1427 ZK G1F6
1427KTU P.63						1427 ZK G5F6
1427KUU P.63						1427 ZK G3F6
1227KTT P.63						1227 ZK E1F6
1227KTU P.63						1227 ZK E5F6
1227KUU P.63						1227 ZK E3F6
1216KTU P.65	1216 ZK 3766 	1216 ZK 3816 	1216 ZK 3756 	1216 ZK 3826 		
1214RTU P.66	1214 RJ 2766 	1214 RJ 2816 	1214 RJ 2756 	1214 RJ 2826 		
1214RT P.66	1214 RJ 2166 	1214 RJ 2216 	1214 RJ 2156 	1214 RJ 2226 		
1214RU P.66	1214 RJ 2366 	1214 RJ 2416 	1214 RJ 2356 	1214 RJ 2426 		
1014RT P.67	1014 RJ 1166 	1014 RJ 1216 	1014 RJ 1156 	1014 RJ 1226 		
1014RU P.67	1014 RJ 1366 	1014 RJ 1416 	1014 RJ 1356 	1014 RJ 1426 		
0812RT P.68	0812 RJ C274 	0812 RJ C1B4 	0812 RJ C1C4 	0812 RJ C294 		

低碳、減少廢棄物、有效防漏 整體浴室指標

適用於新建、舊浴室換新、套房、鋼構屋、小木屋及貨櫃屋等

ISO9001



台正字第 7328 號

品質可靠

工程品質確保，提高營建業者信譽及知名度

- 通過 **ISO9001** 國際標準
- 通過 **CNS13943** 國家標準認證
- 榮獲 **MIT** 微笑標章



綠建築標章

友善環境

符合綠建築法規

- **廢棄物** 減少
- **CO2** 減量指標



10年結構體防漏水保固

一站式服務、永續服務

10年 結構體防漏水保固

- 永久售後服務，維修有保障
- 一站式服務，百分百台灣製造



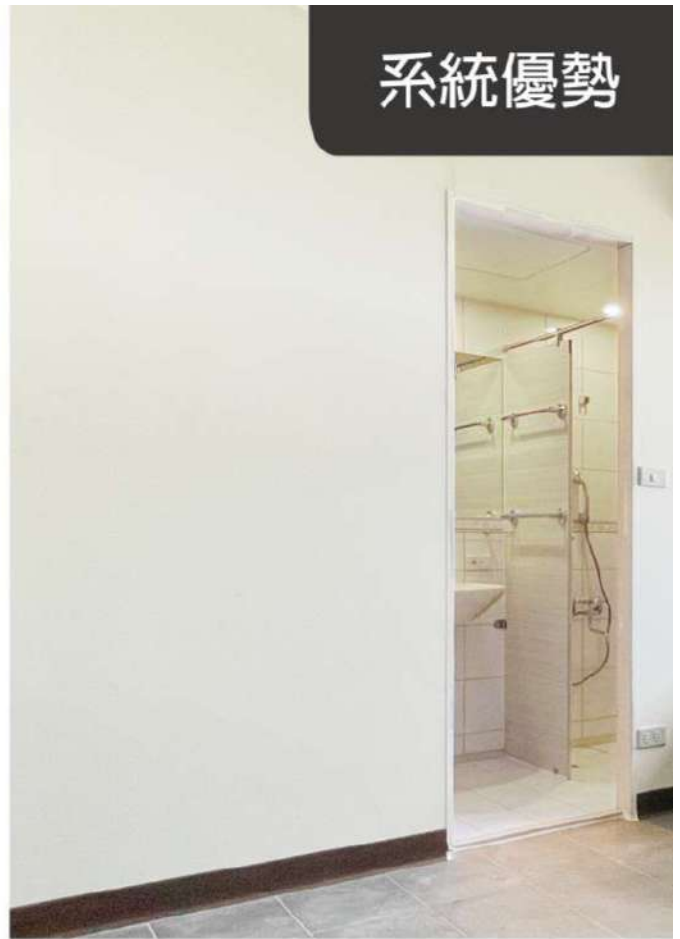
整體浴室耗時4小時

極速安裝

4~8小時 完成安裝

- 專案工期縮短 **3~6個月**
- 資金周轉加快 **20~30%**

系統優勢



● 整體浴室安裝不含封板

系統浴室 金奈整體浴室預鑄式建築部件，防水底盤、壁板、天花板在工廠預製生產，現場乾式施工，整座浴室和結構牆體各自分立，防地震，結構間穩固獨立的防水結構，工業化生產與安裝，高效率質量穩定一致，舒適耐用。

1 底盤安裝



2 壁板安裝



3 門組安裝



4 天花板安裝



5 器具安裝



6 安裝完成



結構特性

壁板

磁磚、鏡子、FRP (SMC) 結合輕量化，將傳統工法不易完成的鏡子內嵌工藝，帶進金奈整體浴室，開創了美學與機能兼具的時尚空間。
清潔保養的便利性，將不同的面飾材料組合出浴室結構體的平整耐用性。

美觀

磁磚壁突破傳統工法施工，整合目縫水平線，整齊美觀。



耐用性佳、易清潔

FRP (SMC) 壁板採用耐候性材料，絕緣性佳，耐用期限長。表面無毛細孔，不易藏污納垢，清潔方便簡單。



天花板

拱頂設計提升空間視覺美感。

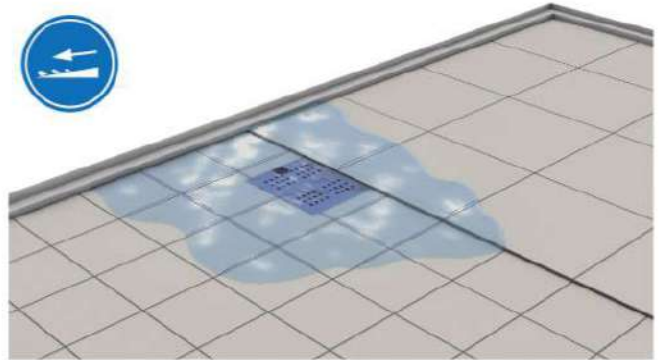


維修孔設計，方便日後維修。



防水底盤100%防漏水

止水線、洩水坡度設計，可達到100%排水及防漏水的功能。



乾濕區分隔，低段差，不溢水。



乾區到濕區導溝設計、單一落水頭。



整合磁磚落水頭蓋。



整合不鏽鋼門框、門檻，降低乾濕區使用高度。



浴缸區洩水坡度設計，不積水、無惡臭。



設計機能

美觀、大方



人造石檯面，搭配木紋側板，具高級感



目縫止滑、止滑磚設計



無一般檯面式龍頭周邊易卡垢問題，易清潔



整合磁磚目縫線開孔鎖付配件



兩段式掛鉤，方便使用



組裝孔位預留開孔，電腦精準定位



CNC、水刀精準定位切割孔位，安全又美觀



收納空間



防水浴櫃設計，增加收納空間



收納平台，增加置物空間，隱藏式維修孔，方便維修



乾濕分離



強化玻璃隔屏，視覺空間寬廣



強化玻璃推門，簡潔無框設計



一字橫拉玻璃門，左右進出方便



弧形玻璃推門，最佳空間設計



設計機能

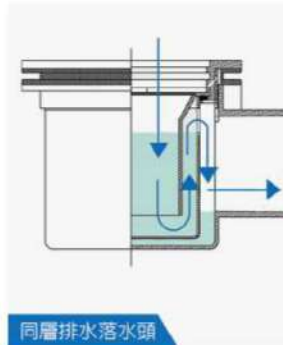
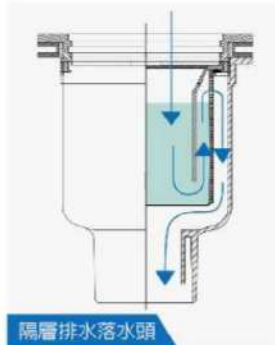
清潔維護簡單



可拆解總存落水頭，清潔簡易

水封設計，具防臭、防蟲效果

白鐵蓋雙重阻隔，防止阻塞



清潔順序



拆除式浴缸側板，方便日後浴缸排水管維修

滿水設計（無溢水孔）



沖污龍頭方便清潔，且可使用於地板清潔

內嵌鏡設計，安全，減少鏡面氧化



能源節省



符合金級省水規範

局部除霧設計，防水耐用

DC直流馬達，靜音省電，濾網型設計



省水蓮蓬頭、臉盆龍頭

LED嵌燈體積小，使用壽命長，低耗能，安裝簡單



智能化設計

智能馬桶蓋配置，更舒適方便的清潔功能

獨立不鏽鋼進水管，降噪音，易維修



2030WTSB

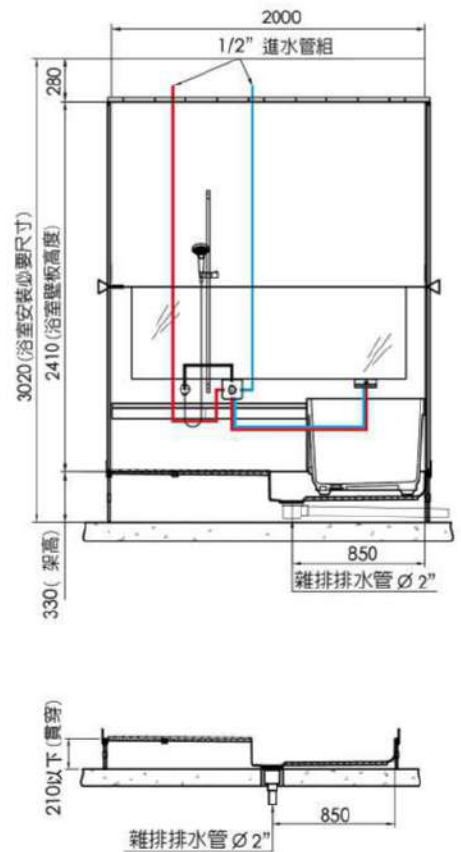
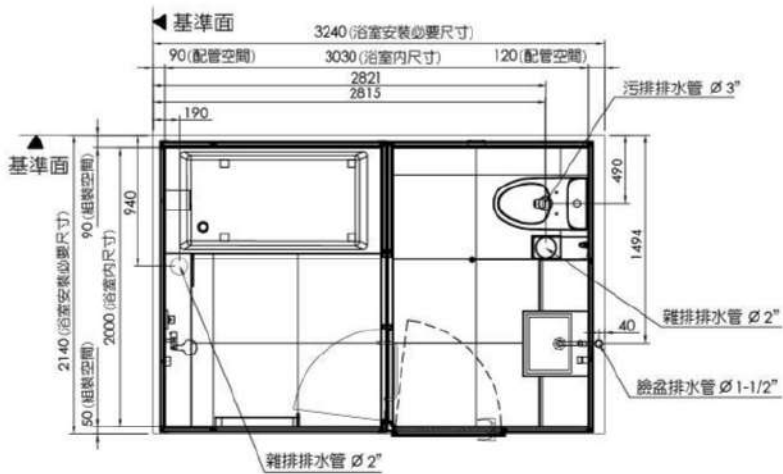


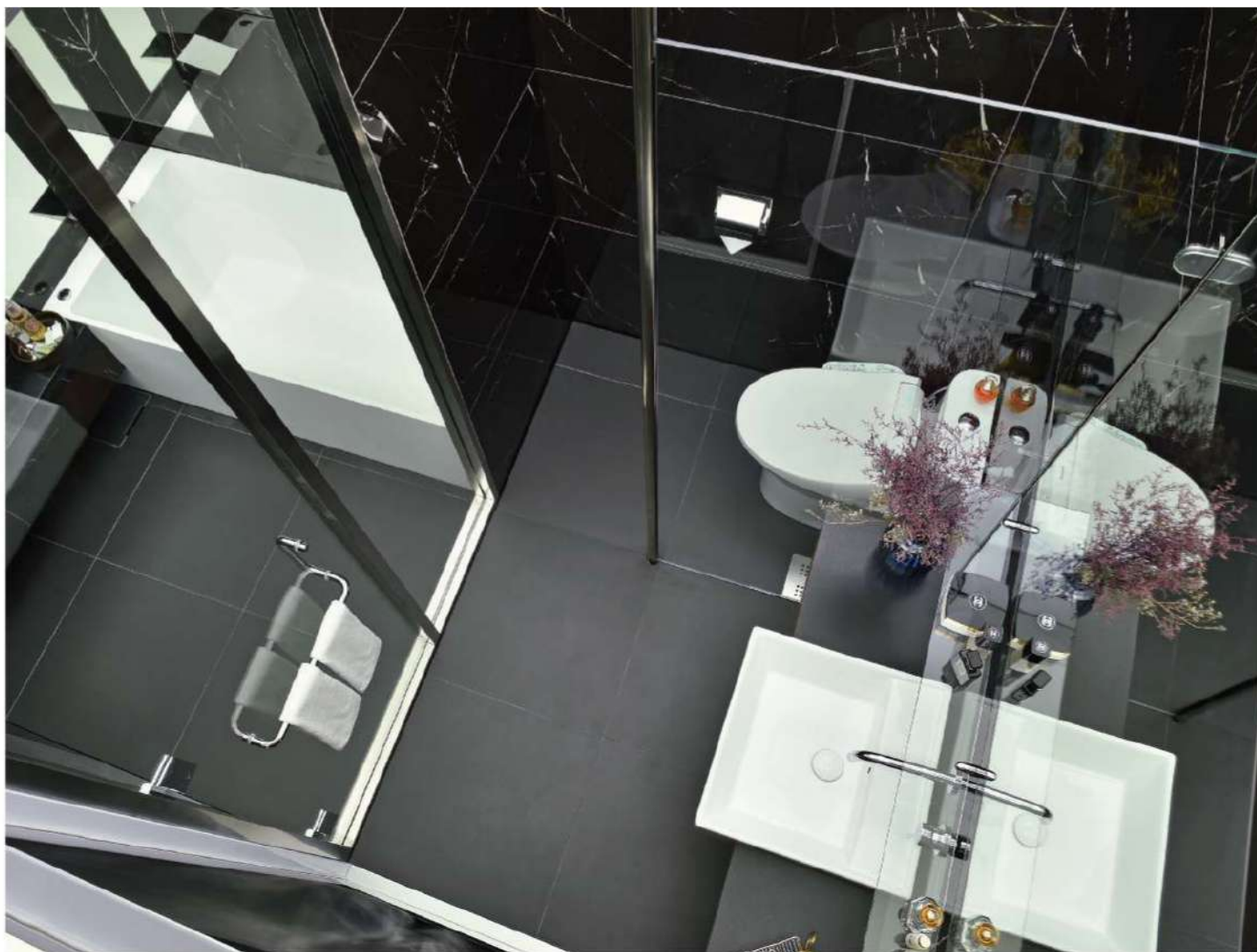
● 拍照實品為客製化 地磚尺寸60X60cm 壁磚尺寸75X150cm 僅供參考

2030WTSB

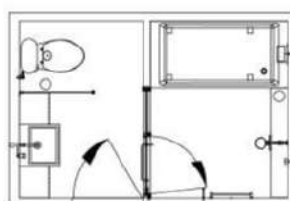
總重量 1493kg ± 5%

- 地磚尺寸60X60cm 壁磚尺寸60X120cm
- 人造石優質浴缸

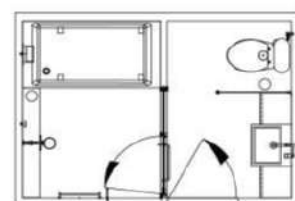




● 浴室模組、色調及磁磚面材以實品銷售為主



2030 WU 6244



2030 WU 6134

1837WTSB



● 拍照實品為客製化 地磚尺寸60X60cm 乾區壁磚尺寸120X240cm 濕區壁磚尺寸100X300cm 僅供參考

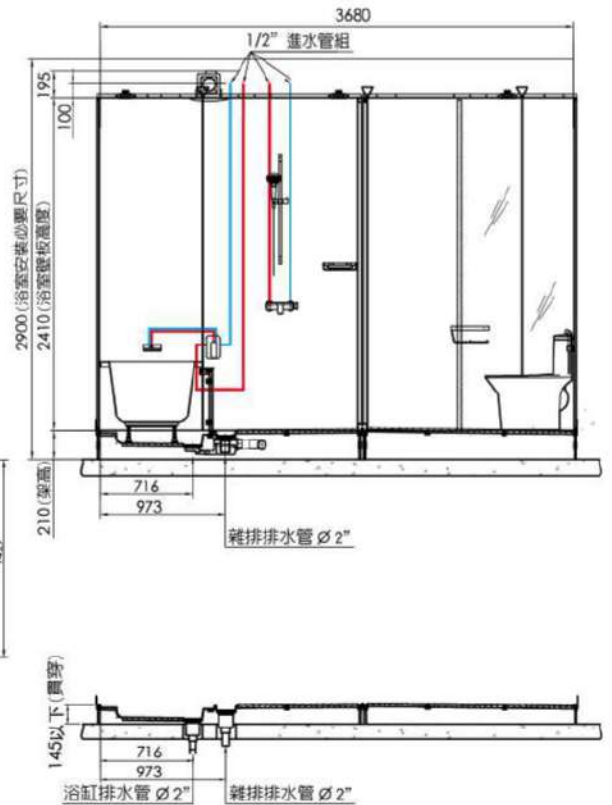
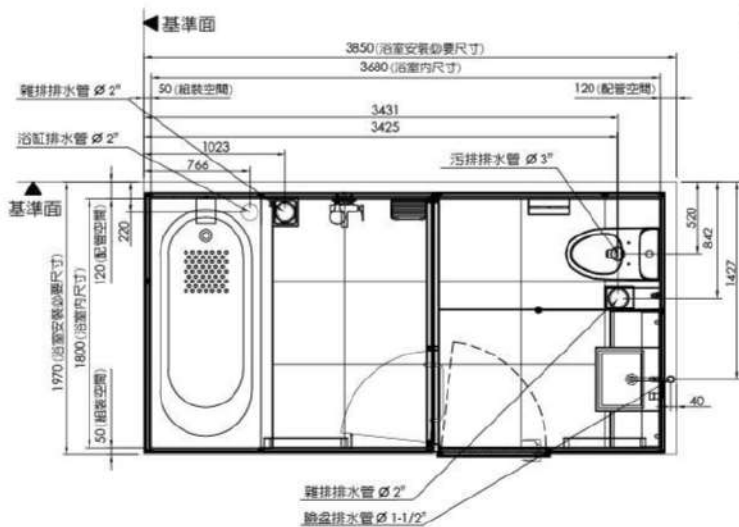
1837WTSB

1635WTSB

總重量 1543kg ± 5%

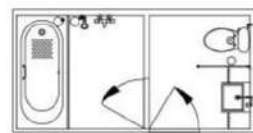
總重量 1362kg ± 5%

- 地磚尺寸60X60cm 壁磚尺寸60X120cm
- 壓克力優質浴缸

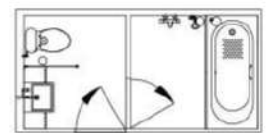




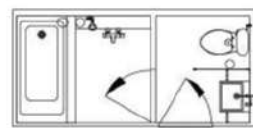
● 浴室模組、色調及磁磚面材以實品銷售為主



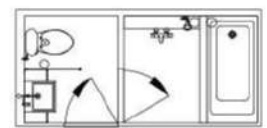
1837 WU A234



1837 WU A144



1635 WU 4234



1635 WU 4144

1632WTSB



● 浴室模組、色調及磁磚面材以賣品銷售為主

1632WTSB

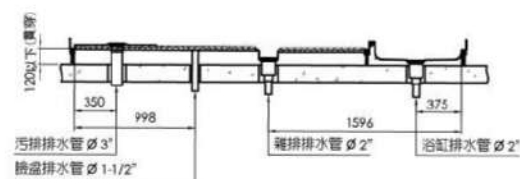
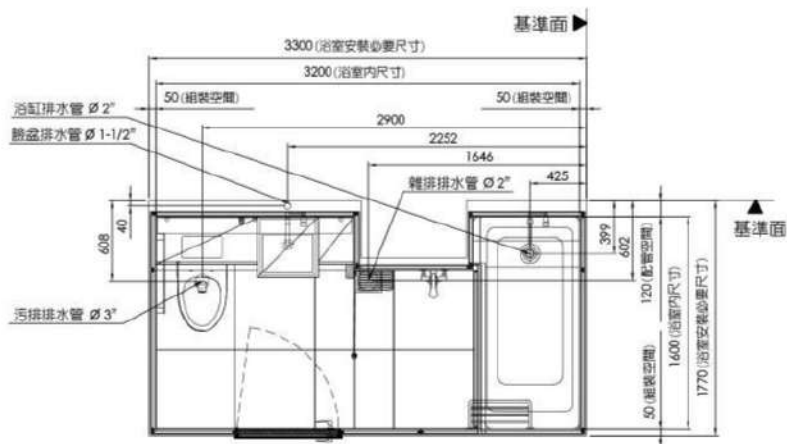
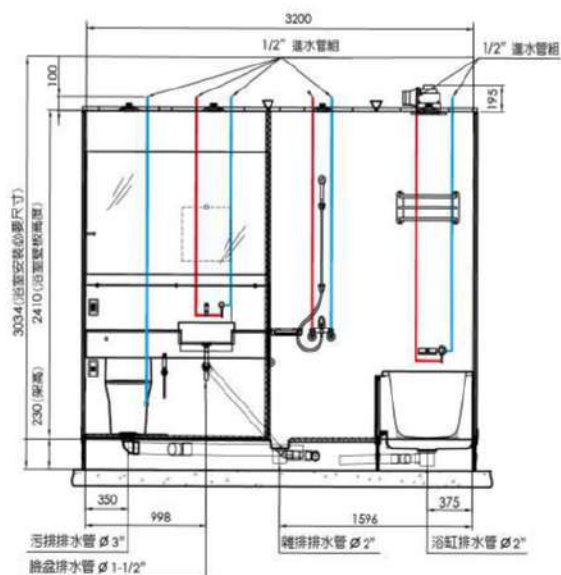
1632WTSBL

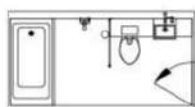
總重量 1125kg ± 5%

總重量 1176kg ± 5%

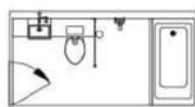
● 地磚尺寸60X60cm 壁磚尺寸60X120cm

● 壓克力優質浴缸

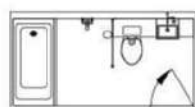




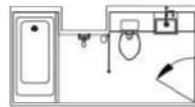
1632 WU 3264



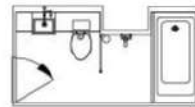
1632 WU 3114



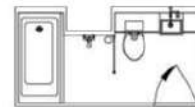
1632 WU 3254



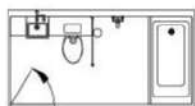
1632 WU 3464



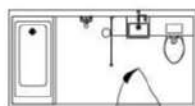
1632 WU 3314



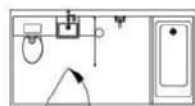
1632 WU 3454



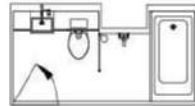
1632 WU 3124



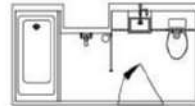
1632 WU 3244



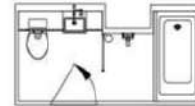
1632 WU 3134



1632 WU 3324



1632 WU 3444



1632 WU 3334

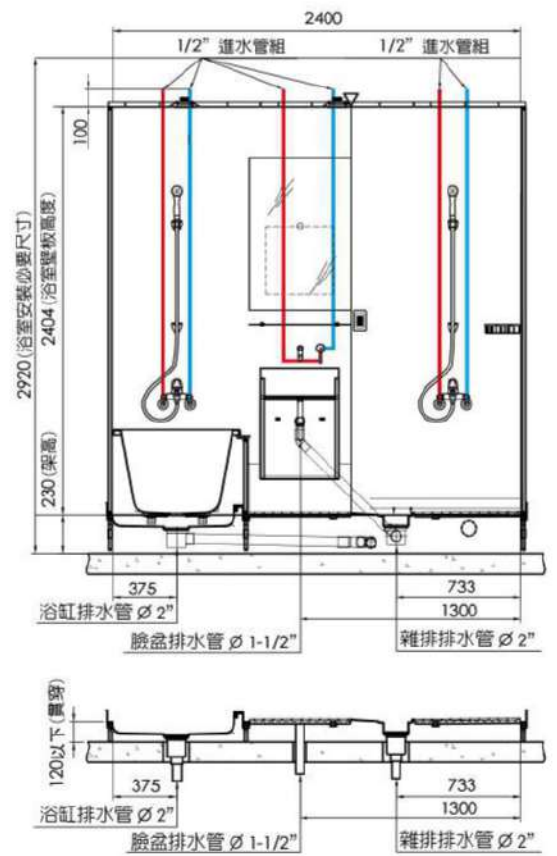
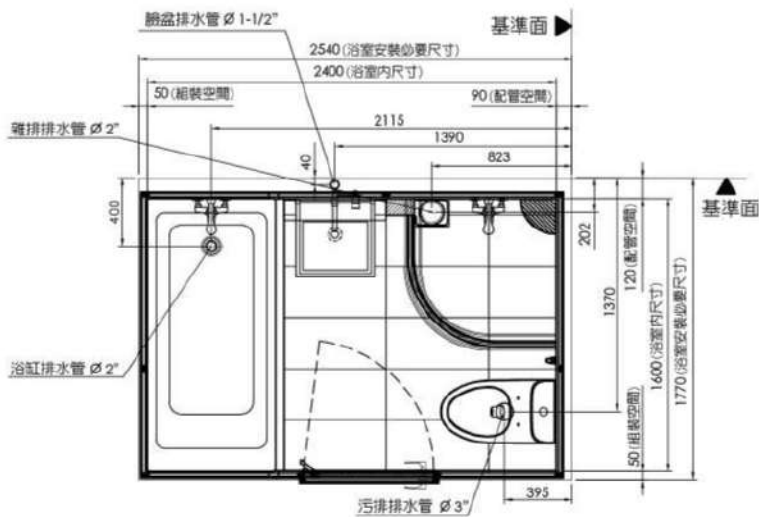
1624WTSB



1624WTSB

總重量 985kg ± 5%

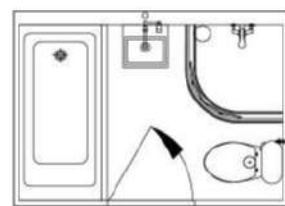
- 壓克力優質浴缸



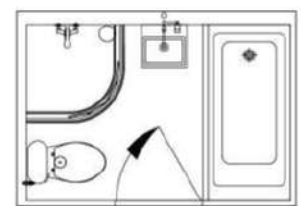


● 浴室模組、色調及磁磚面材以實品銷售為主

- | | | | | | |
|---|---|---|---|---|---|
|  |  |  |  |  |  |
| 馬桶 | 智能馬桶蓋 | 浴缸 | 淋浴拉門 | 淋浴龍頭 | 沖污龍頭 |
|  |  |  |  |  |  |
| 除霧鏡 | 臉盆組 | 浴櫃 | 玻璃平台 | 置物盤 | 置物毛巾架 |
|  |  |  |  |  | |
| 通風扇 | 嵌燈組 | 插座 | 門組 | 門擋 | |



1624 WU BR34



1624 WU BQ44

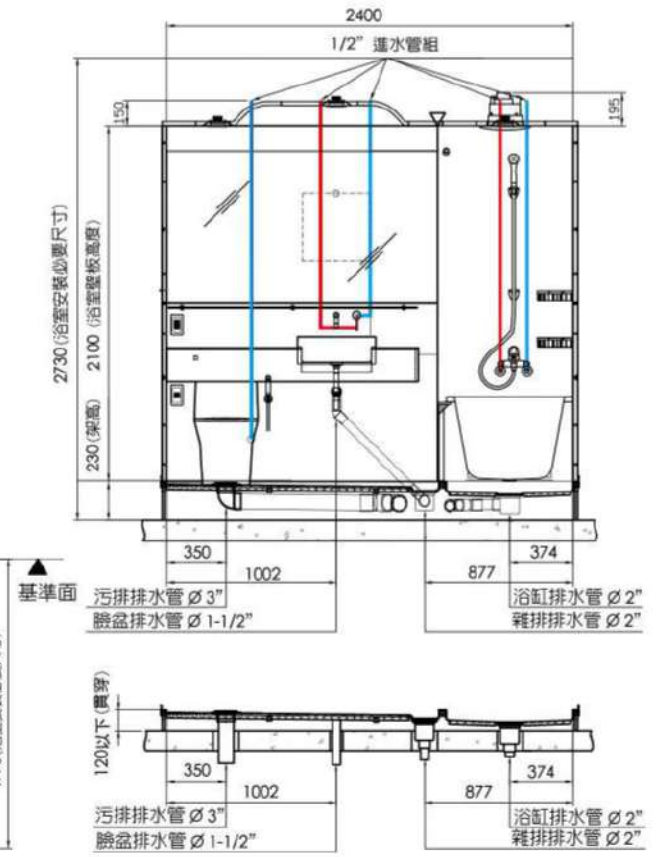
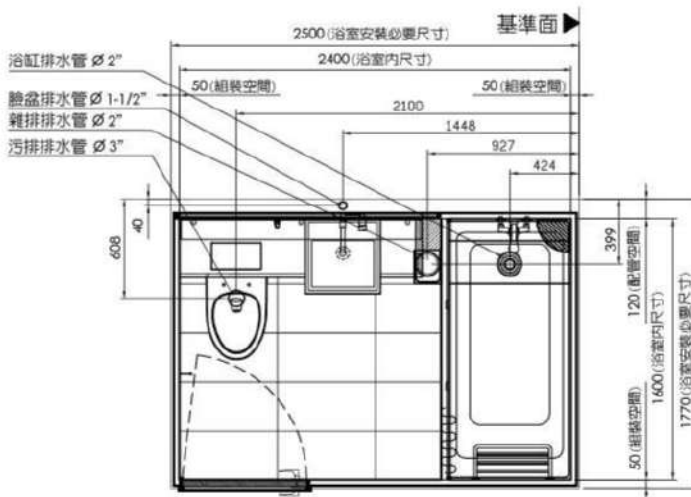
1624KTSB



1624KTSB

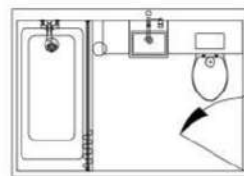
總重量 546kg ± 5%

- 壓克力優質浴缸

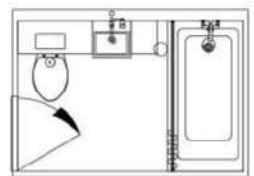




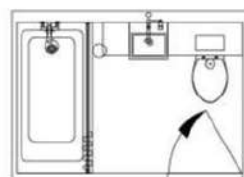
● 浴室模組、色調及磁磚面材以實品銷售為主



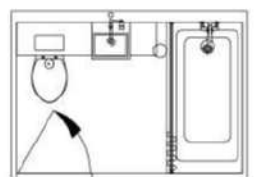
1624 ZK B666



1624 ZK B516



1624 ZK B656



1624 ZK B526

1624KTS



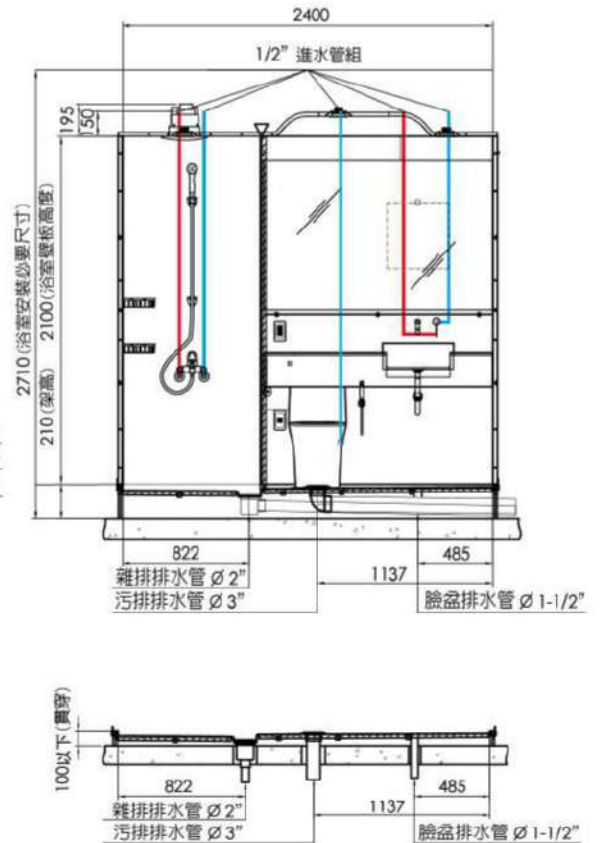
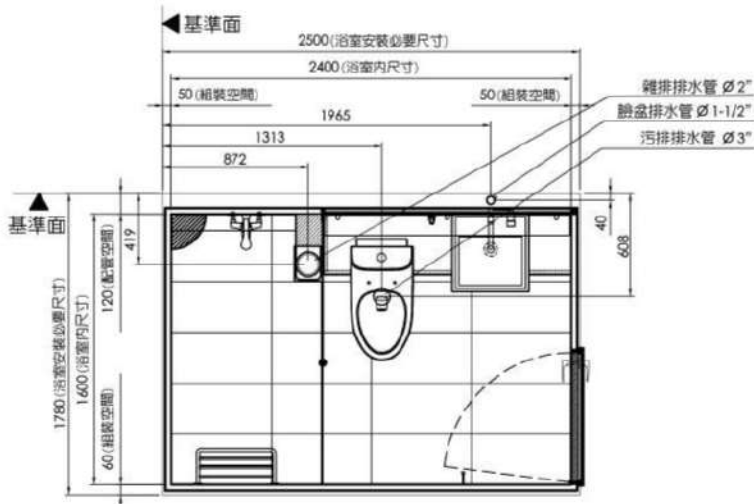
1624KTS

總重量 562kg ± 5%

1624WTS

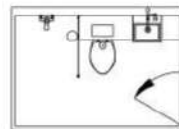
壁板為全磁磚

總重量 801kg ± 5%

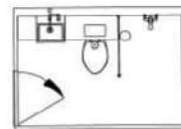




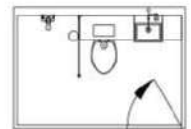
● 浴室模組、色調及磁磚面材以實品銷售為主



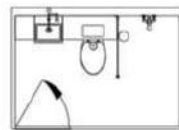
1624 ZK B466
1624 WU B466



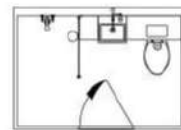
1624 ZK B316
1624 WU B316



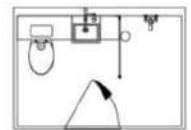
1624 ZK B456
1624 WU B456



1624 ZK B326
1624 WU B326



1624 ZK B446
1624 WU B446



1624 ZK B336
1624 WU B336

1624KTSL



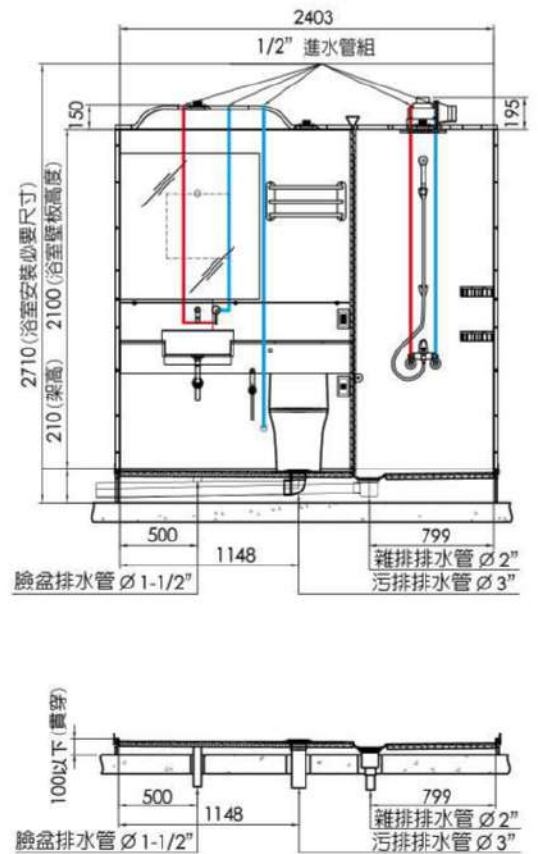
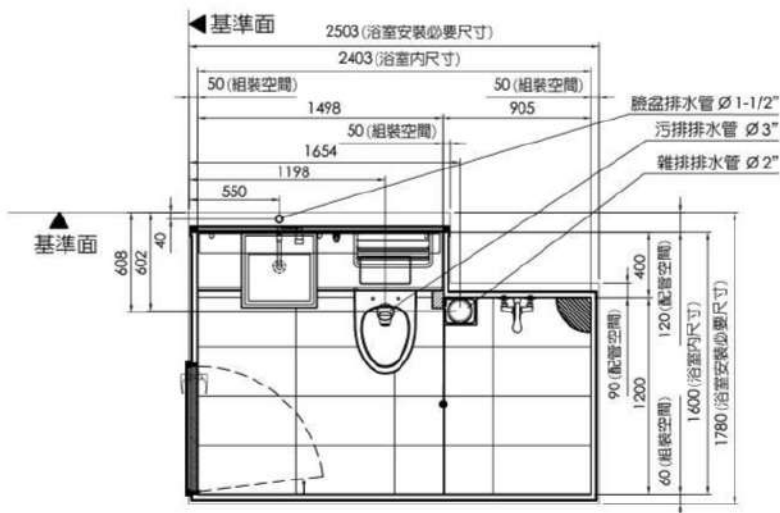
1624KTSL

總重量 502kg ± 5%

1624WTSL

壁板為全磁磚

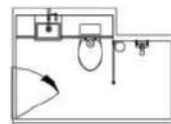
總重量 776kg ± 5%



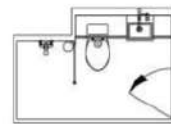


● 浴室模組、色調及磁磚面材以實品銷售為主

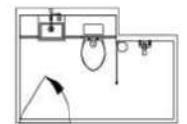
- | | | | | | |
|---|---|---|---|---|---|
|  |  |  |  |  |  |
| 馬桶 | 智能馬桶蓋 | 淋浴玻璃 | 淋浴龍頭 | 沖污龍頭 | 除霧鏡 |
|  |  |  |  |  |  |
| 臉盆組 | 玻璃平台 | 馬桶平台 | 三角置物盤 | 置物毛巾架 | 通風扇 |
|  |  |  |  |  | |
| 嵌燈組 | 插座 | 雙插座 | 門組 | 門擋 | |



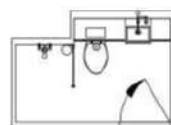
1624 ZK B716
1624 WU B716



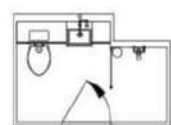
1624 ZK B866
1624 WU B866



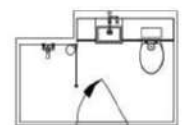
1624 ZK B726
1624 WU B726



1624 ZK B856
1624 WU B856



1624 ZK B736
1624 WU B736



1624 ZK B846
1624 WU B846

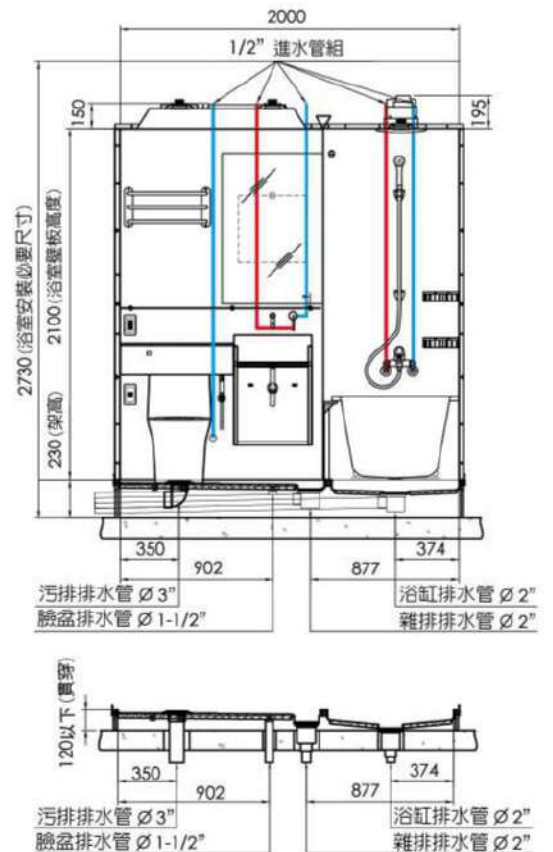
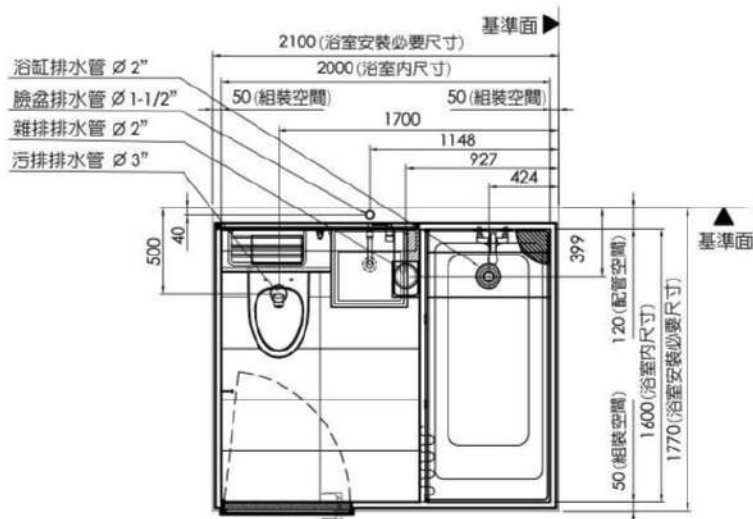
1620KTSB



1620KTSB

總重量 673kg ± 5%

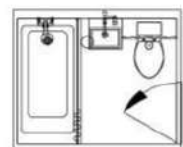
- 壓克力優質浴缸



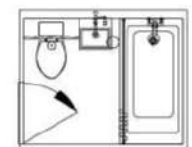


● 浴室模組、色調及磁磚面材以實品銷售為主

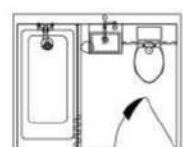
- | | | | | | |
|---|---|---|---|---|---|
|  |  |  |  |  |  |
| 馬桶 | 智能馬桶蓋 | 浴缸 | 浴簾組 | 淋浴龍頭 | 沖污龍頭 |
|  |  |  |  |  |  |
| 除霧鏡 | 臉盆組 | 浴槽 | 玻璃平台 | 馬桶平台 | 三角置物盤 |
|  |  |  |  |  |  |
| 置物毛巾架 | 通風扇 | 炭燈組 | 插座 | 雙插座 | 門組 |
|  | | | | | |
| 門擋 | | | | | |



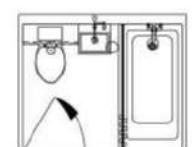
1620 ZK A466



1620 ZK A316



1620 ZK A456



1620 ZK A326

1616KTS



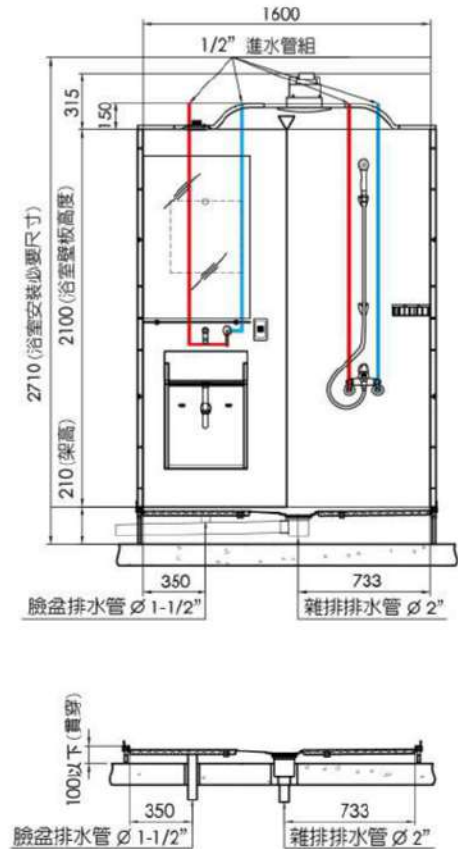
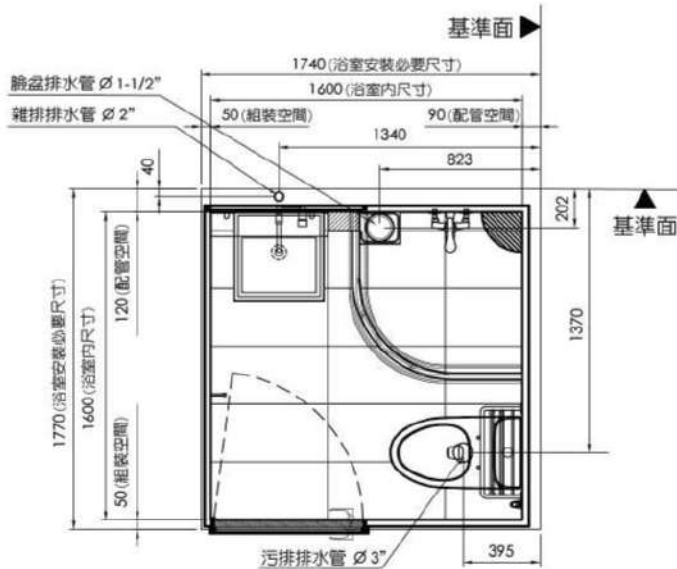
1616KTS

總重量 408kg ± 5%

1616WTS

壁板為全磁磚

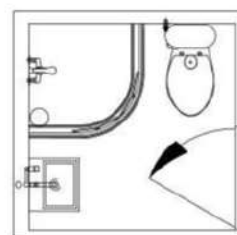
總重量 655kg ± 5%



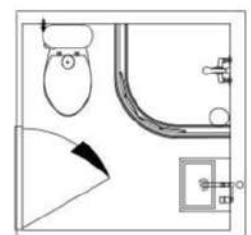


● 浴室模組、色調及磁磚面材以實品銷售為主

- | | | | | | |
|---|--|---|---|---|---|
|  |  |  |  |  |  |
| 馬桶 | 智能馬桶蓋 | 淋浴拉門 | 淋浴龍頭 | 沖污龍頭 | 除霧鏡 |
|  |  |  |  |  |  |
| 臉盆組 | 浴槽 | 玻璃平台 | 置物毛巾架 | 通風扇 | 嵌燈組 |
| | |  |  |  | |
| | | 插座 | 門組 | 門擋 | |



1616 ZK 9226
1616 WU 9226



1616 ZK 9156
1616 WU 9156

1529WTSB



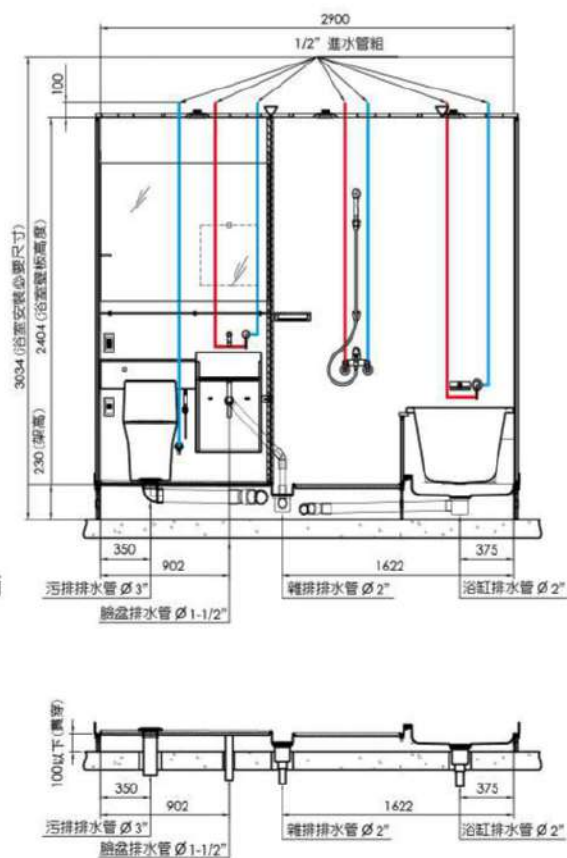
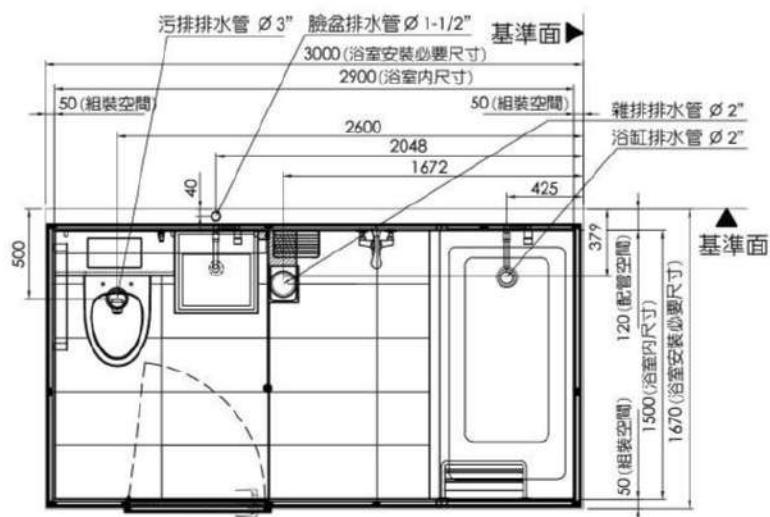
1529WTSB

總重量 1099kg ± 5%

● 壓克力優質浴缸

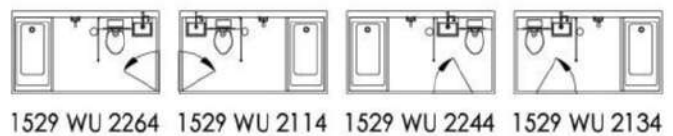
1529WTSBL

總重量 1081kg ± 5%





● 浴室模組、色調及磁磚面材以實品銷售為主



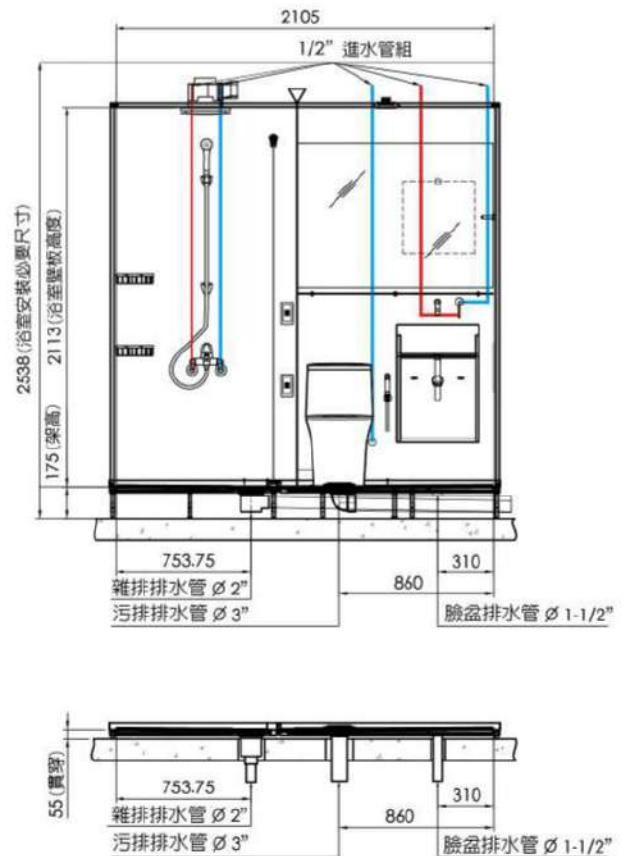
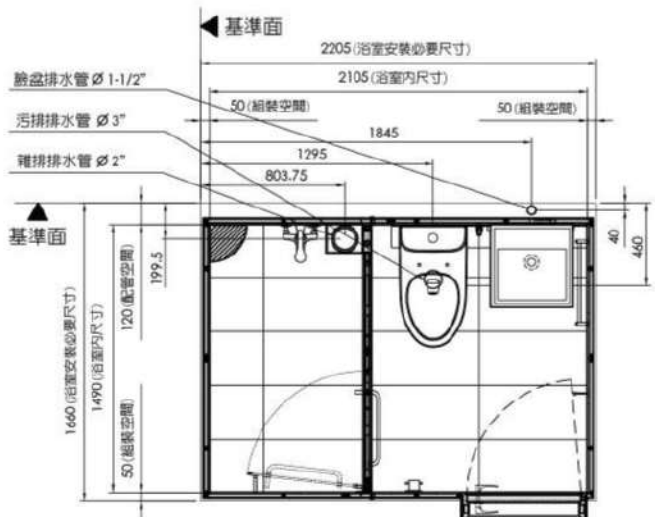
1521ATT



1521ATT

總重量 731kg ± 5%

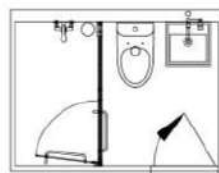
- 地板為兩片式防水底盤
- 壁板為全磁磚



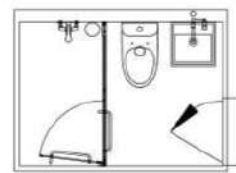


● 浴室模組、色調及磁磚面材以實品銷售為主

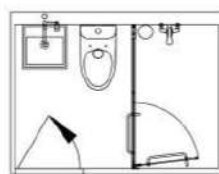
- | | | | | | |
|---|---|---|---|---|---|
|  |  |  |  |  |  |
| 馬桶 | 智能馬桶蓋 | 淋浴推門 | 淋浴龍頭 | 除霧鏡 | 臉盆組 |
|  |  |  |  |  |  |
| 浴槽 | 玻璃平台 | 三角置物盤 | 置物毛巾架 | 毛巾架 | 通風扇 |
|  |  |  |  | | |
| 嵌燈組 | 插座 | 門組 | 門擋 | | |



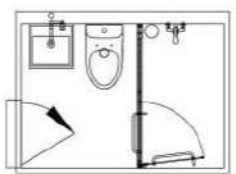
1521 KN 8H54



1521 KN 8H64



1521 KN 8G24



1521 KN 8G14

1521KTS



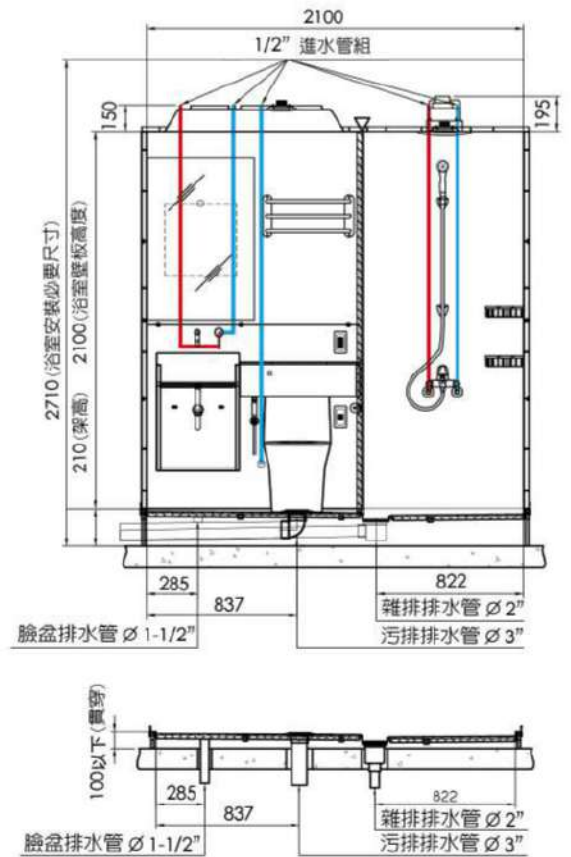
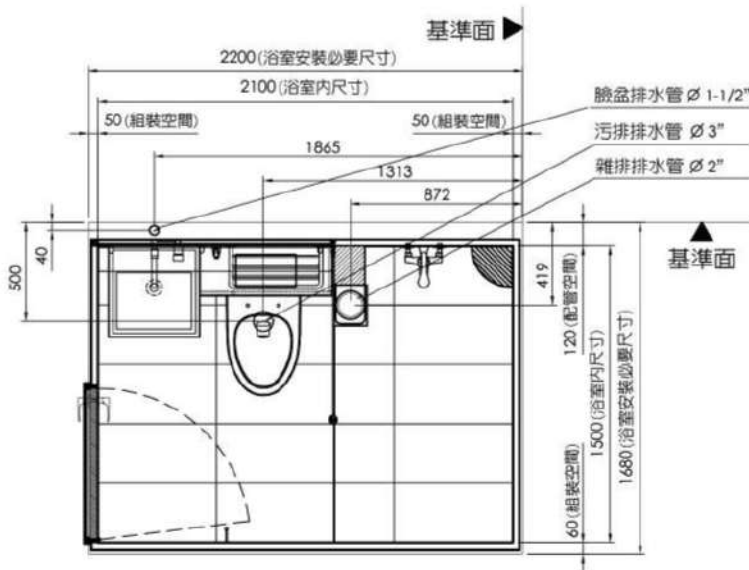
1521KTS

總重量 506kg ± 5%

1521WTS

壁板為全磁磚

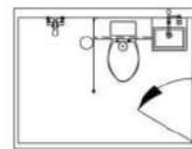
總重量 735kg ± 5%



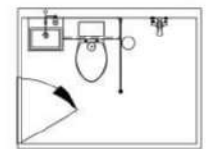


● 浴室模組、色調及磁磚面材以實品銷售為主

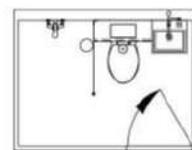
- | | | | | | |
|---|---|---|---|---|---|
|  |  |  |  |  |  |
| 馬桶 | 智能馬桶蓋 | 淋浴玻璃 | 淋浴龍頭 | 沖污龍頭 | 除霧鏡 |
|  |  |  |  |  |  |
| 臉盆組 | 浴槽 | 玻璃平台 | 馬桶平台 | 三角置物盤 | 置物毛巾架 |
|  |  |  |  |  |  |
| 通風扇 | 嵌燈組 | 插座 | 雙插座 | 門組 | 門擋 |



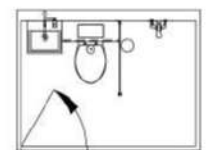
1521 ZK 8466
1521 WU 8466



1521 ZK 8316
1521 WU 8316



1521 ZK 8456
1521 WU 8456



1521 ZK 8326
1521 WU 8326

1521KTSL



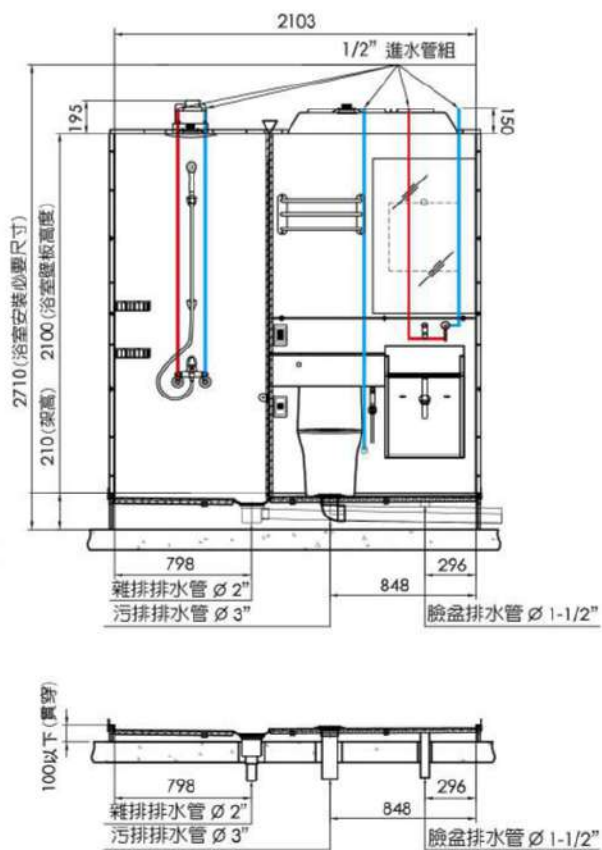
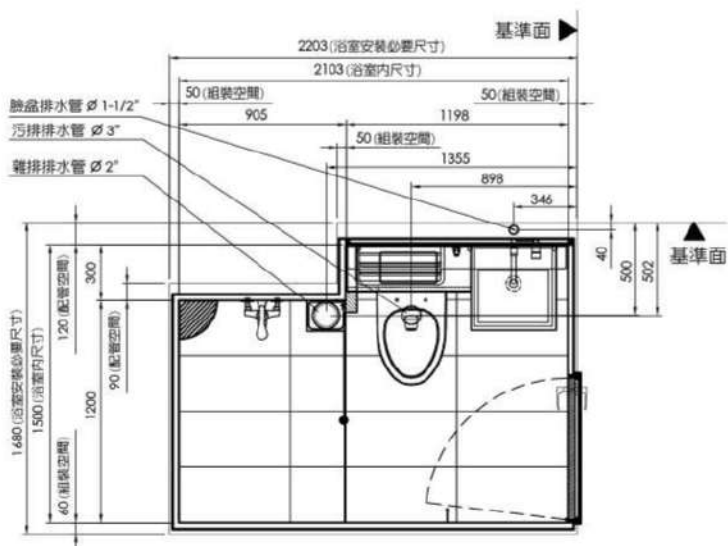
1521KTSL

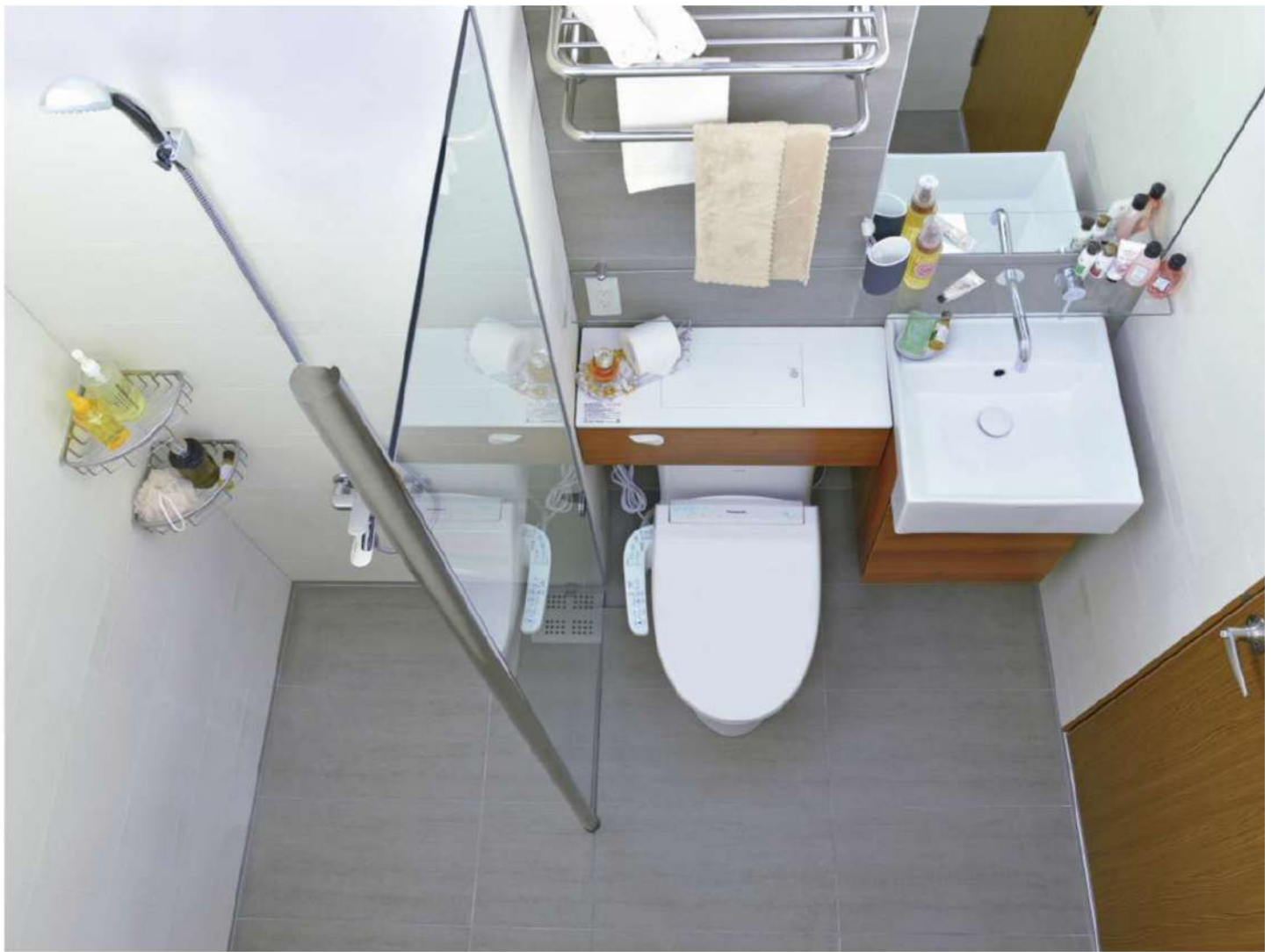
總重量 450kg ± 5%

1521WTSL

壁板為全磁磚

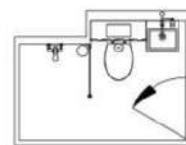
總重量 696kg ± 5%



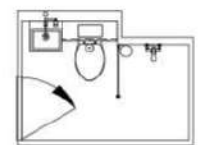


● 浴室模組、色調及磁磚面材以實品銷售為主

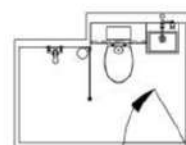
- | | | | | | |
|---|---|---|---|---|---|
|  |  |  |  |  |  |
| 馬桶 | 智能馬桶蓋 | 淋浴玻璃 | 淋浴龍頭 | 沖污龍頭 | 除霧鏡 |
|  |  |  |  |  |  |
| 臉盆組 | 浴槽 | 玻璃平台 | 馬桶平台 | 三角置物盤 | 置物毛巾架 |
|  |  |  |  |  |  |
| 通風扇 | 炭燈組 | 插座 | 雙插座 | 門組 | 門擋 |



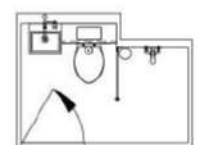
1521 ZK 8266
1521 WU 8266



1521 ZK 8116
1521 WU 8116



1521 ZK 8256
1521 WU 8256



1521 ZK 8126
1521 WU 8126

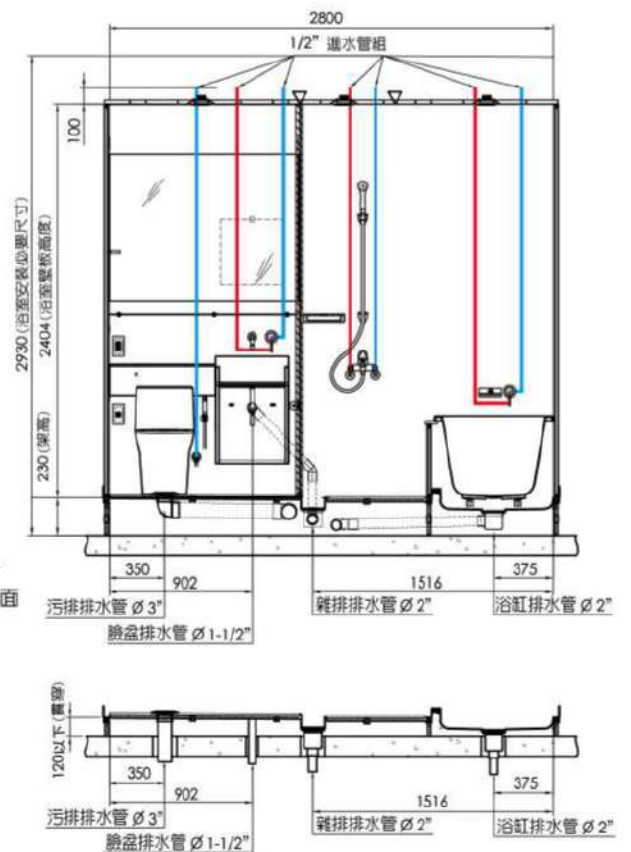
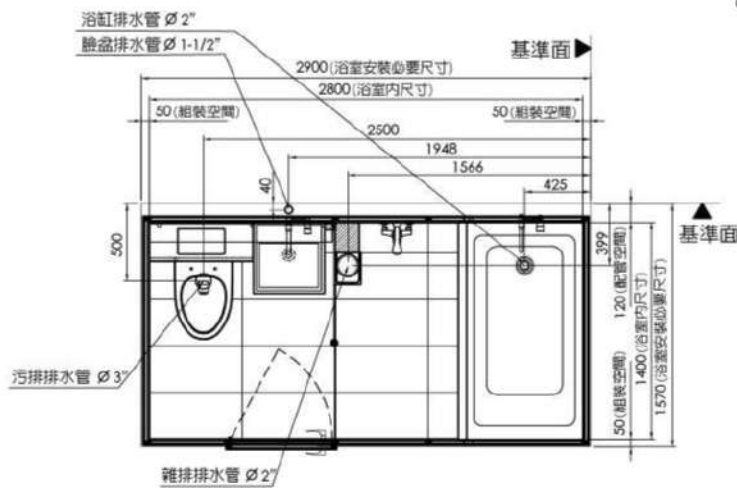
1428WTSB



1428WTSB

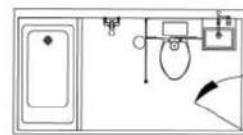
總重量 996kg ± 5%

● 壓克力優質浴缸

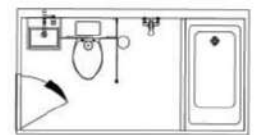




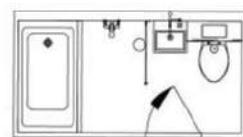
● 浴室模組、色調及磁磚面材以實品銷售為主



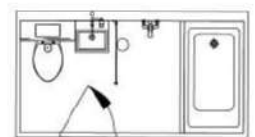
1428 WU 1264



1428 WU 1114



1428 WU 1244



1428 WU 1134

1421KTS



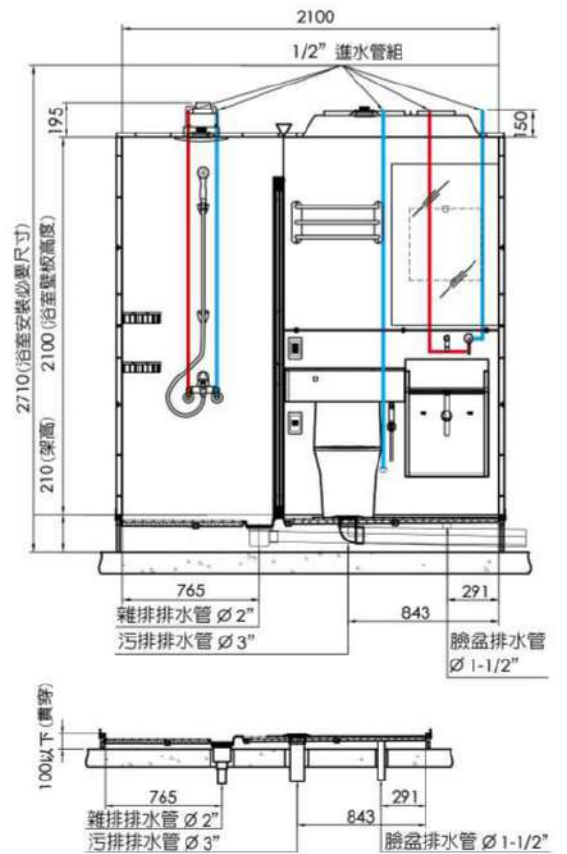
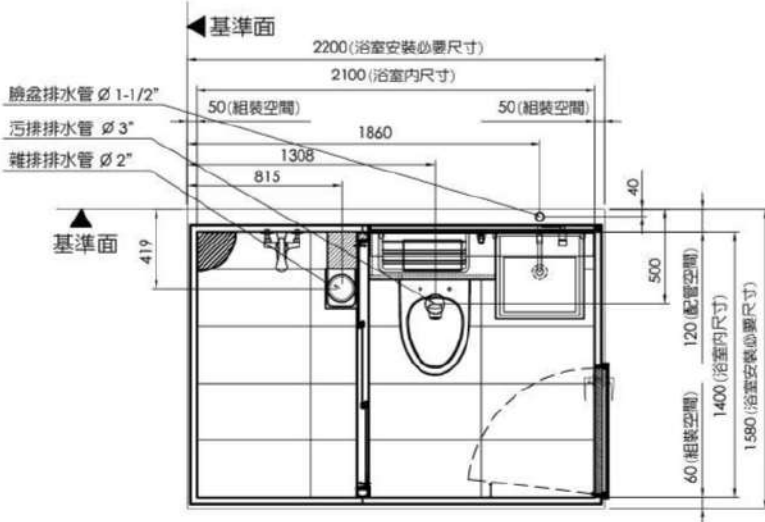
1421KTS

總重量 464kg ± 5%

1421WTS

壁板為全磁磚

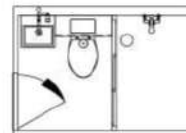
總重量 687kg ± 5%



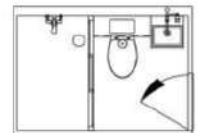


● 浴室模組、色調及磁磚面材以實品銷售為主

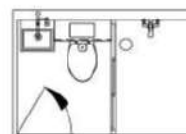
- | | | | | | |
|---|---|---|---|---|---|
|  |  |  |  |  |  |
| 馬桶 | 智能馬桶蓋 | 淋浴拉門 | 淋浴龍頭 | 沖污龍頭 | 除霧鏡 |
|  |  |  |  |  |  |
| 臉盆組 | 浴槽 | 玻璃平台 | 馬桶平台 | 三角置物盤 | 置物毛巾架 |
|  |  |  |  |  |  |
| 通風扇 | 嵌燈組 | 插座 | 雙插座 | 門組 | 門擋 |



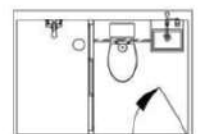
1421 ZK F316
1421 WU F316



1421 ZK F466
1421 WU F466



1421 ZK F326
1421 WU F326



1421 ZK F456
1421 WU F456

1421KTSL



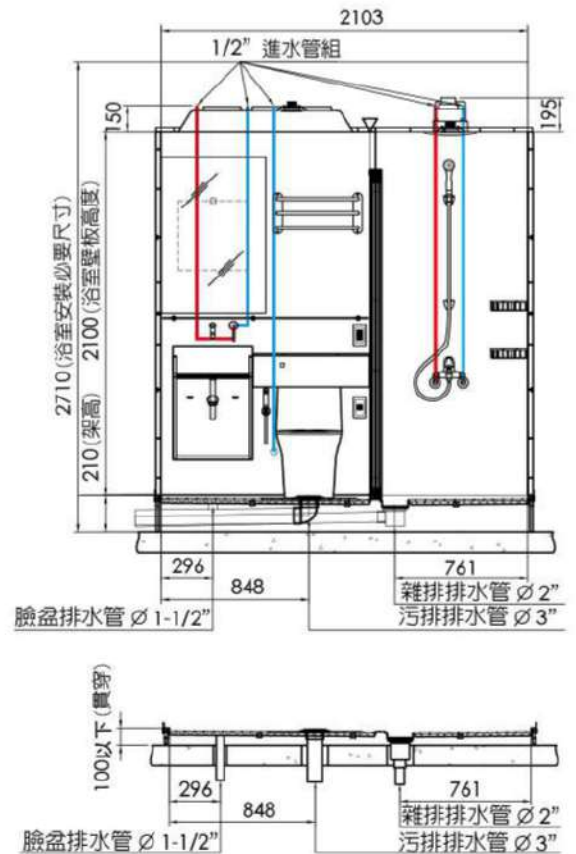
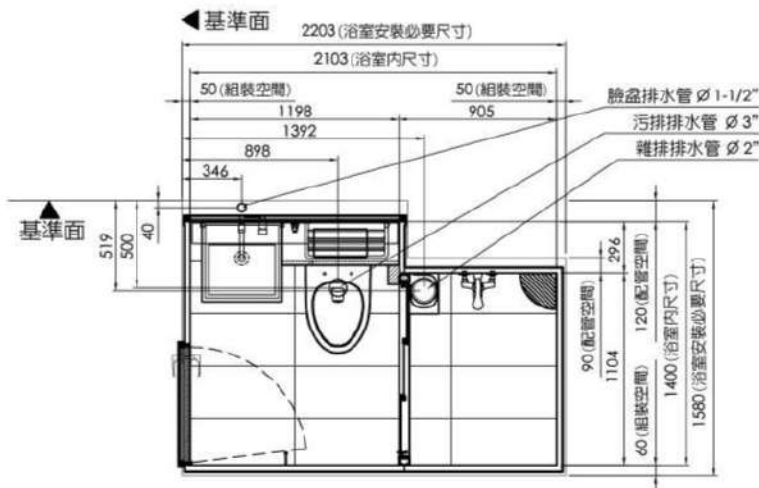
1421KTSL

總重量 452kg ± 5%

1421WTSL

壁板為全磁磚

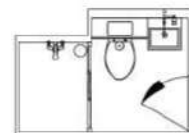
總重量 641kg ± 5%



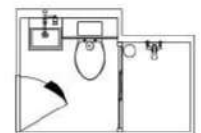


● 浴室模組、色調及磁磚面材以實品銷售為主

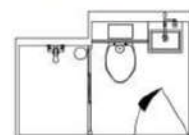
- | | | | | | |
|---|---|---|---|---|---|
|  |  |  |  |  |  |
| 馬桶 | 智能馬桶蓋 | 淋浴拉門 | 淋浴龍頭 | 沖污龍頭 | 除霧鏡 |
|  |  |  |  |  |  |
| 臉盆組 | 浴槽 | 玻璃平台 | 馬桶平台 | 三角置物盤 | 置物毛巾架 |
|  |  |  |  |  |  |
| 通風扇 | 嵌燈組 | 插座 | 雙插座 | 門組 | 門擋 |



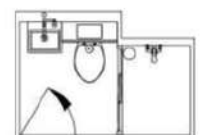
1421 ZK F266
1421 WU F266



1421 ZK F116
1421 WU F116



1421 ZK F256
1421 WU F256



1421 ZK F126
1421 WU F126

1420KTS



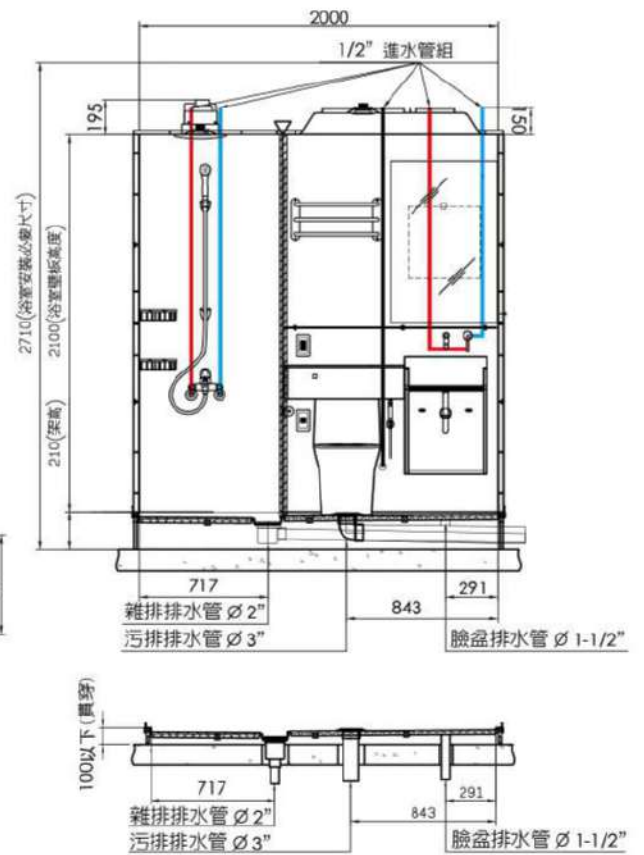
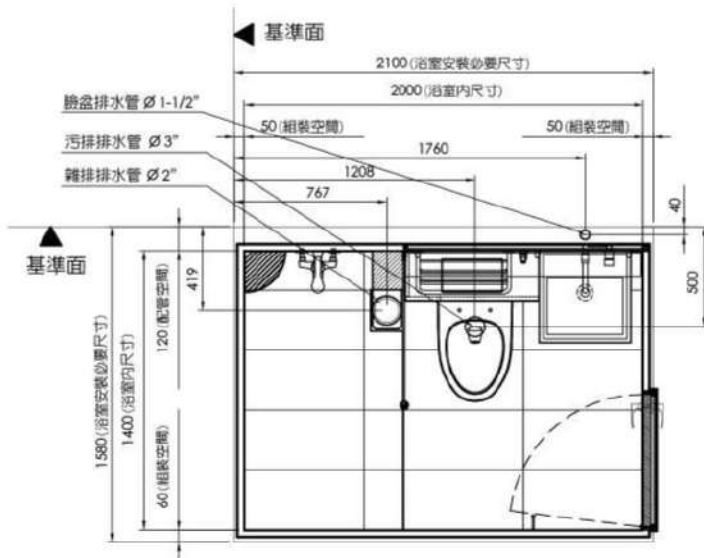
1420KTS

總重量 461kg ± 5%

1420WTS

壁板為全磁磚

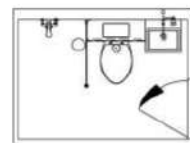
總重量 693kg ± 5%



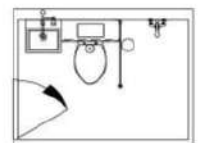


● 浴室模組、色調及磁磚面材以實品銷售為主

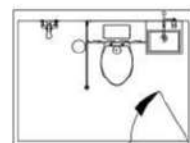
- | | | | | | |
|---|---|---|---|---|---|
|  |  |  |  |  |  |
| 馬桶 | 智能馬桶蓋 | 淋浴玻璃 | 淋浴龍頭 | 沖污龍頭 | 除霧鏡 |
|  |  |  |  |  |  |
| 臉盆組 | 浴槽 | 玻璃平台 | 馬桶平台 | 三角置物盤 | 置物毛巾架 |
|  |  |  |  |  |  |
| 通風扇 | 崁燈組 | 插座 | 雙插座 | 門組 | 門擋 |



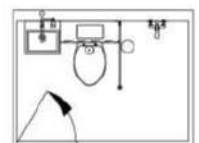
1420 ZK 7266
1420 WU 7266



1420 ZK 7116
1420 WU 7116

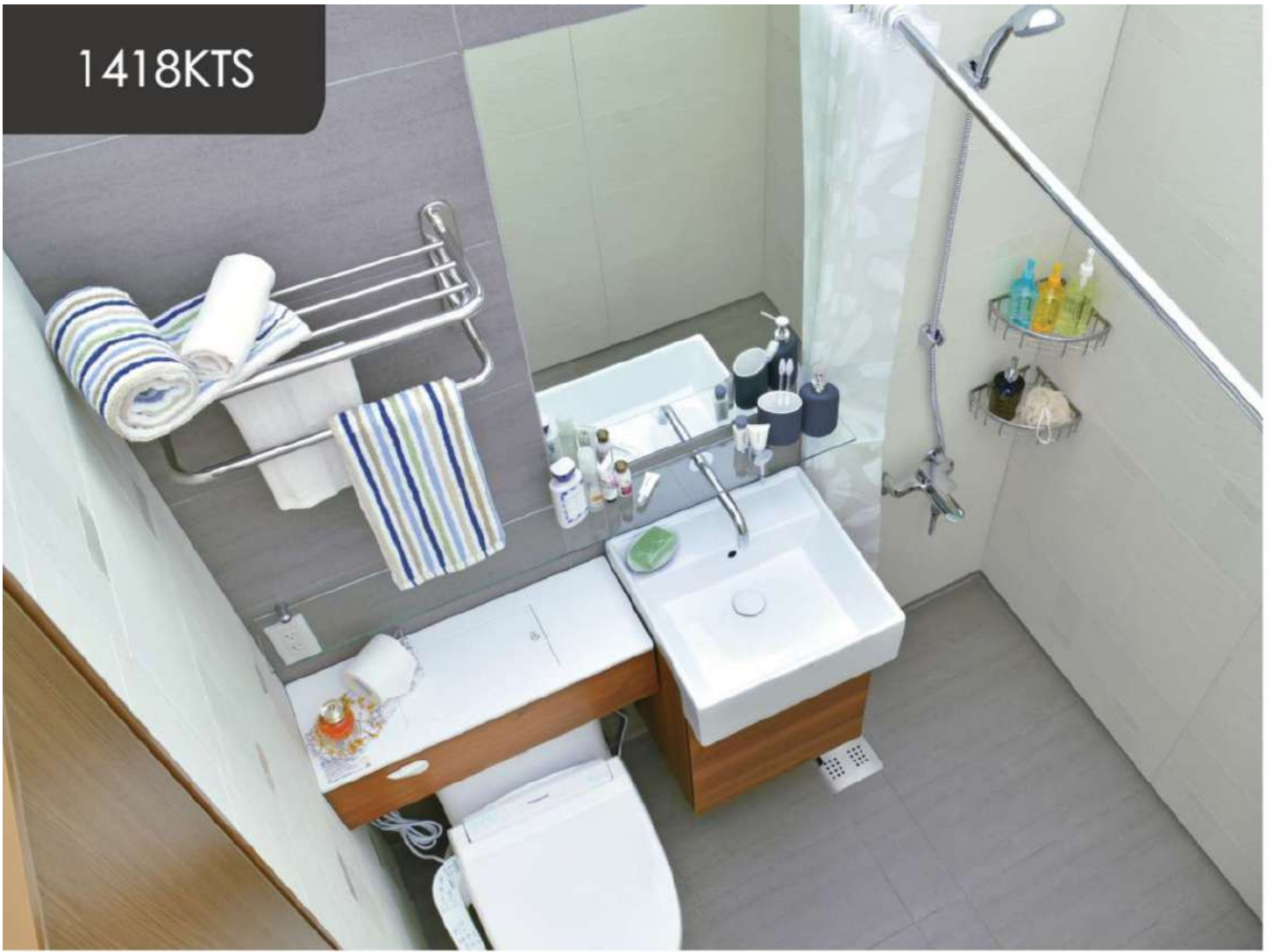


1420 ZK 7256
1420 WU 7256



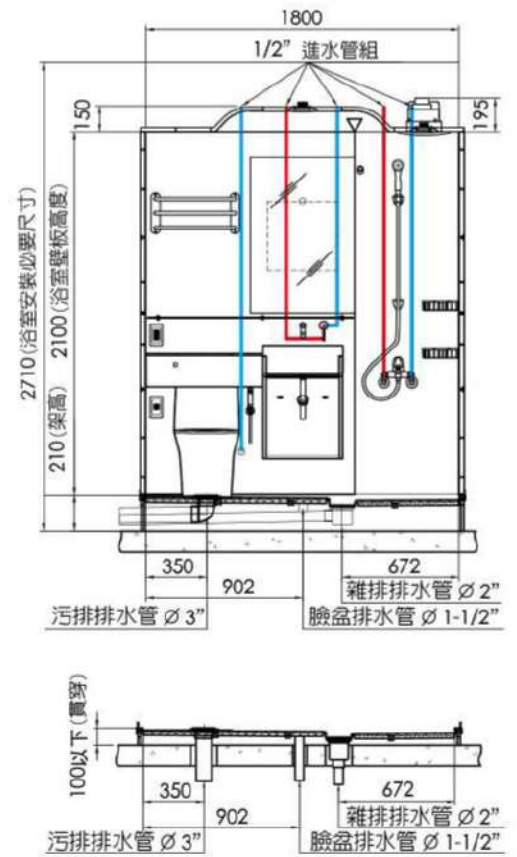
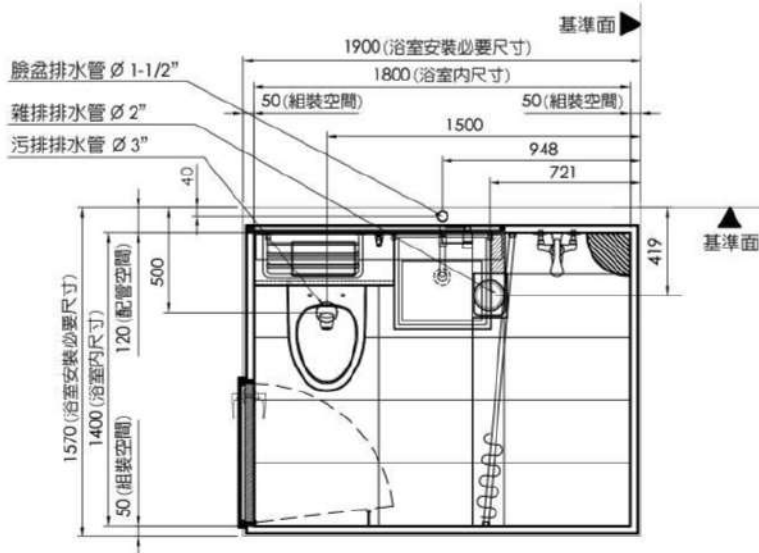
1420 ZK 7126
1420 WU 7126

1418KTS



1418KTS

總重量 399kg ± 5%



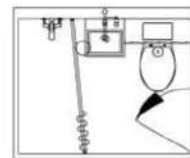


● 斜側式浴簾吊掛方式 加大淋浴區使用空間

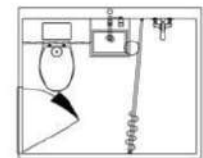


● 浴室模組、色調及磁磚面材以實品銷售為主

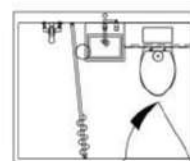
- | | | | | | |
|---|---|---|---|---|---|
|  |  |  |  |  |  |
| 馬桶 | 智能馬桶蓋 | 浴簾組 | 淋浴龍頭 | 沖污龍頭 | 除霧鏡 |
|  |  |  |  |  |  |
| 臉盆組 | 浴槽 | 玻璃平台 | 馬桶平台 | 三角置物盤 | 置物毛巾架 |
|  |  |  |  |  |  |
| 通風扇 | 嵌燈組 | 插座 | 雙插座 | 門組 | 門擋 |



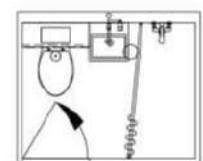
1418 ZK 6266



1418 ZK 6116

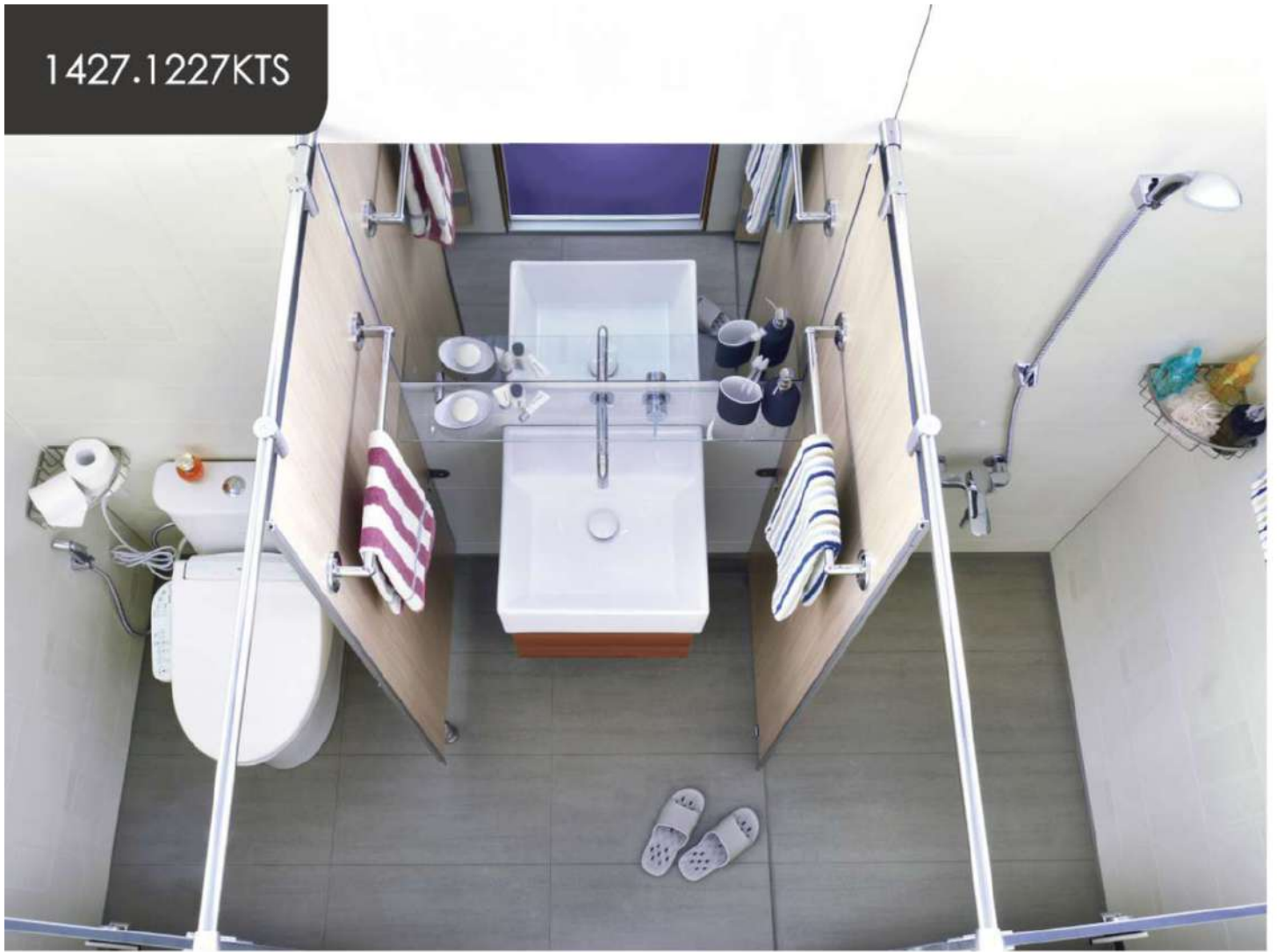


1418 ZK 6256



1418 ZK 6126

1427.1227KTS

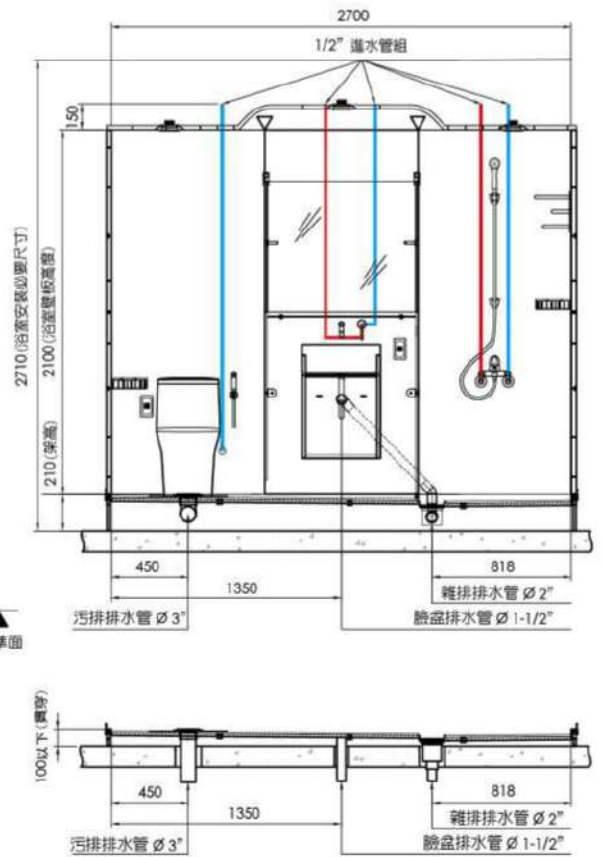
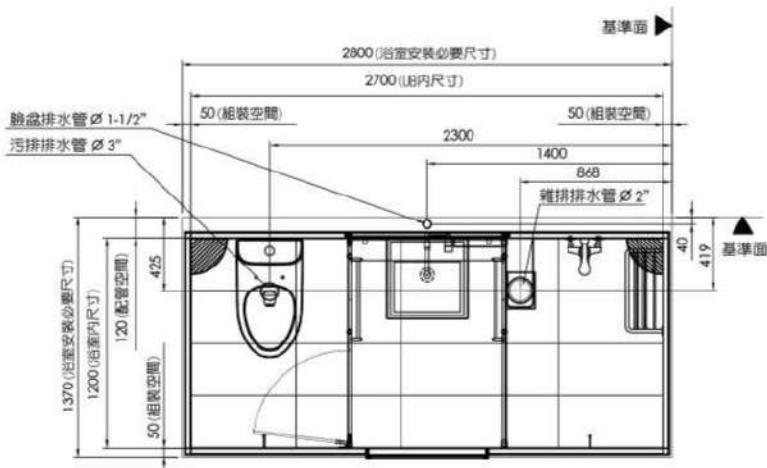


1427KTS

總重量 674kg ± 5%

1227KTS

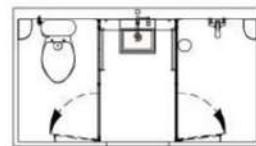
總重量 581kg ± 5%



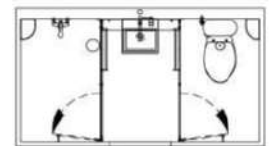


● 浴室模組、色調及磁磚面材以實品銷售為主

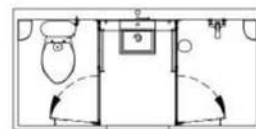
- | | | | | | |
|---|---|---|---|---|---|
|  |  |  |  |  |  |
| 馬桶 | 智能馬桶蓋 | 淋浴隔板 | 淋浴龍頭 | 沖污龍頭 | 除霧鏡 |
|  |  |  |  |  |  |
| 臉盆組 | 浴櫃 | 玻璃平台 | 三角置物盤 | 置物毛巾架 | 毛巾架 |
|  |  |  |  |  | |
| 通風扇 | 嵌燈組 | 插座 | 門組 | 門擋 | |



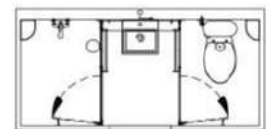
1427 ZK G7F6



1427 ZK G8F6

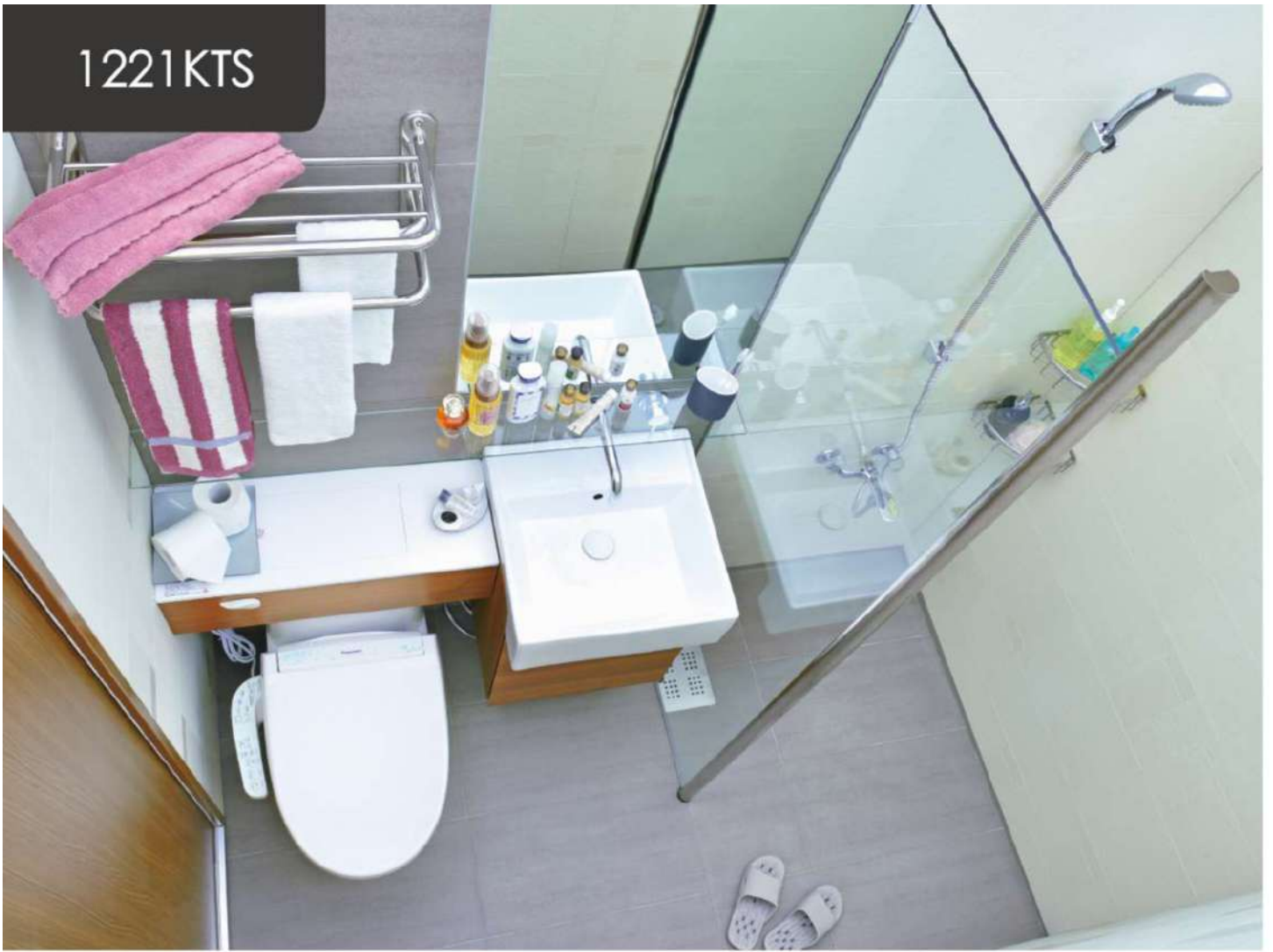


1227 ZK E7F6



1227 ZK E8F6

1221KTS



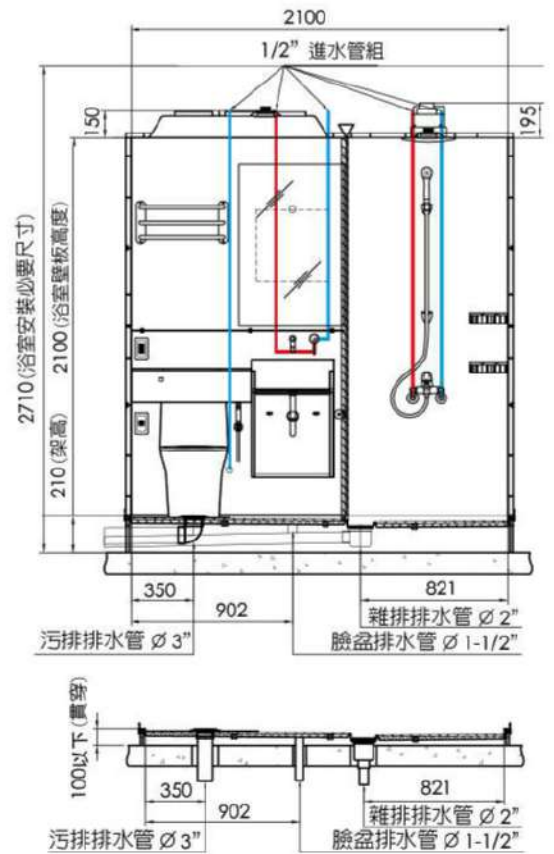
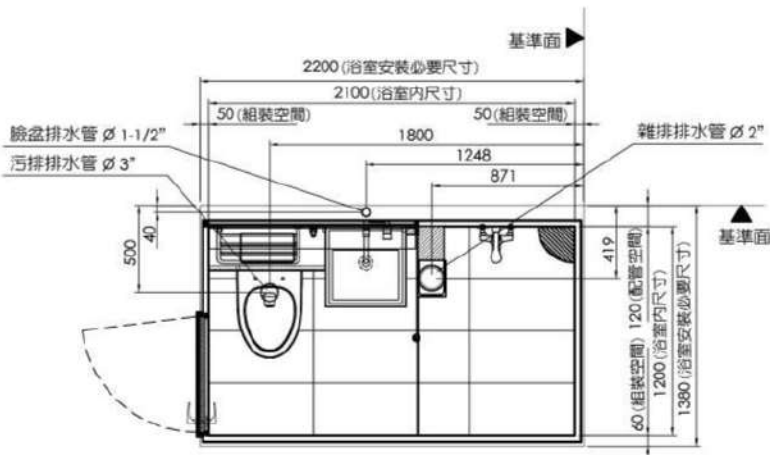
1221KTS

總重量 467kg ± 5%

1221WTS

壁板為全磁磚

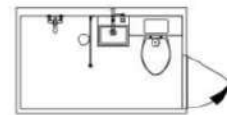
總重量 661kg ± 5%



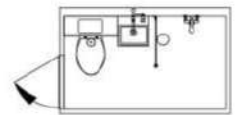


● 浴室模組、色調及磁磚面材以實品銷售為主

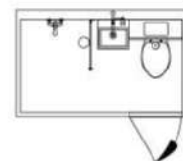
- | | | | | | |
|---|---|---|---|---|---|
|  |  |  |  |  |  |
| 馬桶 | 智能馬桶蓋 | 淋浴玻璃 | 淋浴龍頭 | 沖污龍頭 | 除霧鏡 |
|  |  |  |  |  |  |
| 臉盆組 | 浴槽 | 玻璃平台 | 馬桶平台 | 三角置物盤 | 置物毛巾架 |
|  |  |  |  |  |  |
| 通風扇 | 嵌燈組 | 插座 | 雙插座 | 門組 | 門擋 |



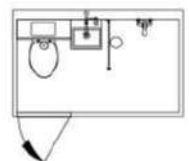
1221 ZK 5406
1221 WU 5406



1221 ZK 53D6
1221 WU 53D6



1221 ZK 5496
1221 WU 5496



1221 ZK 53C6
1221 WU 53C6

1221KTSL



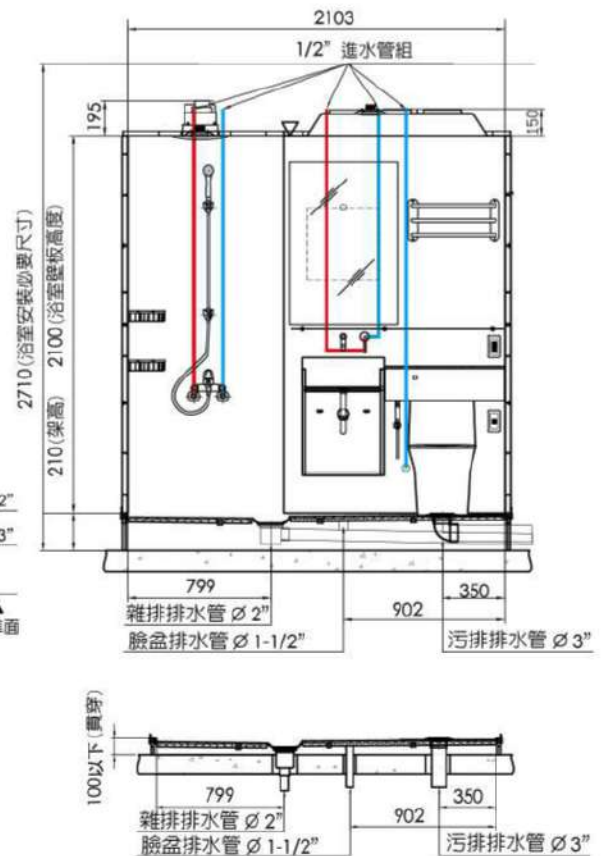
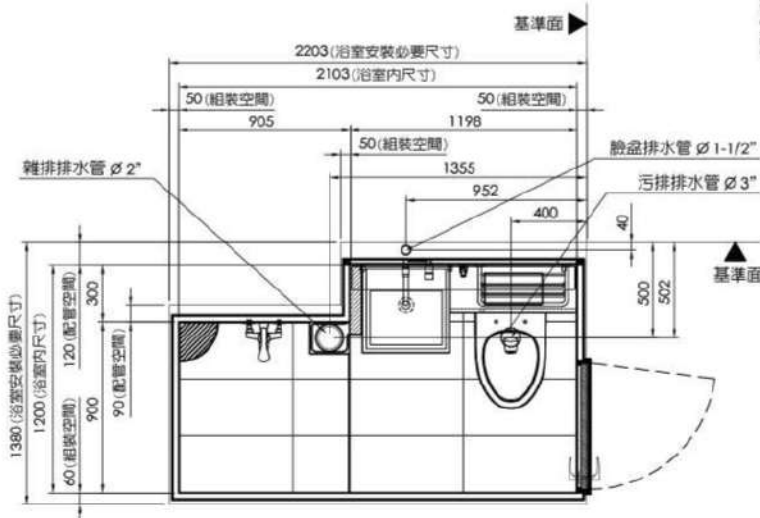
1221KTSL

總重量 406kg ± 5%

1221WTSL

壁板為全磁磚

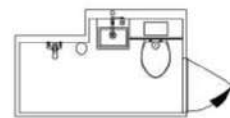
總重量 569kg ± 5%



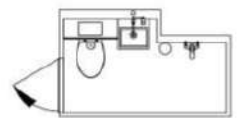


● 浴室模組、色調及磁磚面材以賣品銷售為主

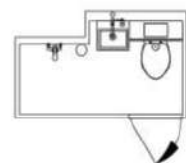
- | | | | | | |
|---|---|---|---|---|---|
|  |  |  |  |  |  |
| 馬桶 | 智能馬桶蓋 | 淋浴龍頭 | 沖污龍頭 | 除霧鏡 | 臉盆組 |
|  |  |  |  |  |  |
| 浴槽 | 玻璃平台 | 馬桶平台 | 三角置物盤 | 置物毛巾架 | 通風扇 |
|  |  |  |  |  | |
| 炭燈組 | 插座 | 雙插座 | 門組 | 門擋 | |



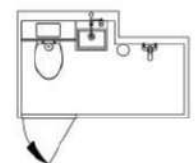
1221 ZK 5206
1221 WU 5206



1221 ZK 51D6
1221 WU 51D6

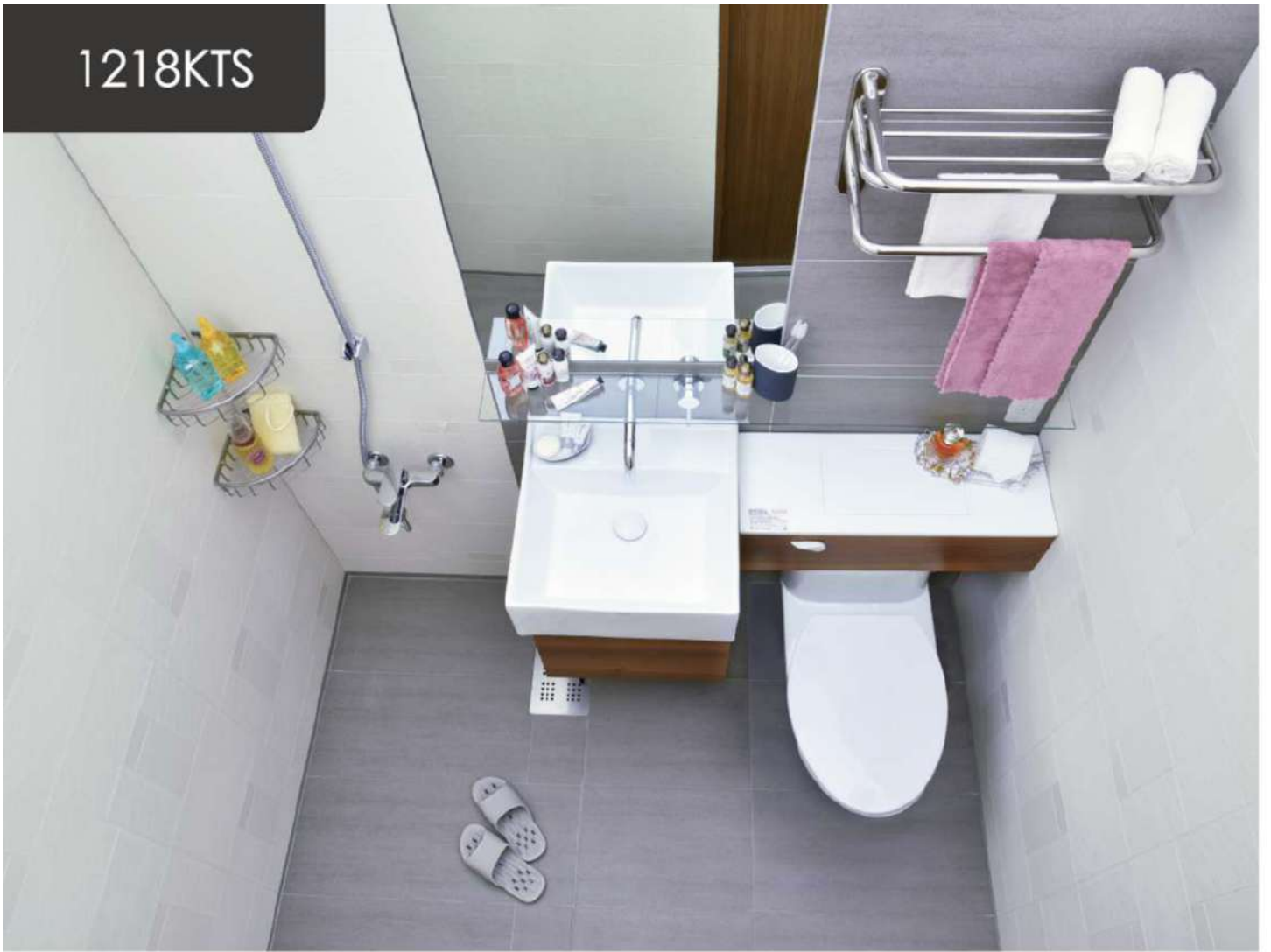


1221 ZK 5296
1221 WU 5296



1221 ZK 51C6
1221 WU 51C6

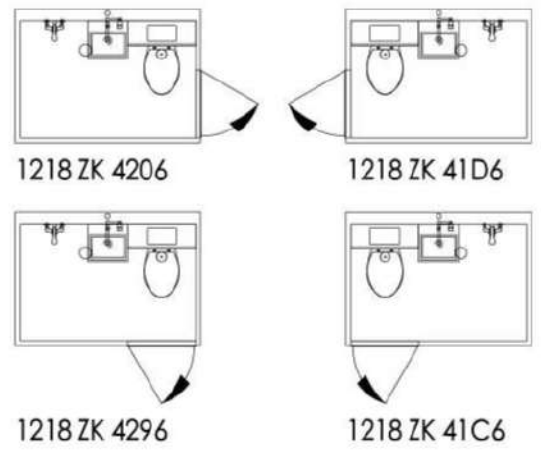
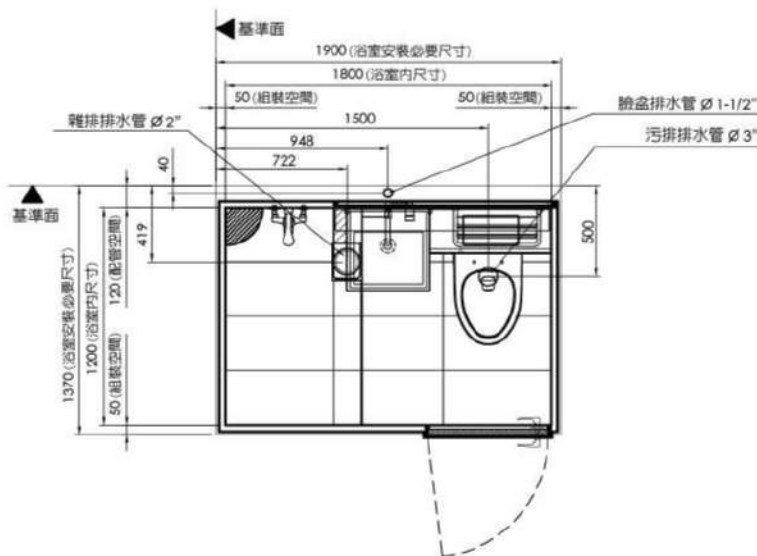
1218KTS



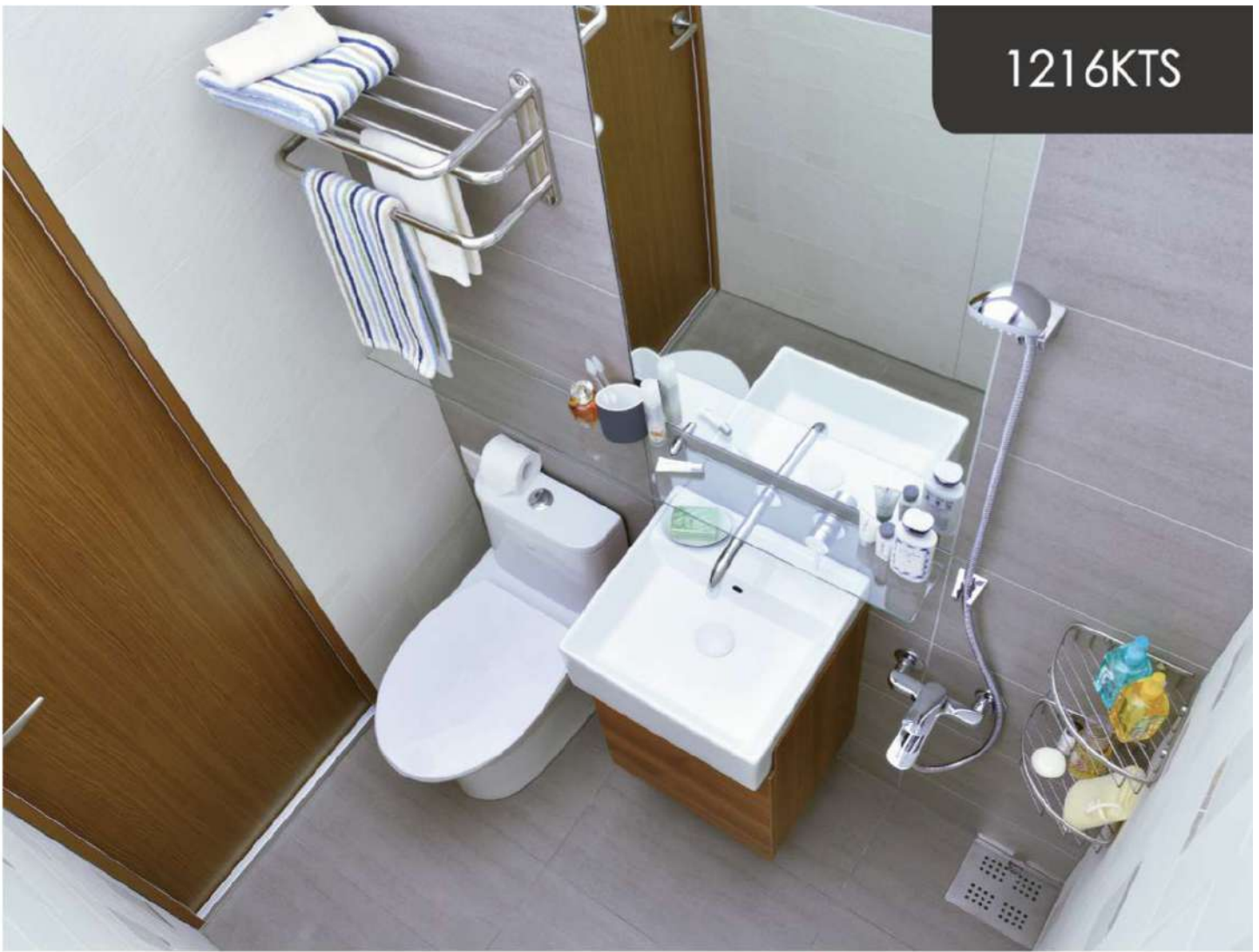
● 浴室模組、色調及磁磚面材以賣品銷售為主

1218KTS

總重量 388kg ± 5%



1216KTS

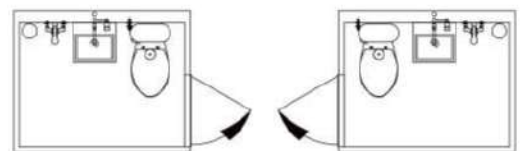
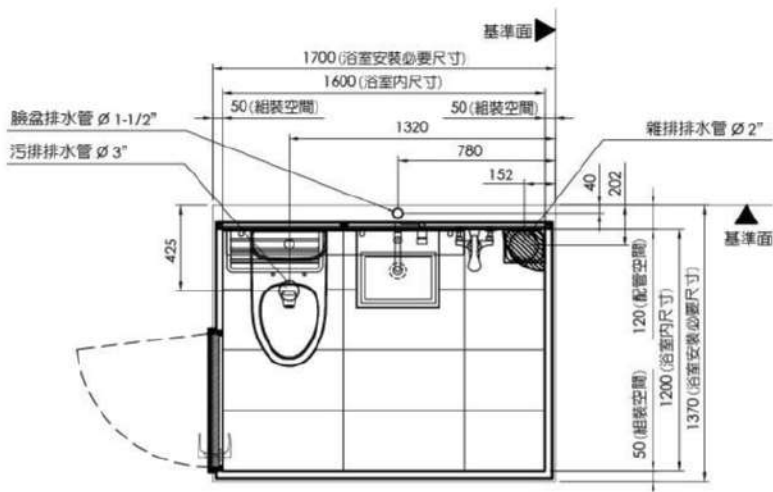


● 浴室模組、色調及磁磚面材以賣品銷售為主

1216KTS

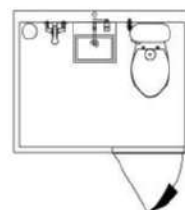
總重量 360kg ± 5%

-  馬桶
-  淋浴龍頭
-  除霧鏡
-  臉盆組
-  浴櫃
-  玻璃平台
-  三角置物盤
-  置物毛巾架
-  通風扇
-  崁燈組
-  插座
-  門組
-  門擋

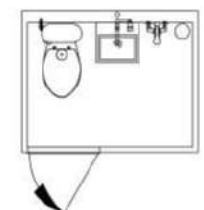


1216 ZK 3206

1216 ZK 31D6

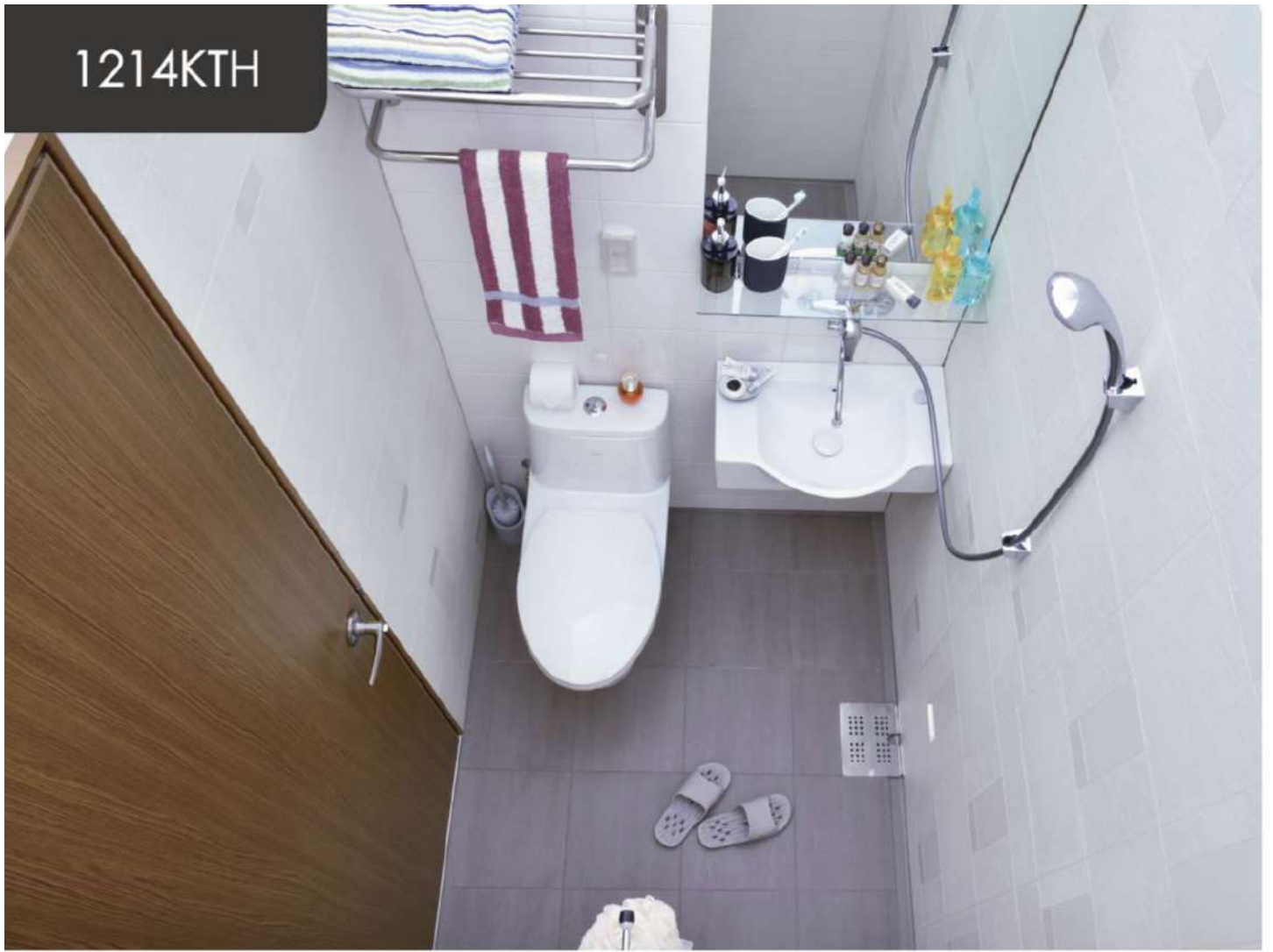


1216 ZK 3296



1216 ZK 31C6

1214KTH



● 浴室模組、色調及磁磚面材以賣品銷售為主

1214KTH

總重量 293kg ± 5%

1014RTH

總重量 214kg ± 5%



馬桶



淋浴龍頭



除霧鏡



臉盆組



玻璃平台



置物毛巾架



通風扇



嵌燈組



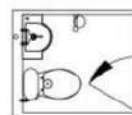
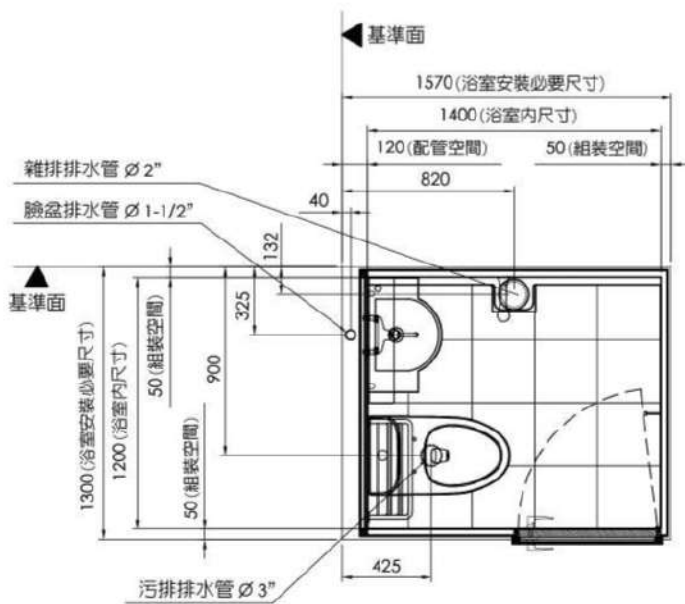
插座



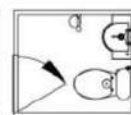
門組



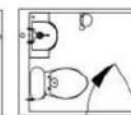
門擋



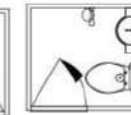
1214 ZK 2A66



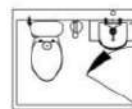
1214 ZK 2B16



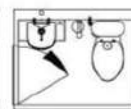
1214 ZK 2A56



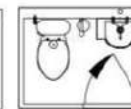
1214 ZK 2B26



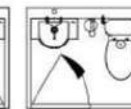
1014 RJ 1A66



1014 RJ 1B16

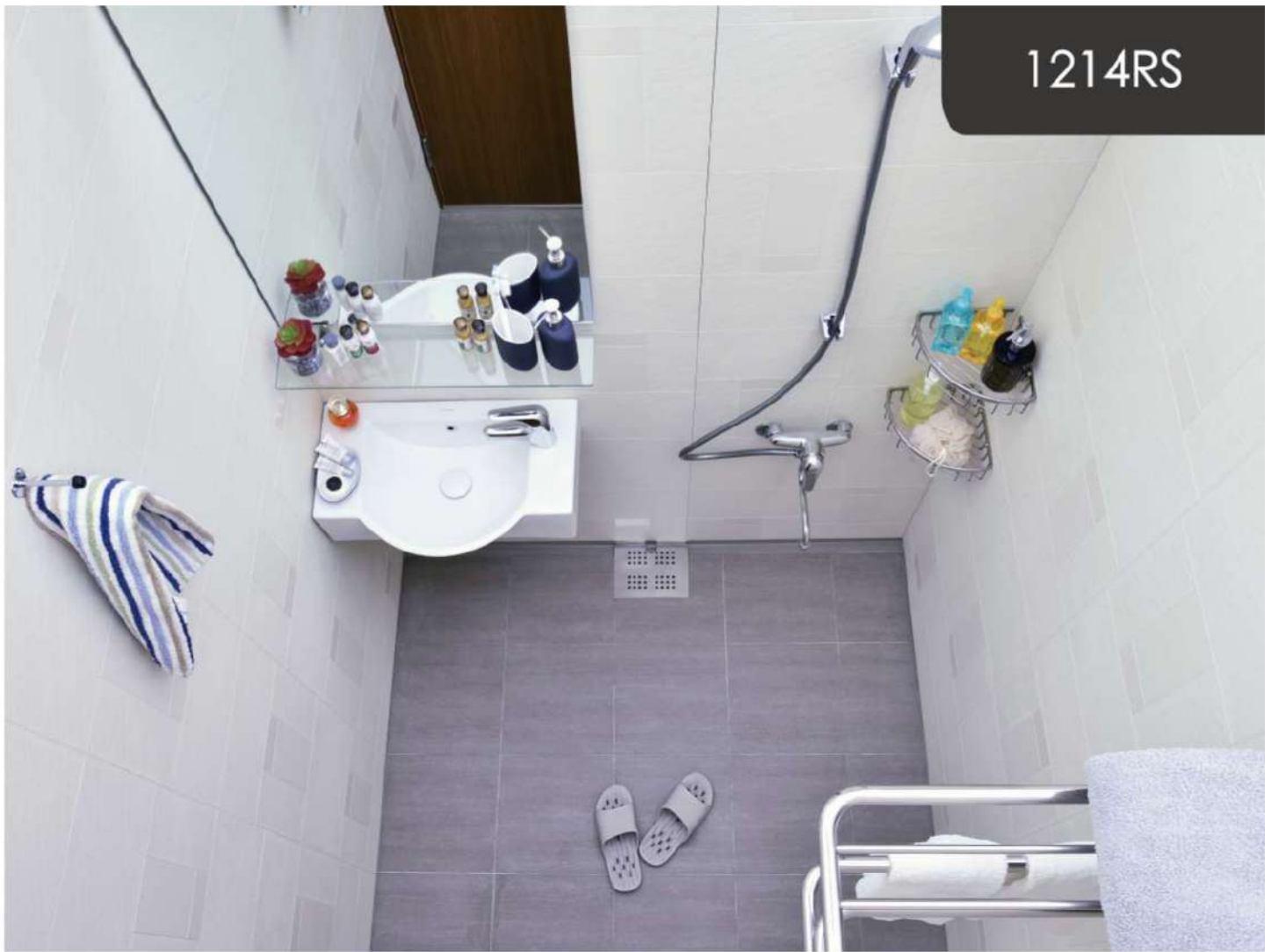


1014 RJ 1A56



1014 RJ 1B26

1214RS



● 浴室模組、色調及磁磚面材以實品銷售為主

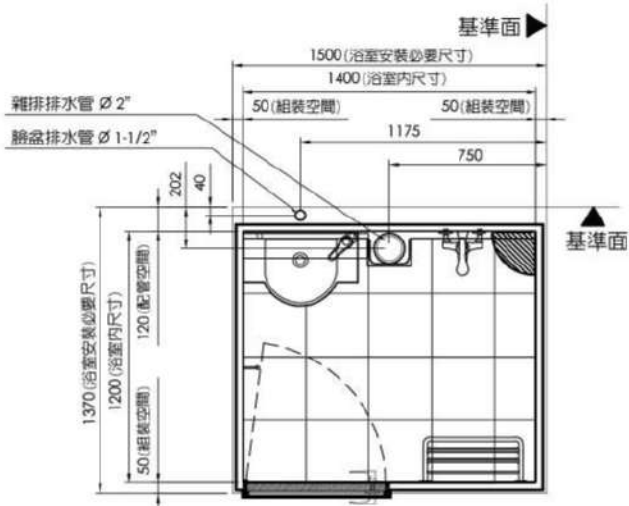
1214RS

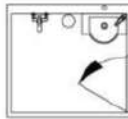
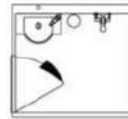
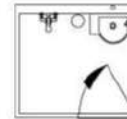
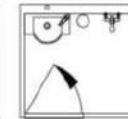
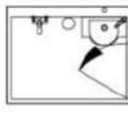
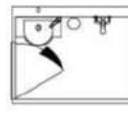
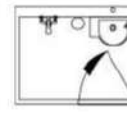
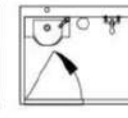
總重量 196kg ± 5%

1014RS

總重量 181kg ± 5%

-  淋浴龍頭
-  除霧鏡
-  臉盆組
-  玻璃平台
-  三角置物盤
-  置物毛巾架
-  通風扇
-  嵌燈組
-  插座
-  門組
-  門擋



- | | | | |
|---|---|---|---|
|  |  |  |  |
| 1214 RJ 2566 | 1214 RJ 2616 | 1214 RJ 2556 | 1214 RJ 2626 |
|  |  |  |  |
| 1014 RJ 1566 | 1014 RJ 1616 | 1014 RJ 1556 | 1014 RJ 1626 |

1925KTTU

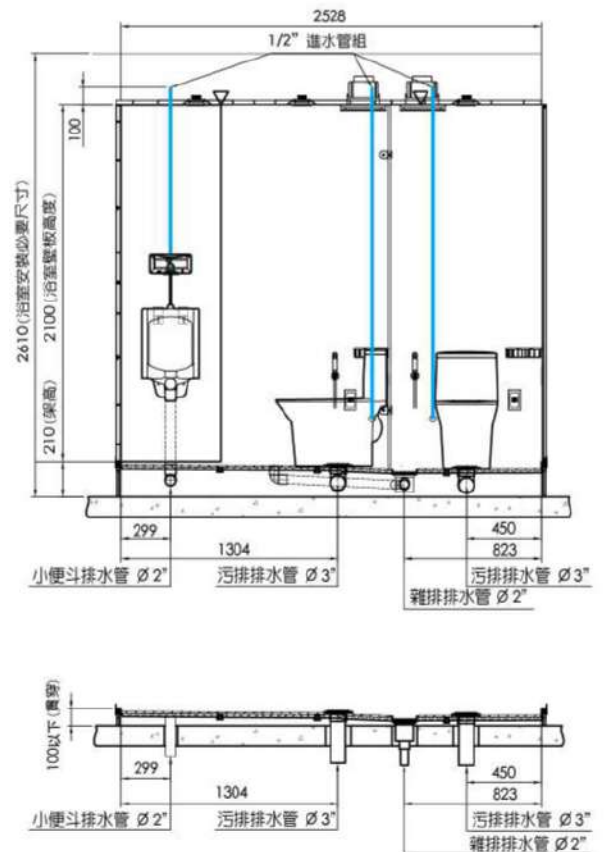
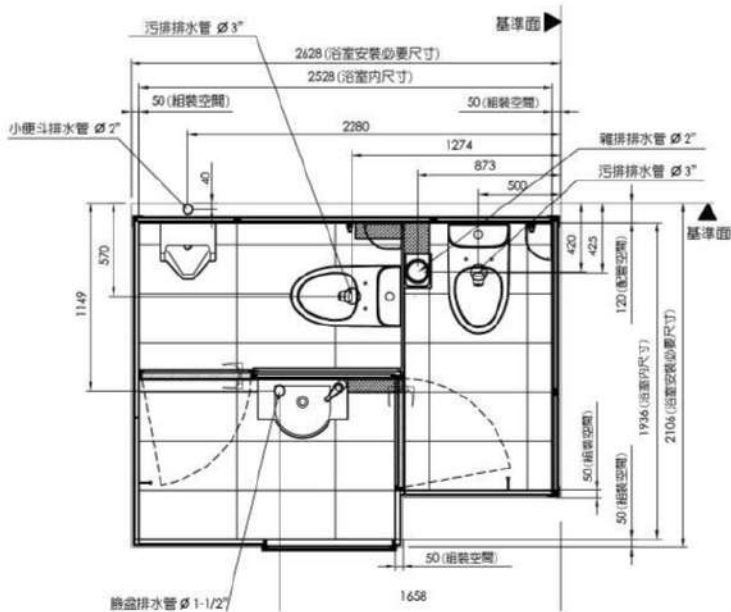


1925KTTU

總重量 795kg ± 5%

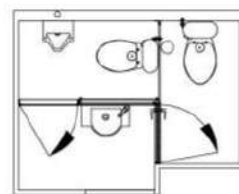
1925KTUU

總重量 776kg ± 5%

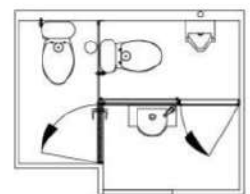




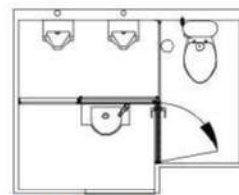
● 浴室模組、色調及磁磚面材以實品銷售為主



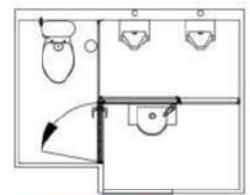
1925 ZK H1Z4



1925 ZK H2Z4



1925 ZK H3Z4



1925 ZK H4Z4

1427.1227K



1427

1427KTT
馬桶型



1427 ZK G1F6
總重量 724g ± 5%

總重量

1227

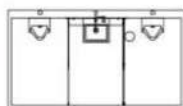
1227KTT
馬桶型



1227 ZK E1F6
總重量 615kg ± 5%

總重量

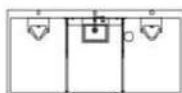
1427KUU
小便斗型



1427 ZK G3F6
總重量 665kg ± 5%

總重量

1227KUU
小便斗型



1227 ZK E3F6
總重量 578kg ± 5%

總重量

1427KTU
馬桶 +
小便斗型



1427 ZK G5F6
總重量 693kg ± 5%

總重量

1227KTU
馬桶 +
小便斗型

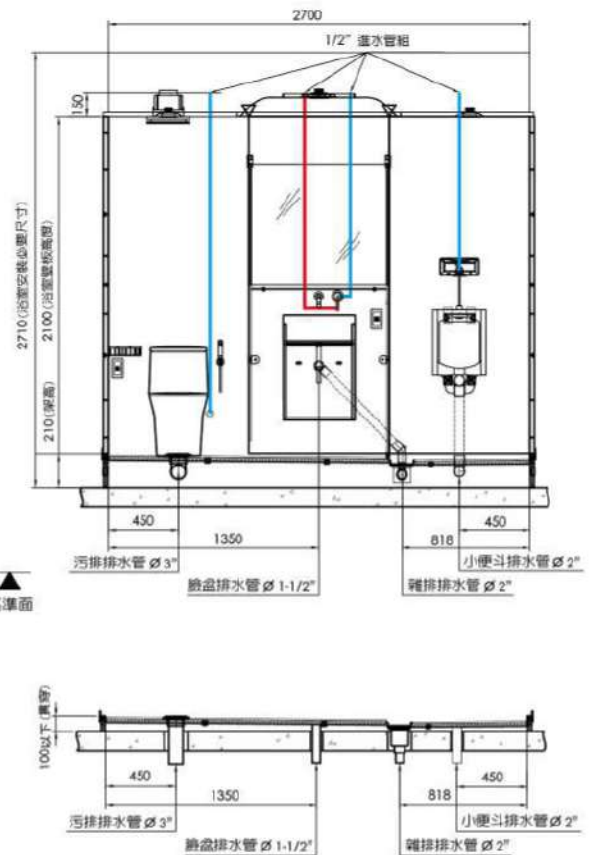
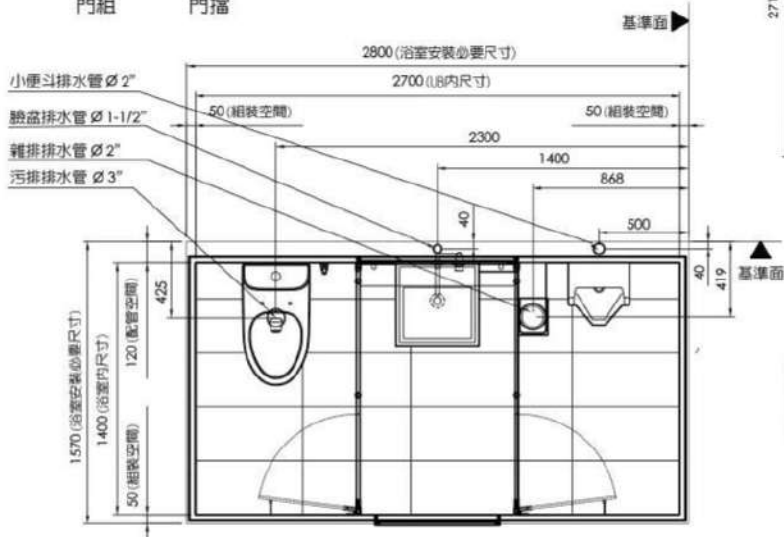


1227 ZK E5F6
總重量 598kg ± 5%

總重量



● 浴室模組、色調及磁磚面材以實品銷售為主



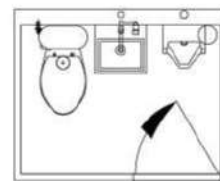
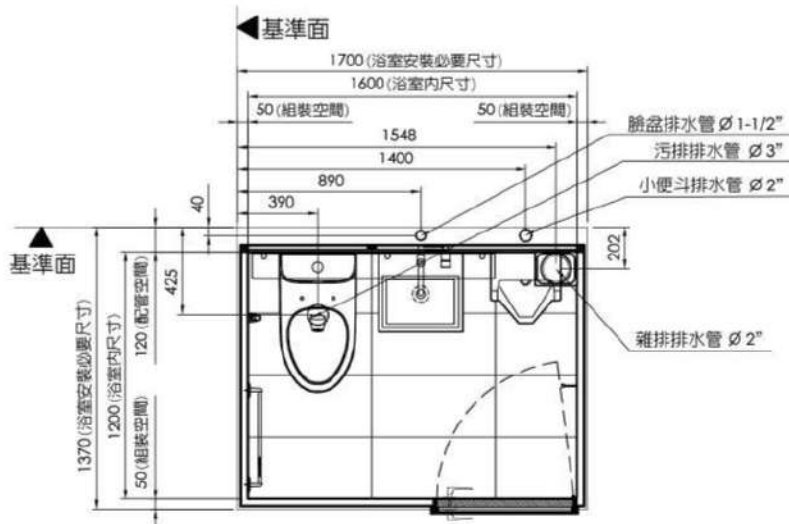
1216KTU



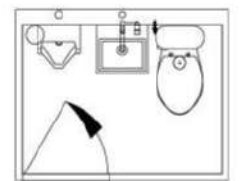
● 浴室模組、色調及磁磚面材以賣品銷售為主

1216KTU

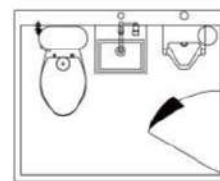
總重量 385kg ± 5%



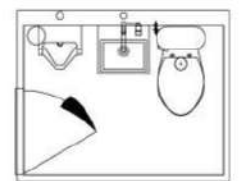
1216 ZK 3756



1216 ZK 3826



1216 ZK 3766



1216 ZK 3816

1214RTU



● 浴室模組、色調及磁磚面材以實品銷售為主

1214RT

馬桶型

總重量 229kg ± 5%

1214RU

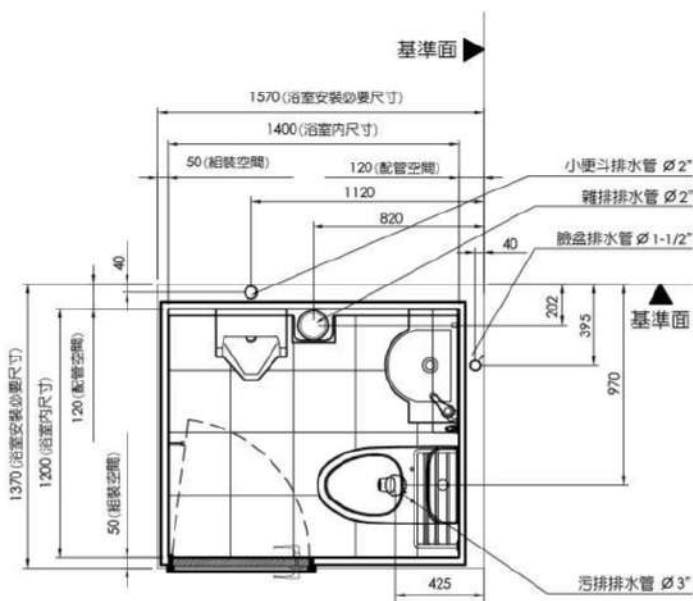
小便斗型

總重量 213kg ± 5%

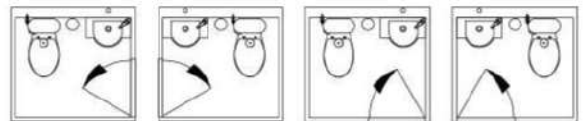
1214RTU

馬桶+小便斗型

總重量 255kg ± 5%



1214RT



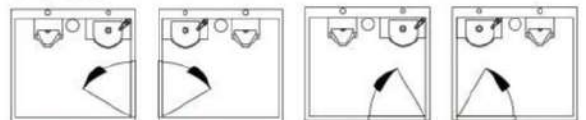
1214 RJ 2166

1214 RJ 2216

1214 RJ 2156

1214 RJ 2226

1214RU



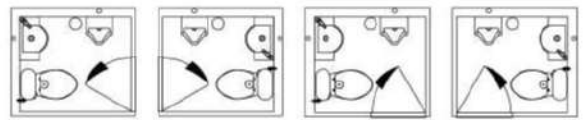
1214 RJ 2366

1214 RJ 2416

1214 RJ 2356

1214 RJ 2426

1214RTU



1214 RJ 2766

1214 RJ 2816

1214 RJ 2756

1214 RJ 2826

1014RT



● 浴室模組、色調及磁磚面材以賣品銷售為主

1014RT

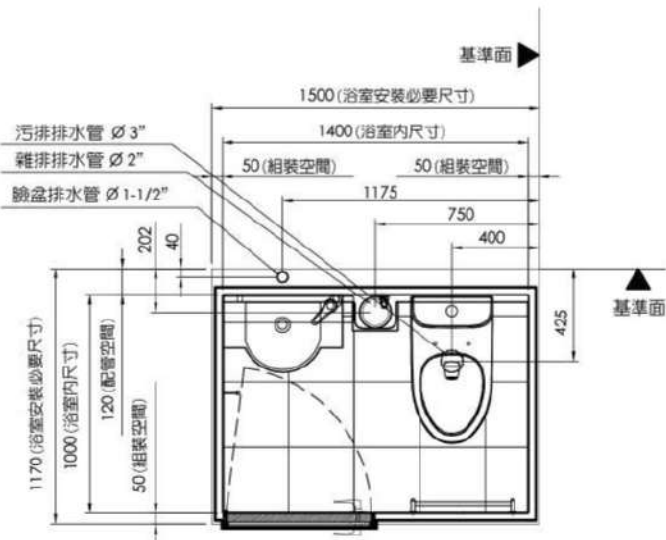
馬桶型

總重量 216kg ± 5%

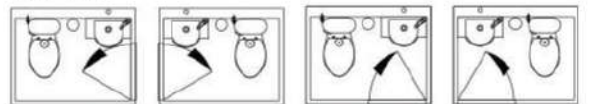
1014RU

小便斗型

總重量 196kg ± 5%

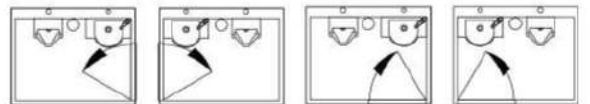


1014RT



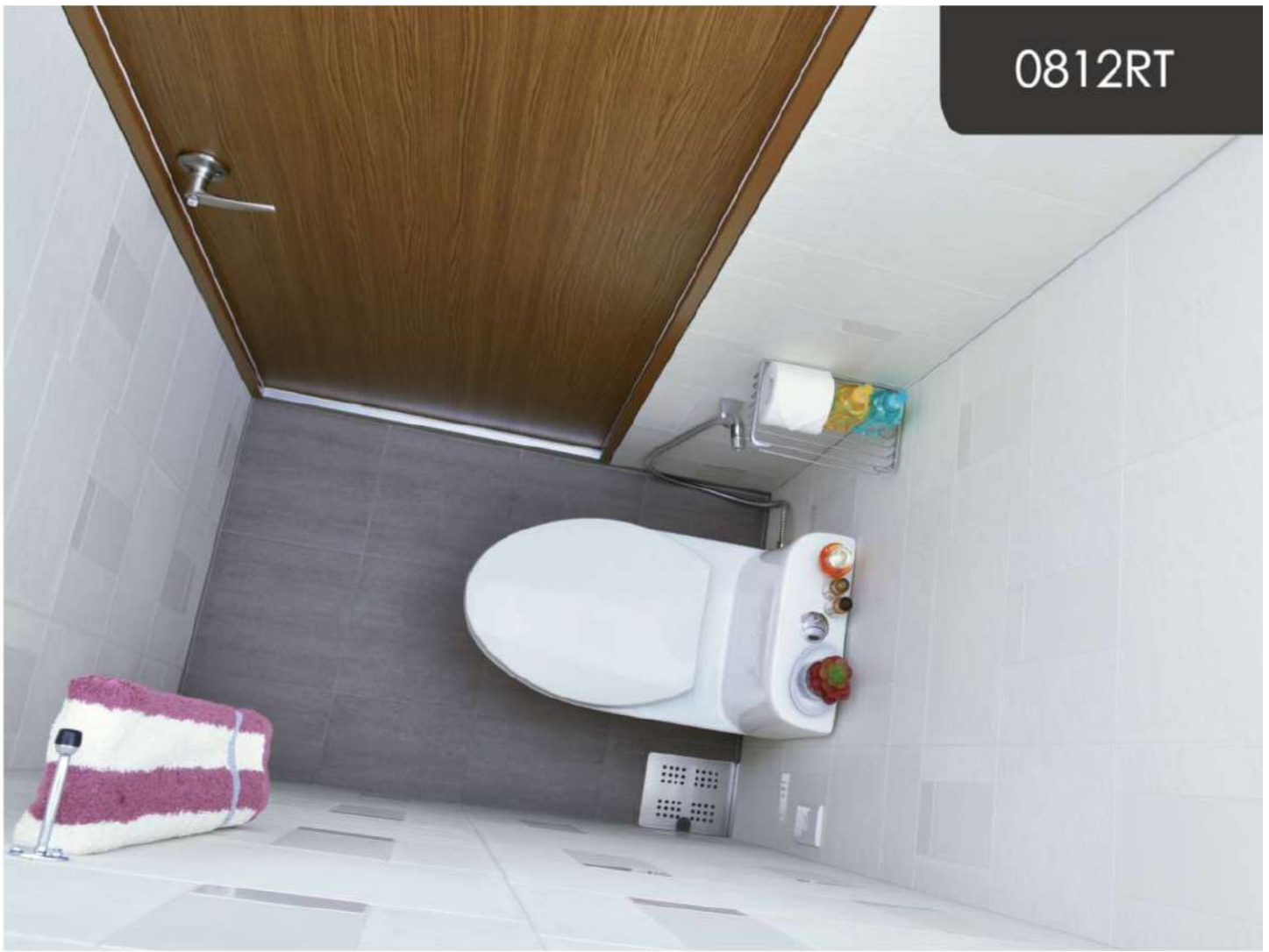
1014 RJ 1166 1014 RJ 1216 1014 RJ 1156 1014 RJ 1226

1014RU



1014 RJ 1366 1014 RJ 1416 1014 RJ 1356 1014 RJ 1426

0812RT



● 浴室模組、色調及磁磚面材以實品銷售為主

0812RT

總重量 165kg ± 5%



馬桶



沖污龍頭



置物盤



通風扇



嵌燈組



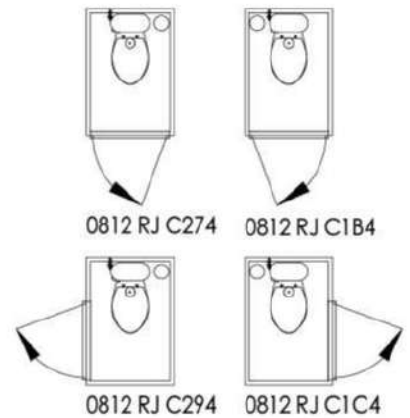
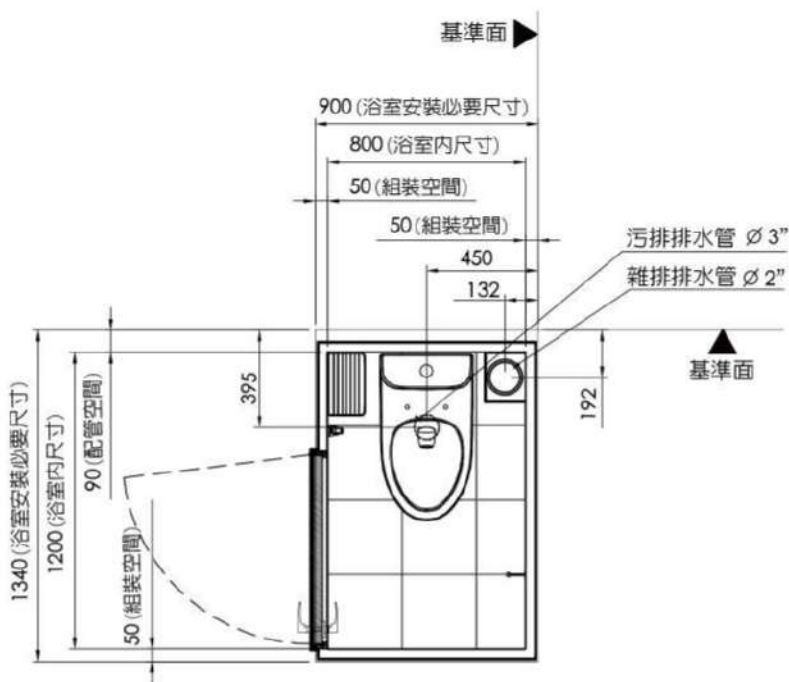
插座



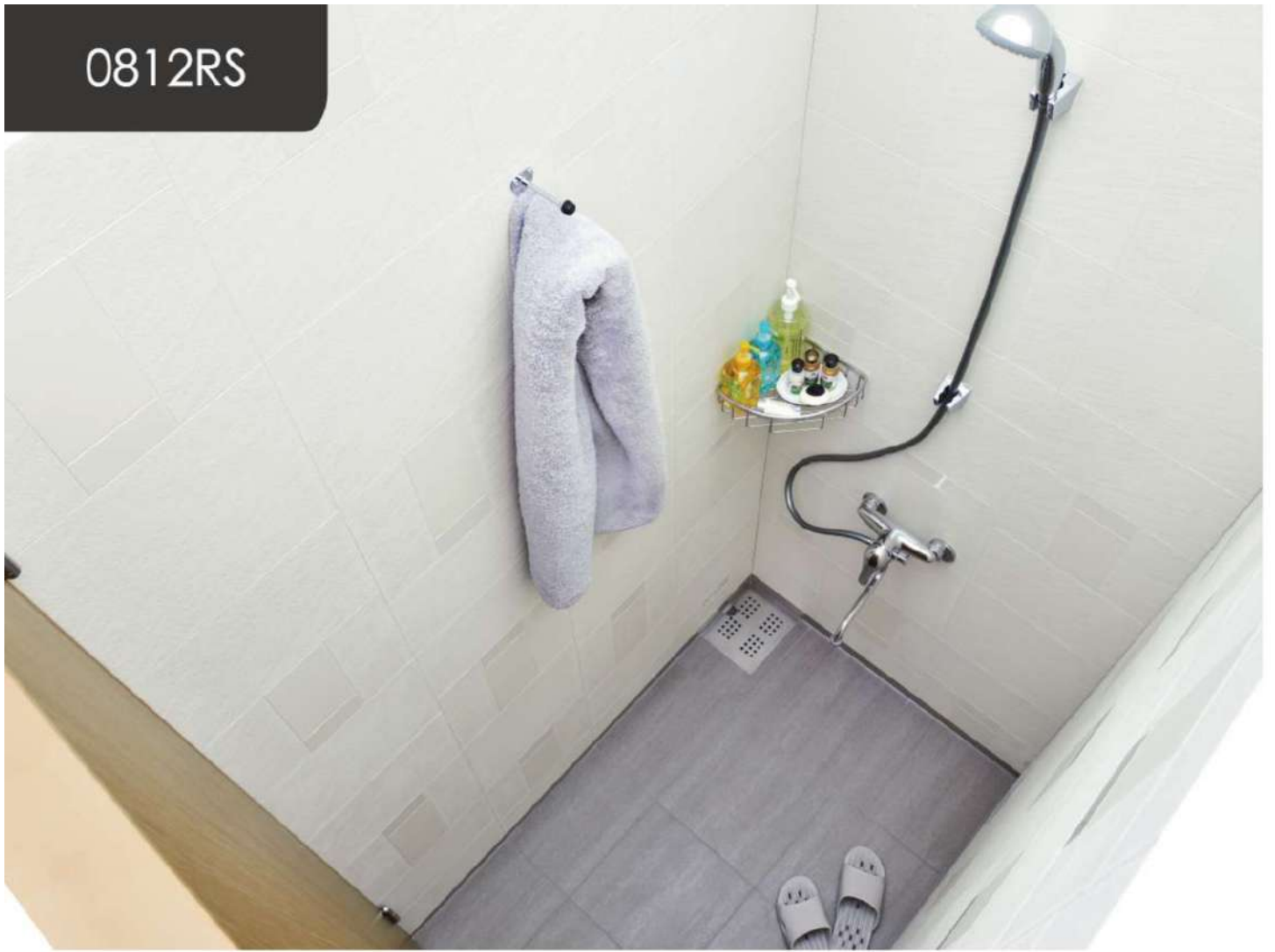
門組



門擋



0812RS

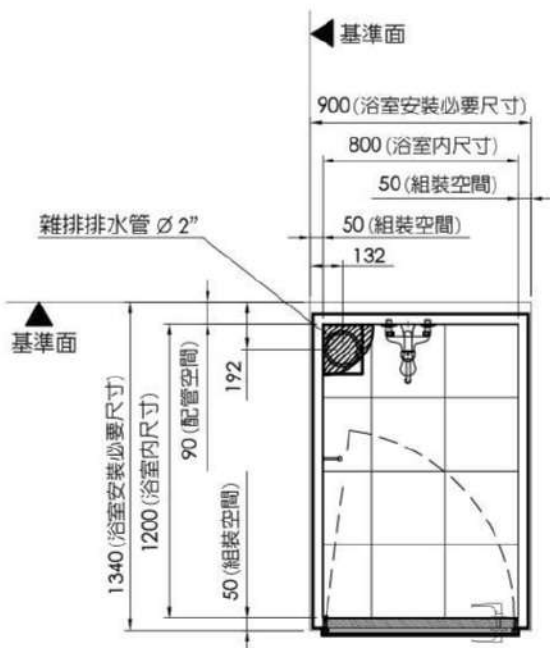






● 浴室模組、色調及磁磚面材以賣品銷售為主

0812RS

總重量 128kg ± %

- 
 淋浴龍頭
- 
 三角置物盤
- 
 通風扇
- 
 炭燈組
- 
 門組
- 
 門擋



- 
 0812 RJ C654
- 
 0812 RJ C524
- 
 0812 RJ C614
- 
 0812 RJ C564



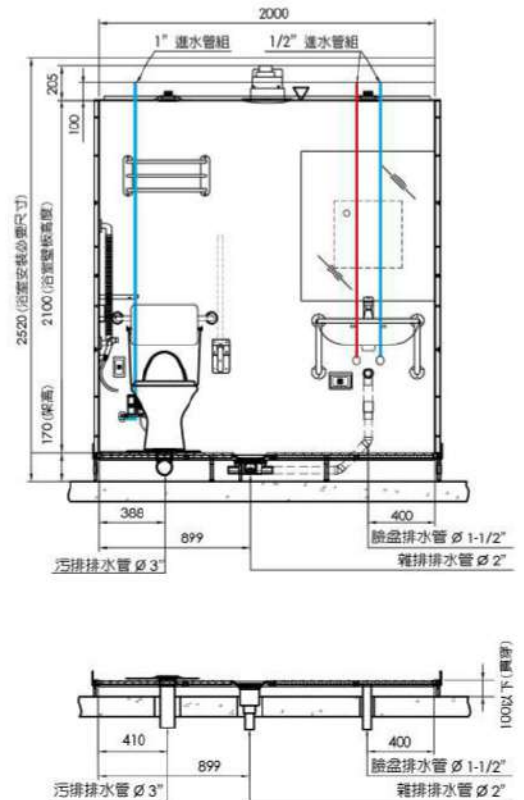
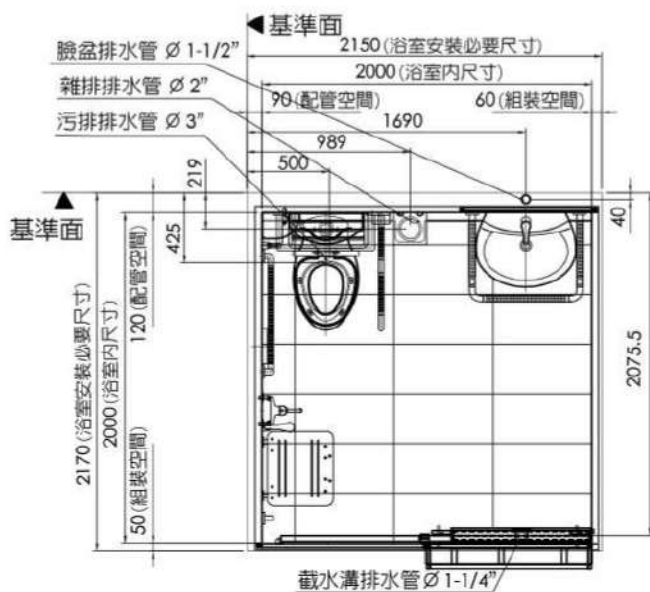
● 浴室模組、色調及磁磚面材以實品銷售為主

2020KTS

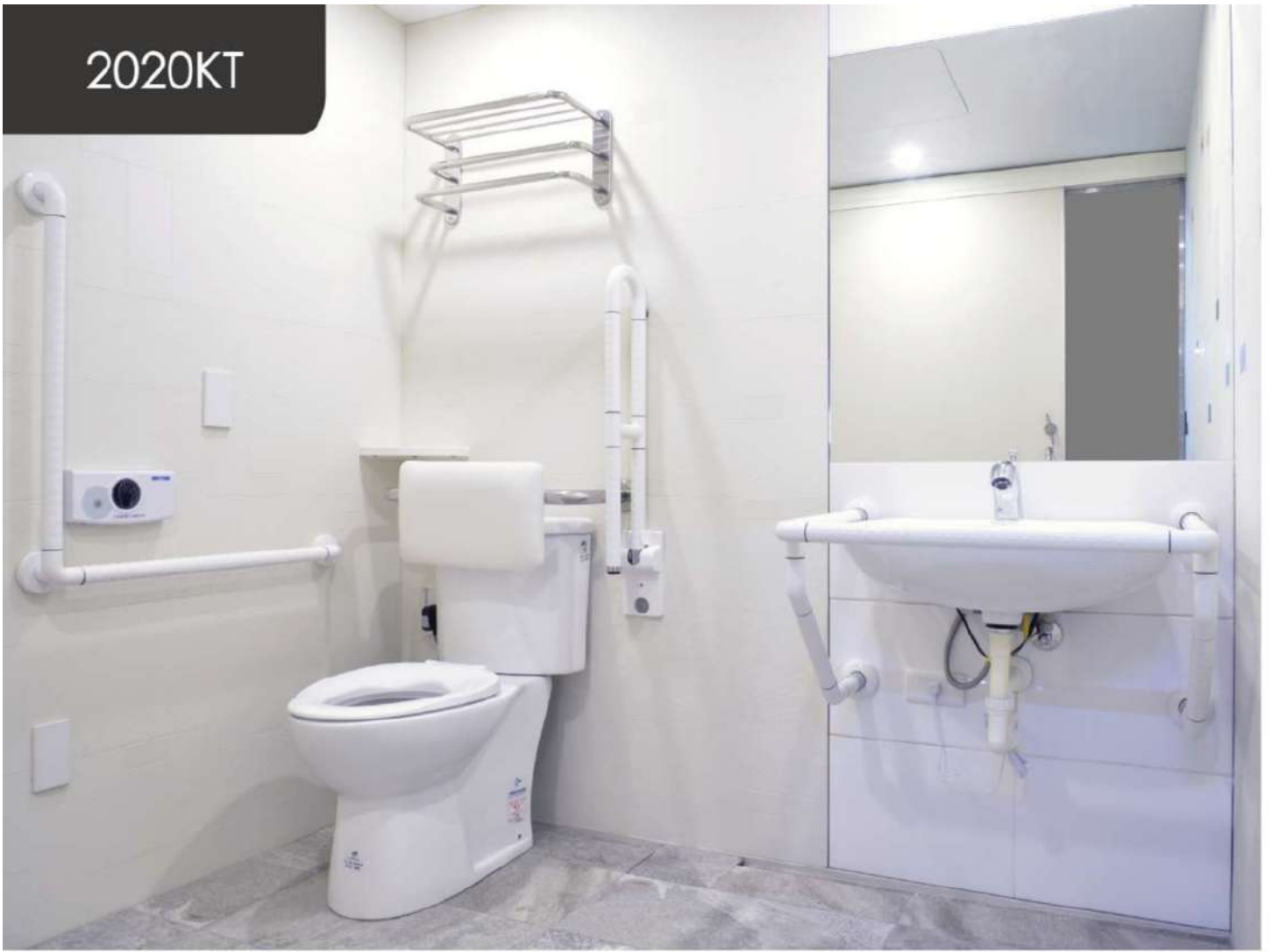
總重量 516kg ± 5%

2020KT

總重量 525kg ± 5%

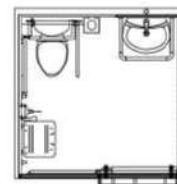


2020KT

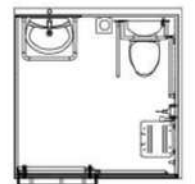


● 浴室模組、色調及磁磚面材以實品銷售為主

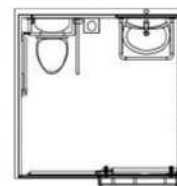
- | | | | | | |
|---|--|---|---|---|---|
|  |  |  |  |  |  |
| 馬桶 | 臉盆組 | 淋浴龍頭 | 除霧鏡 | 置物毛巾架 | 扶手 |
|  |  |  |  |  |  |
| 淋浴椅 | 安全鈴孔 | 通風扇 | 嵌燈組 | 插座 | 門組 |
- KTS: 單槍冷熱混合龍頭
KT: 感應冷水龍頭



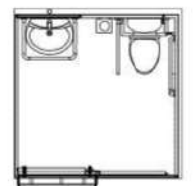
2020 ZK DEE4



2020 ZK DFE4



2020 ZK DJE4



2020 ZK DKE4



無障礙設計

靈活應用於住家
醫院或公共建設

**150公分直徑
輪椅迴轉空間**

**感壓式自動
沖水馬桶座椅**

友善無障礙使用

**特殊設計
淋浴折疊椅**

安全防跌



L型抗菌扶手



U型抗菌扶手



安全指示鉤鎖



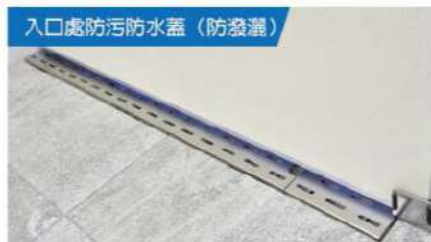
感應式無障礙馬桶座



安全洗手台



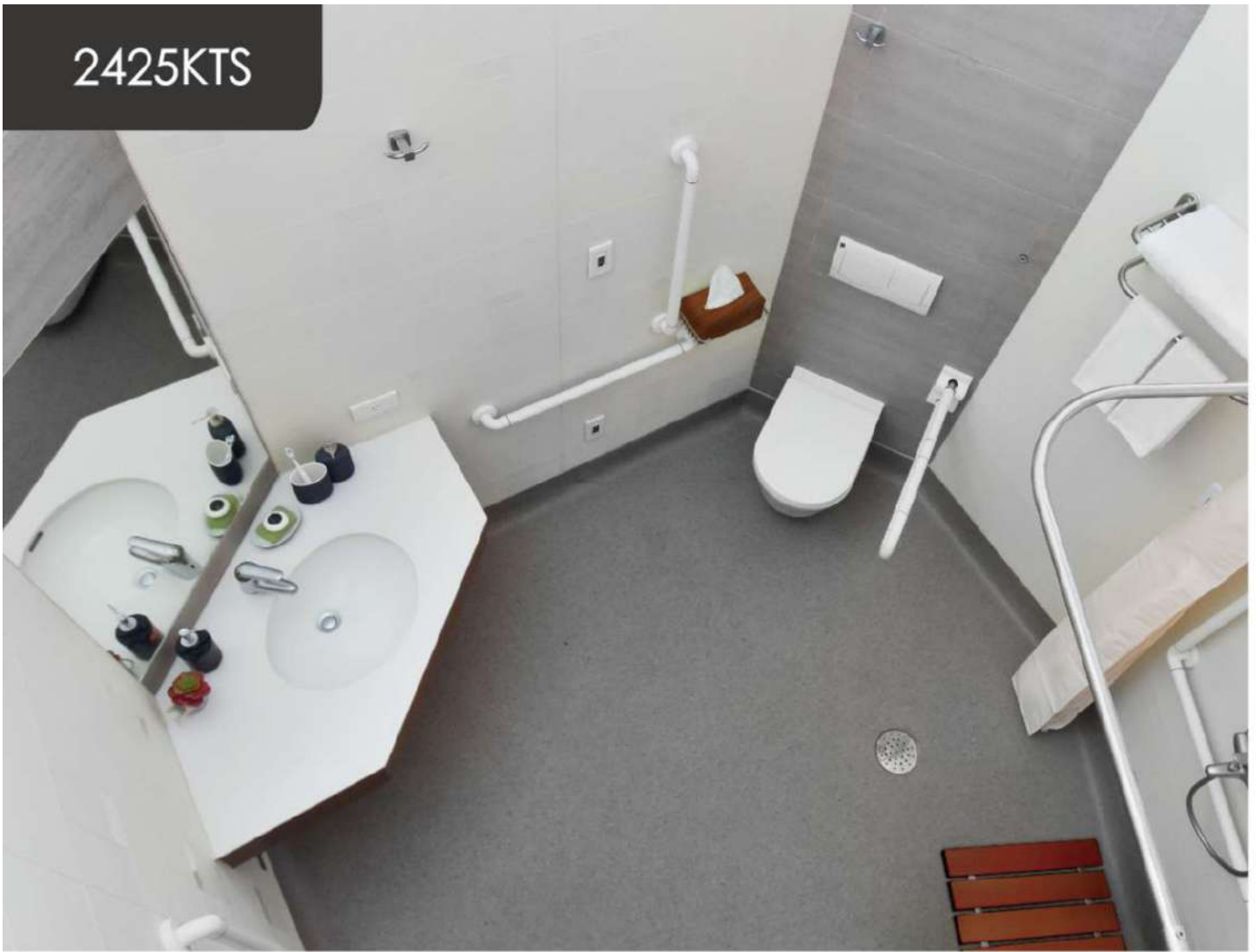
安全淋浴折疊椅



入口處防污防水蓋 (防發濺)



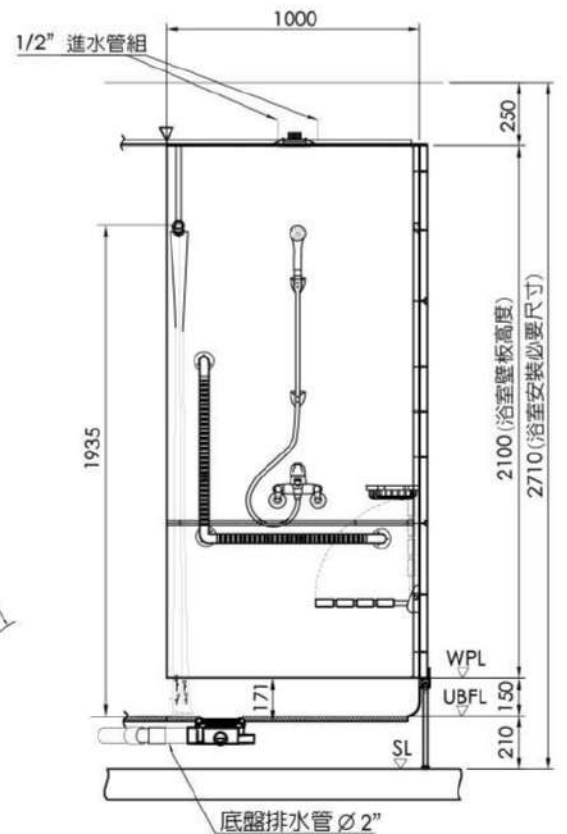
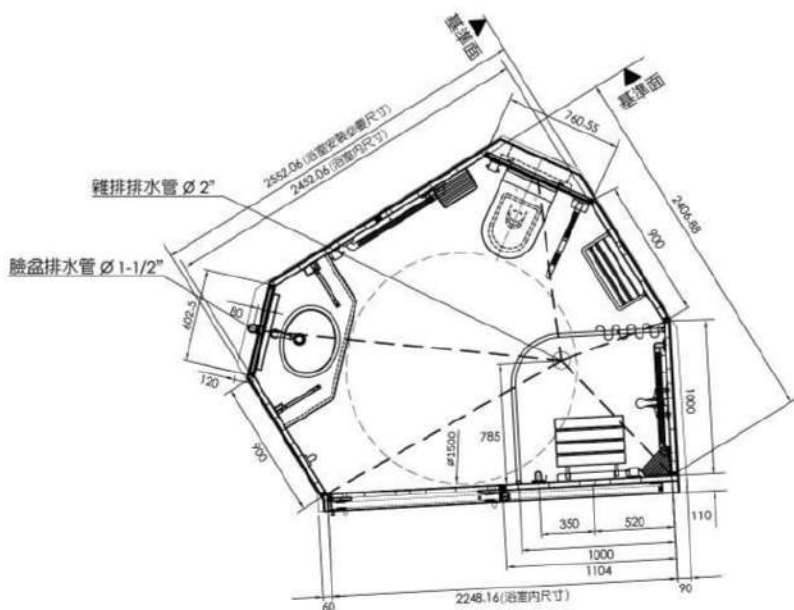
2425KTS



● 浴室模組、色調及磁磚面材以賣品銷售為主

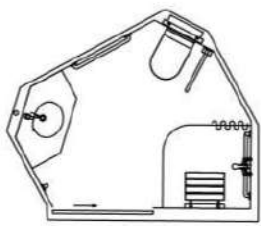
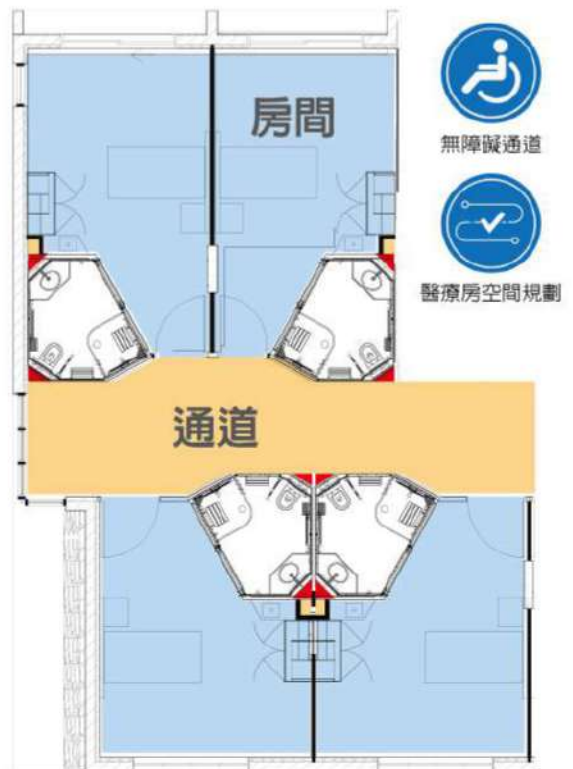
2425KTS

總重量 633kg ± 5%

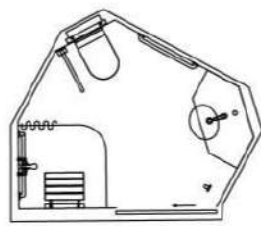




醫療房專用



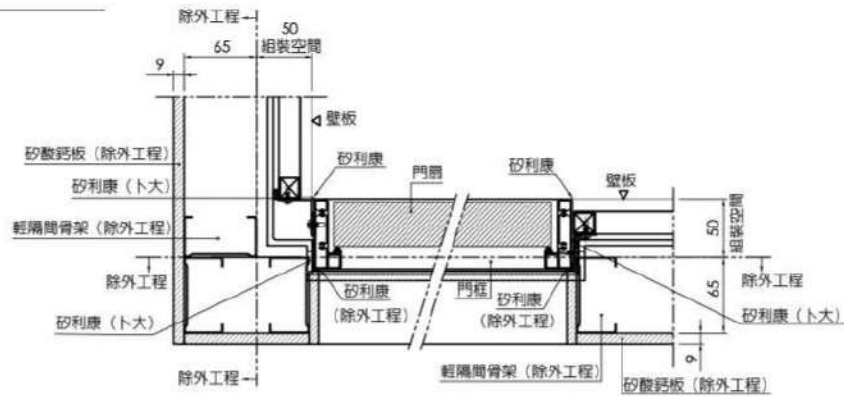
2425 ZK J2E4



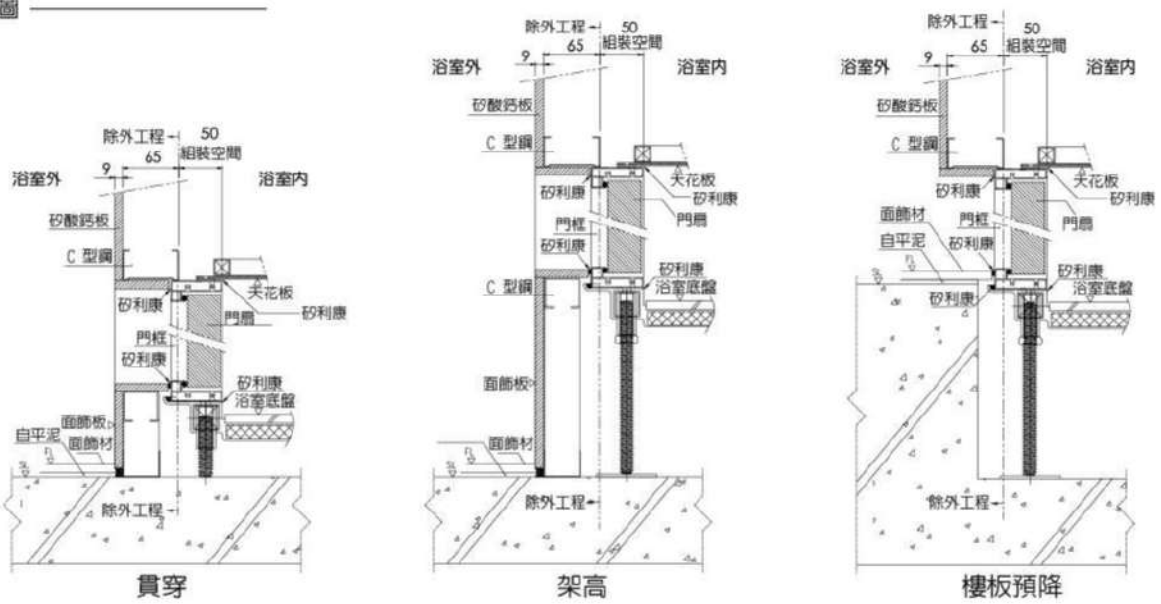
2425 ZK J1E4

60公分門框&輕隔間收尾

上視圖

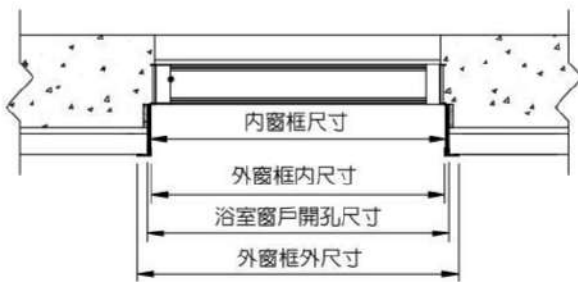


斷面圖



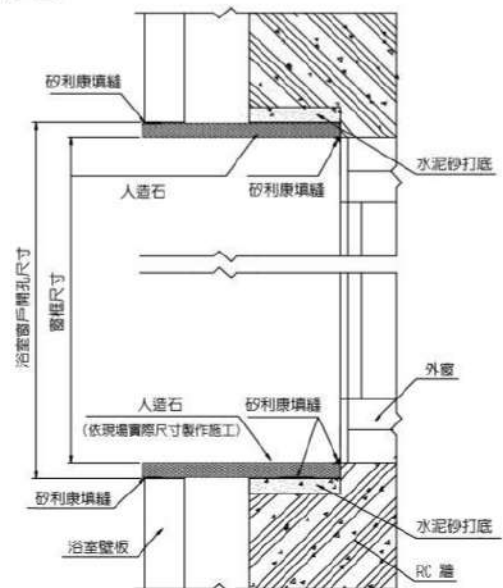
窗戶收尾

上視圖



門框材質可為鋁材、木材、塑料、天然石材、人造石及不鏽鋼等

斷面圖



施工介面

給水責任分界點

浴室天花板上100mm，預留1/2"(4分)接頭，水電商負責整體浴室至管道間管路銜接工程。

配電責任分界點

電線預留至浴室天花板上之接線盒，水電商負責漏電斷路器、外部電源線拉至接線盒內之迴路配置及配線銜接工程。

排風扇

通風扇出口處起軟管及銜接由水電商施工。

排水責任分界點

管路預留至浴室外部100mm或貫穿樓板以下100mm，水電商負責整體浴室至管道間管路銜接工程。

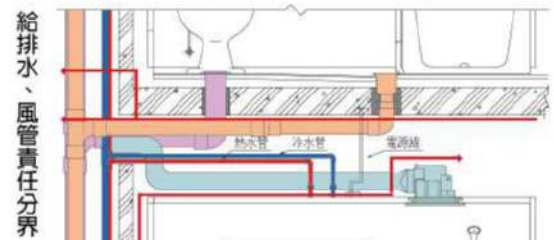
整體室內之開窗收尾及外部之裝潢工程由客戶自行負責。

■ 冷水管 ■ 熱水管 ■ 雜排水管 ■ 污排水管 ■ 排氣管

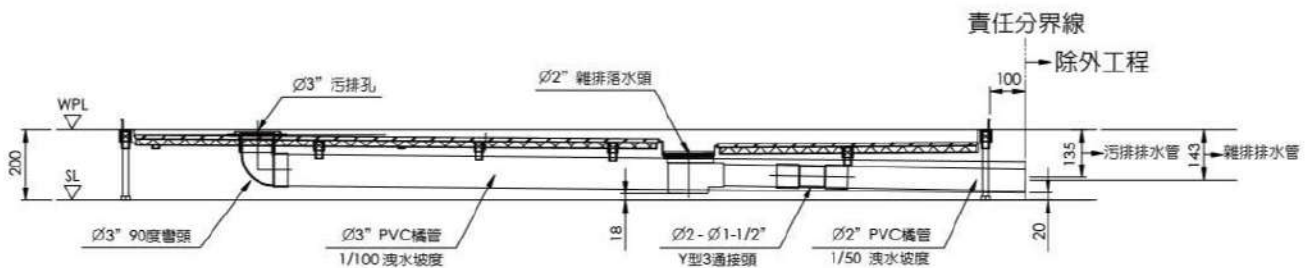
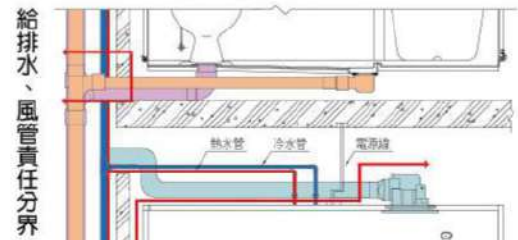
➔ 除外工程 (給排水、風管責任分界)

⚠ 浴室責任界面不含外水電及裝潢

樓板排水型 (貫穿)



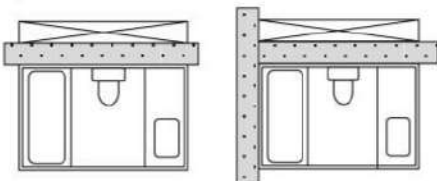
同層排水型 (架高)



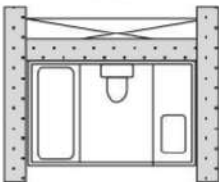
設計施工注意事項

安裝工序

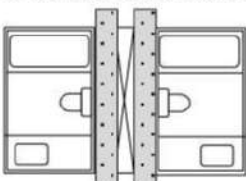
1 浴室或輕隔間二擇一先行安裝



2 整體浴室需先安裝



3 先完成管道間輕隔間後，再安裝整體浴



施工注意

需由專人實地丈量工地浴室尺寸，以確認能使用之整體浴室型式。

需由專人實地確認整體浴室之搬運路線空間是否足夠，以確認是否適合整體浴室的採用。

翻修浴室時，需移除原浴室門側之牆，以利整體浴室的組裝。

冷熱水壓要求

採用附有蓮蓬頭開關之整體浴室，供水壓和熱水壓必須都要在0.5kg-f/cm²以上，如果使用瞬間熱水器供應熱水壓太高時，需加裝錘防止器。

排水管

確認使用整體浴室時，排水坡度、路徑要做好規劃。

特殊地區之使用注意

溫泉地帶因水質關係，內含硫磺化學成分，對於五金銅器產生不良變化後果，設計時，也因考慮現實狀況做適當的調整。

電器配線(內線規定)按法規處理

浴室內不可裝設電器配線，如有安裝時，期配線迴路必須設有高速感應度型之漏電切斷器(定額感度電流15A以下)及絕緣變壓器(定額容量3KVA以下)，此部分為買方必要施作工程。

無障礙空間設計

無障礙空間設計，建議預降樓板7公分以上。

