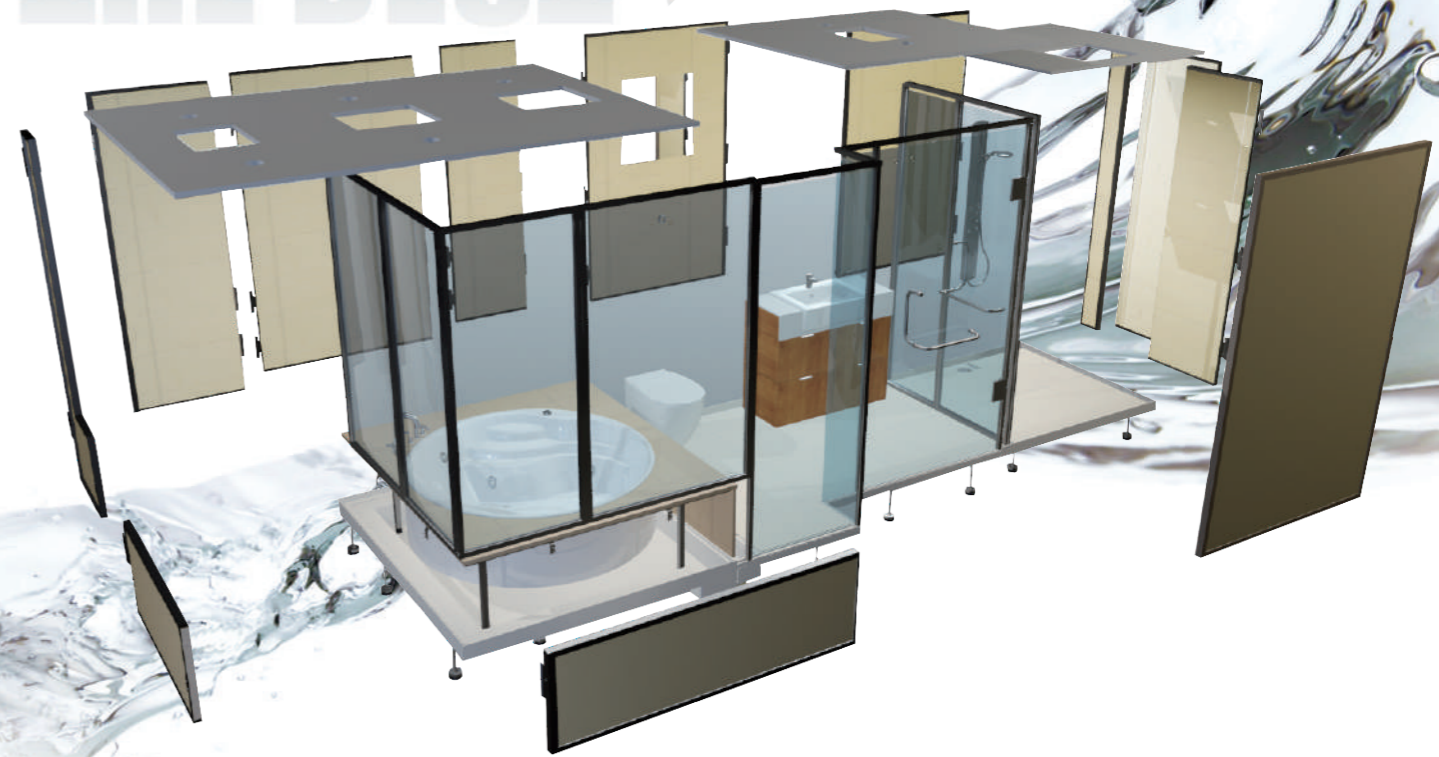


# THE BEST OF UNIT BATHROOM

# THE BEST OF UNIT BATHROOM



**PUDA** 卜大整體浴室

通過 ISO 9001 國際標準

免費服務專線：0800-046288

ISO9001  
2008



台証字第7328號

**PUDA** 卜大整體浴室

通過 ISO 9001 國際標準

[www.puda.com.tw](http://www.puda.com.tw)

【櫻花企業團】卜大實業股份有限公司 PUDA Industrial Co., Ltd.

台中市清水區海風里和睦路二段118號 No.118, Sec 2, Hemu Rd., Qingshui Dist, Taichung, 43641, Taiwan, R.O.C  
TEL : 04-2620-0288 FAX : 04-26200188 E-mail: puda@puda.com.tw Web site:www.puda.com.tw

台北營業所 / 新北市汐止區南陽街88號4F  
TEL:02-86951828 FAX:02-86951331

台中營業所 / 台中市清水區海風里和睦路二段118號  
TEL: 04-2620-0288 FAX: 04-2620-0188

高雄營業所 / 高雄市大寮區永芳村萬丹路271號  
TEL:07-7812669 FAX:07-7812698

花東營業所 / 花蓮縣吉安鄉中山路一段222號4樓之8  
TEL : 03-8540724

# Philosophy



## 成為亞太地區整體浴室客製化的專家。 Become an expert of customized unit bathrooms in Asia.



### 頂真 (Seriousness)

100-1=0, 1% 的疏忽錯誤就是100% 的系統失敗，一絲不苟、精益求精，細節成就完美。  
 100-1 = 0, only 1% negligence of the error means 100% system failure,  
 Meticulous, constant improving, focusing on details to accomplish perfection.

### 創新 (Innovation)

人無我有、人有我優、人優我精、人精我創，從各種技術創新轉為價值創新  
 What we have others don't.  
 What others have we have surpass  
 If people are gifted at something, then we mater it.  
 If people master something, we will create and lead.  
 Transfer from a variety of technological innovation into value innovation.

### 簡單 (Simplify)

簡單就是偉大，用科學方法PDCA，化繁為簡、化簡為易、化易為趣、追求節拍化  
 Simplicity is great.  
 By scientific PDCA method,  
 we simplify difficult things to make them interesting and with good rhyme to success

### 人本 (Humanism)

以當責、自主、創造力與關懷、讚美、同理心、正向思維來達成極大化組織效益  
 To achieve the maximization of organizational effectiveness by encourage staff to be responsible, creative.  
 Educate them to be caring, sympathetic. Help them to get positive thinking and praise them.



- 2014** 建立銷售通路，中東、東南亞  
Established distributing system in Middle East and South Asia
- 2012** 建立銷售通路，澳洲、歐洲、南美洲  
Established distributing system in Australia, Europe and South America
- 2010** 國內昇陽建設推廣SI乾式工法(Skeleton Infill)，採用卜大整體浴室  
As domestic Sunty Construction are promoting the dry construction method, Skeleton Infill which is called, PUDA prefabricated bathrooms has been chosen by Sunty Construction.
- 2007** 進軍中東市場外銷杜拜地區  
As an overseas sales performance, Unit Bathrooms were exported to Dubai. Move into the Middle East market.
- 2006** 通過SGS ISO 9001改版品質認證  
Certified by SGS ISO9001 quality certification revision.
- 2002** 營業總部擴展至台中清水廠  
Operational Headquarter and factory were located in Ching Shui Township, Taichung County, Taiwan.
- 2000** 與台灣櫻花公司整體浴室部門進行合併，並增資至1億760萬  
PUDA combined the overall bathroom sector of SAKURA GROUP, and capital was increased to NTD 107.6 million.
- 1999** 開辦國外業務，進軍國際市場，外銷日本、香港等亞洲地區  
The starting of foreign department and got into the international market, exported to Japan, Hong Kong and other Asian regions.
- 1998** 通過CNS整體浴室認證，ISO 9002認證  
PUDA Unit Bathrooms was certified by CNS and ISO 9002.
- 1996** 南區、花東區營業所設立，申請多項專利，特許登錄  
Set up sales branches in southern Taiwan and the east of Taiwan. Applied many patents, Special permission has been registered at the meantime.
- 1995** 設置大甲廠，增資至4000萬  
Established a factory located in Ta Chia Township, Taichung in 1995. Capital was increased to NTD 40 million.
- 1993** 台北區營業所、台中營業所成立  
Established Taipei sales branch office and Taichung sales branch office in 1993.
- 1989** 9月10日卜大強化塑膠有限公司設立，資本額1200萬元  
Established Puda Strengthened Plastic Co., Ltd. with capital 12 million NTD on September 10th, 1989.



## 核心能力

## core ability



### PUDA的專業資產 THE PROFESSIONAL ASSET OF PUDA.

PUDA公司擁有近30年整體浴室 (Unit Bathroom) 的核心製造技術，加上精幹員工與經營團隊，以及最先進輕量化PU嵌面飾材灌注機、樹脂轉注機RTM、CNC水刀切孔機，能滿足量產客製化預組化——底盤、壁板、天花板及冷熱水管與各種配件組成整體浴室UB的需求。

#### PUDA's core strength

PUDA has nearly 30 years of experiences of the core manufacturing technology in manufacturing of unit bathrooms (UB or prefabricated bathrooms). In company with capable staff and management team, plus the most advanced surface decorating material embedded lightweight PU pouring machine, resin transfer injection machine RTM, CNC water knife hole machine. PUDA can meet the customer needs of mass production of customized prefabricated fixtures. For example, floor panels, walls, ceilings, and the needs of combination of hot and cold water pipes and accessories into the whole bathrooms.



### 承製五星級大飯店UB的實力

#### PUDA HAS THE REAL STRENGTH OF PRODUCING FIVE-STAR UB

根據客戶的明確需求，由研發團隊三度空間模擬主體結構，妥善規劃設計UB六面圖、模具圖、生產加工圖與建制BOM使成易拆裝的整體浴室UB，客戶群包括台灣高雄漢來、台南長榮大飯店，近年來朝向國際市場邁進；日本東京凱悅安達仕飯店、日本東京半島酒店、日本六本木凱悅大飯店、日本東京品川王子飯店...都是成功案例客戶群。

According to customers's emand, R&D team use 3D simulation drawing tools to make bathroom structure simulation to design simply assembled prefabricated bathroom, shop drawing, manufacturing drawing of moulds & products and BOM for mass production completed by this tool as well. Our customers included Taiwan 5 star Grand Hai-Lai Hotel, Tainan Evergreen Laurel Hotel. For oversea market, Japan Tokyo Andaz Hotel, Japan Tokyo Pennisula Hotel, Japan Tokyo Grand Hyatt Hotel and Japan Tokyo Shinagawa Prince hotel, all are our successful projects.

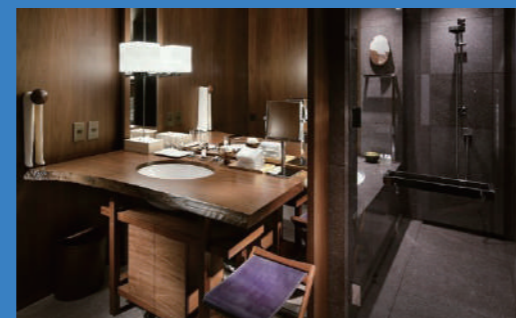


### 生產流程的品質管理保證

#### GUARANTEE OF QUALITY CONTROL ENSURING PRODUCTION PROCESS

公司整體浴室UB從接單、規劃設計、生產出貨、組裝完成，到最後交給客戶的流程，都是經過品質保證，在國際上品質榮獲SGS ISO9001認證，在國內也榮獲CNS合格認證殊榮。

Quality of UB is guaranteed by SGS ISO9001 international quality certification and the CNS qualified certification domestically. Each phase is under control, from orders, planning, design, production and shipment, assembled, and finally to the customers.



### 客製與多樣化UB

#### UNIT BATHROOMS ARE CUSTOMIZED AND DIVERSE

在卜大公司的展示中心裡，有各式各樣用於五星級大飯店、學校宿舍、集合住宅、高級別墅、休閒渡假村及醫院、方便殘障人士與老年人的養老養生院 各種形形色色因用途、地點、使用者需求而設計的整體浴室UB。

There are a wide range of different unit bathrooms in PUDA's display center. They are applied in five-star hotels, schools, dormitories, condominiums, villas, leisure resorts and hospitals, health hospital to facilitate people with disabilities and for older persons etc. Various forms of UB can be found. They are designed for different needs.



### UB效益價值鏈

#### VALUES OF EFFICIENCY OF UB

由於事先依據客戶需求妥為規劃，設計圖面以供製造與組裝的施作藍圖，加上嚴格環環相扣品質管理，使得在4~6小時內能迅速組裝一套整體浴室UB、有別於7~8天施工一套傳統浴室，在品質、成本、效率、利息付出、水電配置、現場管理、環保議題、營運收入等等 的優勢，更是客戶首選。

PUDA plan for customer demand beforehand, design drawings as a blueprint for manufacturing and assembly plus strict quality control. Different from the construction of a tradition bathroom, 7~8 days per unit, it only takes 4 to 6 hours to assemble a prefabricated bathroom. It gives great advantages in quality, cost, efficiency, interest paid, allocation of water and electricity, site management, environmental issues, operating income, etc. Therefore, UB would be the best choice for customers.



### 矢志打造最頂級最佳品牌

#### COMMITTED TO CREATE A TOP BRAND

卜大公司是專業「客製化量產整體浴室」績效卓越的商品專家，本著「頂真、創新、簡單、人本」的經營理念，累積了獨特的研發規劃設計、生產製造、組裝技術、生產管理KNOW-HOW，矢志打造PUDA成為整體浴室UB級的最佳品牌。

PUDA is specialized in customized unit bathroom for mass production. We are experts with excellent performances. Based on the business philosophy of sincerity, innovation, simplicity, and humanity, we have accumulated unique R & D planning and designs, manufacturing, assembly techniques, production management methods. We are determined to build PUDA as the best brand of unit bathrooms.

PUDA的專業資產  
THE PROFESSIONAL ASSET OF PUDA.

承製五星級大飯店UB的實力  
PUDA HAS THE REAL STRENGTH OF PRODUCING FIVE-STAR UB.

生產流程的品質管理保證  
GUARANTEE OF QUALITY CONTROL  
ENSURING PRODUCTION PROCESS

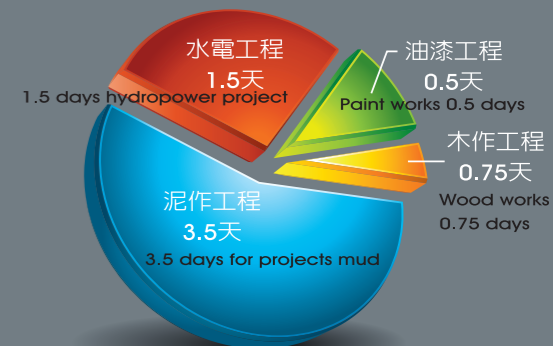
客製與多樣化UB  
UNIT BATHROOMS ARE CUSTOMIZED AND DIVERSE

UB效益價值鏈  
VALUES OF EFFICIENCY OF UB

矢志打造最頂級最佳品牌  
COMMITTED TO CREATE A TOP BRAND



### 工時比較 COMPARISON OF WORKING HOURS



傳統浴室共計7.25天  
A total of 7.25 days of traditional bathroom



只需要  
4-6小時  
Only 4-6 hours

整體浴室共計4-6小時  
Total 4-6 hours the whole bathroom

客製化UB  
CUSTOMIZED UB



### 卜大的四個承諾

#### PUDA'S FOUR PROMISES

##### 承諾一 技術領先

###### 1ST PROMISES- PROMISE TO BE A TECHNOLOGY LEADER

先進組合式整體浴室，充分運用模組化設計，達到建築互助、建築共享、建築合理化的概念

Using advanced composite bathrooms with modular design to reach a concept of achieving mutual help, sharing, and rationalization of building.



##### 承諾二 品質保證

###### 2ND PROMISES- QUALITY ASSURANCE

全國最大自有工廠，產能、品質皆經過認證嚴格

Own the largest factory locally. All production, capacity, and quality are certified strictly.



### 卜大整體浴室，10年防水保固

PUDA prefabricated bathroom provides 10 years leaking-proof warranty.



##### 承諾三 系統安裝

###### 3RD PROMISES- SYSTEM INSTALLATION

專人工程管控，施工進度品質有保障

Hire professionals for engineering control, qualities of construction progress are assured.

##### 承諾四 永續服務

###### 4TH PROMISES- PERMANENT SERVICES

建立產品稽核與問題預防，專業諮詢安全修繕服務

Establish the product problem prevention system and audit system. Provide professional consulting of safety inspection and repair services.



### UB 整體浴室四大價值

### FOUR VALUES OF PUDA UNIT BATHROOMS



機能永續

卜大公司產品充分考量到人體與空間使用行為，不論是在設計或功能研發上致力於防水、防漏、更新易換修、制震、輕量化，貼近【使用者】，注重功能性與環境結合，最終融入個性、自然和諧、人性關懷的衛浴空間為目標。

Take full consideration towards the usage of space between the product and the human body. Whether in design or function, our R & D is committed to make it waterproof, zero leakage, replaceable, shockproof and light. We care for users, focus on combining functionality with the environment and eventually injecting the personality, natural harmony and human caring bathrooms. These are our final goals.



住宅永續

整體浴室發揮綠建築認可科技環保建材的特性，以更高的品質與更好的性能實現傳統浴室的功能、滿足住戶的基本居住需要外，其主要功能優勢在於實現耐久性；並將居住、使用、管理、維護，統一起來，提高住宅環境品質，貼近使用者的風格品味和生活情趣。

To elaborate the features of recognized green building and technical and eco-friendly materials. Besides higher quality and better performance of the functions of traditional bathroom to meet the basic needs of households, its main mission is to carry out the durability of bathrooms. And it is a combination of living, usage, management, maintenance. PUDA Unit Bathrooms enhance the quality of residential environment, close to the user's taste and brought delight of life.



生態永續

卜大公司整合內牆、磁磚、衛浴設備、水電工程，達到製造-裝修-施工一體化政策與目標，由於工廠生產系統組合簡易安裝、結構體輕量化，廢棄物、二氧化碳自然減少，充分展現出對於建築自動化與自然環境互依互存的理念與價值

PUDA integrate internal walls, tiles, sanitary equipment and plumbing to accomplish the integration of manufacturing, decoration, and construction. As the combination of easy installation of the factory production systems. With above characters and lightweight structures, the waste and carbon dioxide are reduced. The value of building automation and the interdependence between architecture and the nature environment has been fully unfolded.



服務永續

卜大公司與顧客之間就像家人一樣，透過卓越與完善的服務體系，是我們與顧客聯繫互動一個非常重要的管道，我們相信：站在顧客立場出發了解並感同深受顧客的心情，與顧客保持永久性的信賴關係絕對是首要目標。因為：整體浴室的驕傲，唯有卜大

PUDA and its' customers are like family. Through excellence and perfect service system, we build a very important channel. By which we communicate and interact with our customers. We believe our first priorities are absolutely to understand customer needs and keep being trustworthy permanently. Because there is only PUDA would give you the pride in unit bathrooms.





## 綠建築認可

RECOGNIZED GREEN BUILDING



### 建築產業改良對策

#### USE RECOGNIZED GREEN BUILDING AND STRATEGIES OF CONSTRUCTION INDUSTRY FOR IMPROVEMENT

在建築工程逐漸趨向高層化、大型化、個性化的情形之下，營建的管理與工種的配合顯得更為重要；而傳統工法卻因為工資高漲、優良技工缺失、施工期長、施作品質不穩定，造成效率低落和極大的金錢與寶貴時間的損失及浪費。卜大整體浴室（PUDA Unit Bathroom）簡化了工程時間和工種的種類，讓營建產業趨向自動化；建築生產更加合理化，充分滿足現代營建的需求。

卜大（PUDA）整體浴室的系統性規劃工法，其關鍵在於預鑄式生產使營建工業可以提升效率、提高品質、降低人工成本、減少廢棄物，整體浴室不僅造型美觀大方、衛生易清潔；且具有100%防漏水、制震、施工簡易快速、易維修的產品特性，是有別於傳統浴室的革命性產品。

In the trends that construction businesses are gradually moving towards skyscrapers, large-scale and personalized buildings, construction management and cooperation between different jobs are becoming more important. While greatly money and valuable time are wasted by rising wages, lack of good mechanics, construction redundancy and unstable qualities, PUDA Unit Bathroom has shortened the construction time limit and has simplified the jobs. To automate and rationalize production of construction has become a new trend to fully meet the needs of modern construction.

The key benefits of systematic planning of PUDA Unit Bathrooms are increasing efficiency and quality, lower labor cost and waste reduced. By using prefabricated production, these benefits have become achievable. The unit bathrooms not only are beautiful, elegant, healthy and easy to clean, but also 100% waterproof, shockproof, installation quick and easy, and easy maintenance. These characters are different from traditional bathrooms. PUDA Unit Bathrooms are revolutionary.

## SI 工法的標準設備

The standard equipment standard of SI method.



尺寸Size : 1600 x 2000 x 2120 (mm)  
日本青森弘前飯店  
Hotel Aomori Hirosaki in Japan.

格 | 調 Stylish



尺寸Size : 2000 x 2400 x 2433.5 (mm)  
東京南麻布3丁目豪宅  
Luxurg Palace in Tokyo, Japan.

機 | 能 Functional



尺寸Size : 1600 x 4000 x 2123 (mm)  
日本溫泉會館  
Japan Hot Spring Resort.

價 | 值 Valuable



尺寸Size : 2643.5 x 2937 x 2635 (mm)  
日本東京浜璃宮豪宅  
Luxury Palace in Tokyo, Japan.



尺寸Size : 1400 x 1800 x 2165 (mm)  
東京赤坂3丁目飯店  
AKASAKA GRANBELL HOTEL.



尺寸Size : 1600 x 2000 x 2468 (mm)  
日本東京浜璃宮豪宅  
Luxury Palace in Tokyo, Japan.



# 業績實例

實績持續增加 20案件 / 年以上  
over 20 successful projects per year



鳳山眷村公寓住宅改建  
Apartments reconstruction for in Fengshan military community, Kaohsiung Taiwan.



昇陽麗石公寓住宅  
Beauty Stone apartments project for Sunty Construction Company.



林新醫院  
Lin Sin hospital.



台中中國醫藥院附設醫院-五權分院  
Wu Chuan branch of China Medical University Hospital.



東京新宿WestBest飯店  
Best Western Shinjuku ASTINA Hotel Tokyo



那霸市新都俱樂部飯店  
Hotel Hokke Club Naha Shintoshin.



東京赤坂飯店  
The Akasaka Excel Hotel in Tokyo, Japan.



彰化彰濱秀傳醫院  
Chang Bing Show Chwan Memorial Hospital.



彰化基督教醫院-鹿東分院  
Changhua Christian Hospital - Deer East Branch



淡水馬偕醫院  
Mackay Hospital in Tamsui Taipei Taiwan.



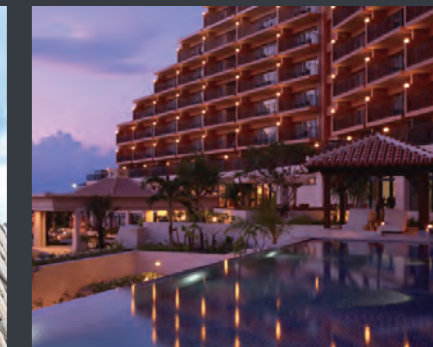
高雄醫學院附設醫院  
Kaohsiung Medical University Chung-Ho Memorial Hospital.



東京品川王子飯店  
The Shinagawa Prince Hotel in Tokyo, Japan.



東京半島酒店  
The Peninsula Tokyo, Japan.



琉球恩納村飯店  
Kafuu Resort Fuchaku Condo Hotel Okinawa, Japan.



東京凱悅安達仕飯店  
Japan Hyatt Anzda Hotel



嘉義長庚醫院綜合醫學大樓  
Comprehensive Medical Building of Chang Gung Memorial Hospital located in Chia I city Taiwan.



高雄漢來飯店  
Grand Hi-Lai Hotel. The best hotel in Kaohsiung, Taiwan.



高雄漢來飯店  
Grand Hi-Lai Hotel. The best hotel in Kaohsiung, Taiwan.



広島オリエンタルホテル  
The Oriental Hotel in Hiroshima, Japan.



六本木凱悅飯店  
The Hyatt Hotel in Roppongi Tokyo, Japan.

Performance examples

Top 10 most concerned problems brought up by households.

## 住家最頭疼的 10大問題排名

排名 RANK	項目 ITEM	百分比% Percentage%
1	壁癌 Moldy walls	28.6
2	漏水 Leakage	26.3
3	牆壁剝落 / 明顯裂痕 Wall spalling / cracking	26.0
4	排水管不通 Drain barrier	24.7
5	水管老舊 Old plumbing	20.4
6	電線老舊 Wire old	17.4
7	蟲害 Pests	14.8
8	天花板剝落 / 明顯裂痕 Ceiling spalling / cracking	14.5
9	廁所老舊 Toilet old	14.5
10	地磚爆裂 Slabs burst / cracking	13.5

資料來源：信義房屋

## 使用卜大整體浴室 十大解決對策

Ten solutions,  
using PUDA unit bathrooms



- 設計 Design**  
 空間設計依據人體工學及人因尺寸，具設計美感及合理性  
 based on ergonomics and anthropometry (Anthropometric Characteristics), with a design aesthetic and rational.
- 防水 Waterproof**  
 地板採用FRP材質與面飾材一體成型，充分達到防水、防滲漏，不會有地磚剝落問題  
 Floor surface using FRP (Fiberglass Reinforced Plastics) materials and decoration materials, forming one, fully meet the water, seepage, and no tiles falling off problem
- 衛生 Sanitation**  
 磁磚縫及死角不易積污垢，延長建物使用壽命，增加使用週轉率  
 Sanitation- It is not easy to gather dirt in side the seam between tiles. This will extend the life of bathrooms and make it reusable.
- 排水 Drain**  
 地板特殊集水盤設計，地面洩水坡度延展性佳，用水徹底排放，確保浴室地面乾燥、安全、舒適  
 Special watershed design floor panel, good slope ductility, hence the water can be totally discharged to ensure that the bathroom floor dry, safe, and comfortable.
- 漏水 Leakage**  
 給水管路經過15kg / cm<sup>2</sup>嚴格空壓漏水測試，排水管經過事先的規劃，減少界面點與漏水的產生  
 Water supply pipe through 15kg / cm<sup>2</sup> critical compressed air leakage test, drains through advance planning, reduce the leakage and the interface defects.
- 壁板材質 Wall materials**  
 硬質發泡PU與各種面飾材一體成型，獨立結構設計，徹底終結面飾材剝落、裂痕、壁癌，並具有防水流向壁後效果  
 Rigid PU with a variety of surface decorating material forming one, independent structural design, a complete end to surface decorating material falling off, cracks, moldy walls, and prevention of water infiltration.
- 配管 Piping**  
 設計檢修口採明式配管及壁外配管，日後維修容易，防震、快速維修  
 Use the Ming style piping and behind the wall piping associate the inspection hole, make it easy to maintain, shockproof, quickly repair.
- 天花板 Ceiling**  
 FRP材質防水特性，加上工廠預製，尺寸、品質嚴格控制，不因施工問題產生剝落、裂痕等問題  
 FRP waterproof material, together with prefabrication in the factory. Strictly control the size and quality. It would not have problems such as spalling, cracks caused by construction.
- 維修 Efficient Maintenance**  
 內部配件(如瓷磚、五金、管路)拆卸換裝維修容易，縮短換修、更新時間  
 Accessories such as porcelains, hardware and pipes are easy to remove and replace. This will save a lot time for maintenance.
- 服務 Service**  
 維護保修，終身服務  
 We provide maintenance and repair plus lifetime service.